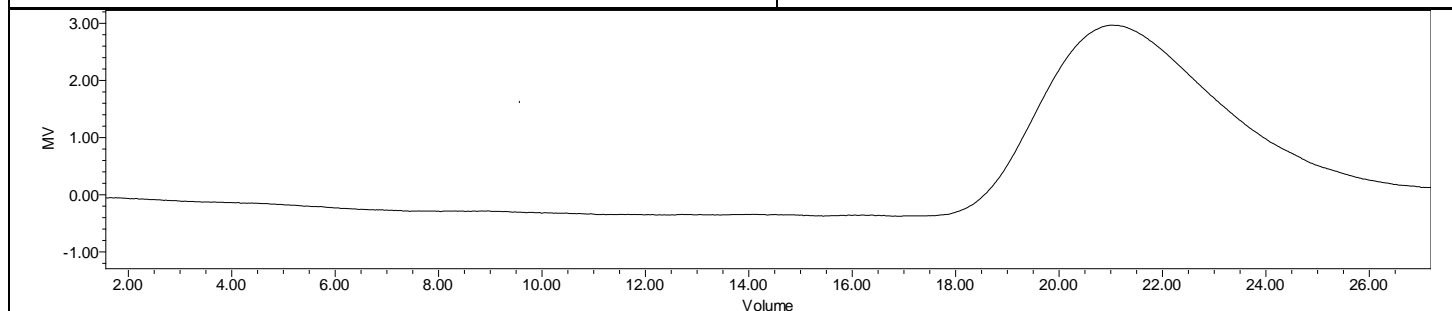
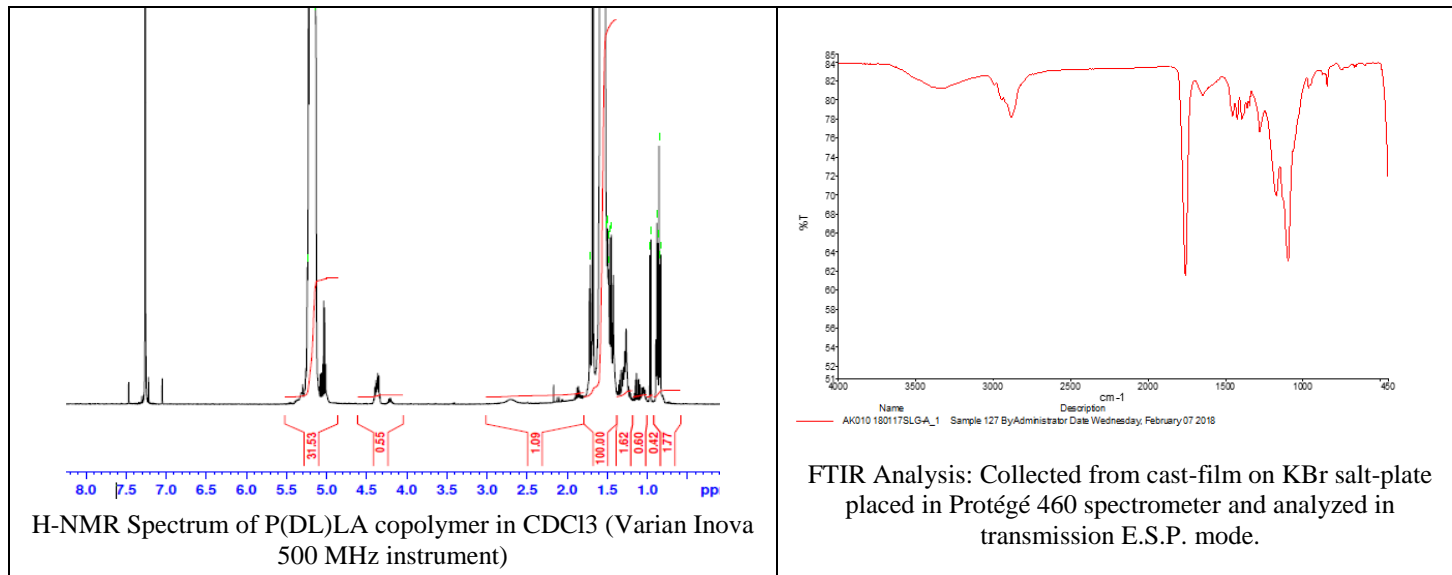


# No. AP231

# Certificate of Analysis



Product Name: Poly(DL-lactide) acid endcap ( $M_n$ : 5,000-10,000 Da)  
(Lot#: 180122JSG-A)



GPC Analysis Method: Waters Breeze 2 system with 1 ml/min THF flow across three GPC columns. Detection via refractive index, calibrated against polystyrene standards.

Polymer	$M_n$ (from GPC)	$M_w$ (from GPC)	PDI
P(DL)LA	7,691	13,057	1.69

- Structure of P(D)LA polymer**

