

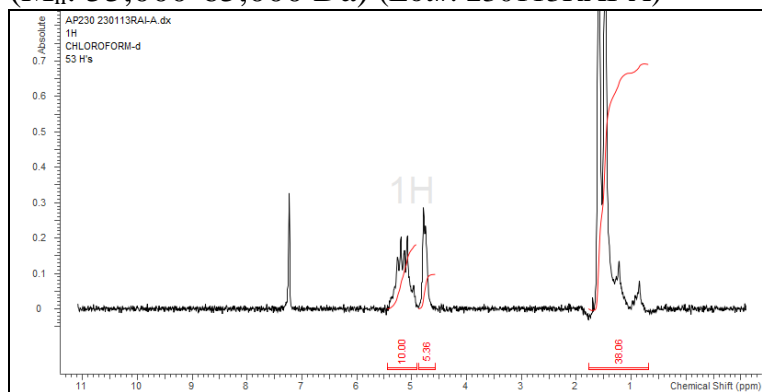
No. AP230

Certificate of Analysis

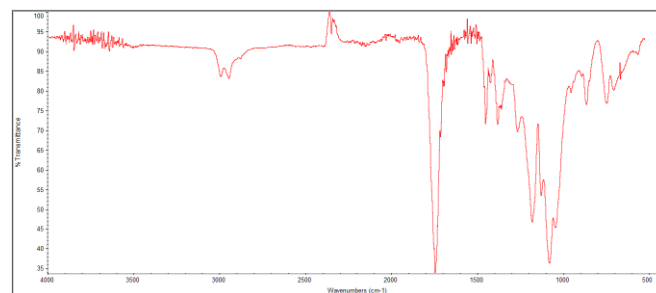


Product Name: Poly(lactide-co-glycolide) acid endcapped (75:25 LA:GA)

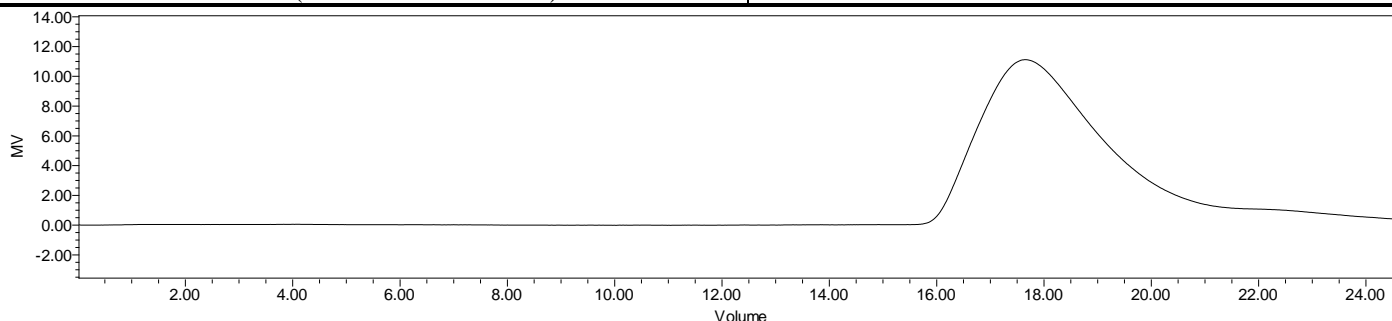
(M_n: 55,000-65,000 Da) (Lot#: 230113RAI-A)



H-NMR Spectrum of copolymers in CDCl₃ (NMReady-60e, Nanalysis 60 MHz) NMR of PLGA Copolymer: LA:GA 79%:21% molar ratio (LA:GA 82%:18% w-w)



FTIR Analysis: Collected from Nicolet Avatar 380 spectrometer with ATR Smart Orbit and analyzed in transmission mode.



GPC-ES Analysis Method: Waters Breeze 2 system with 1 ml/min THF flow across three GPC columns. Detection via refractive index, calibrated against polystyrene standards.

| Polymer | M _n (from GPC) | M _w (from GPC) | PDI |
|---------|---------------------------|---------------------------|------|
| PLGA | 62,941 | 114,773 | 1.82 |

- Structure of PLGA copolymers

