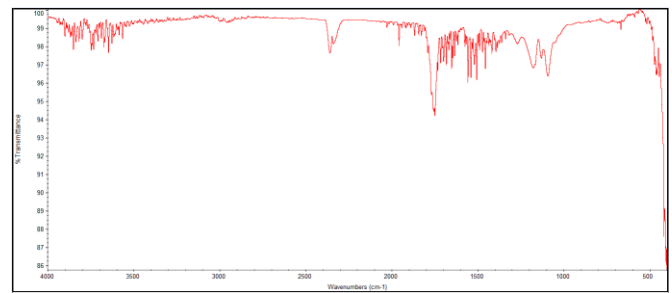
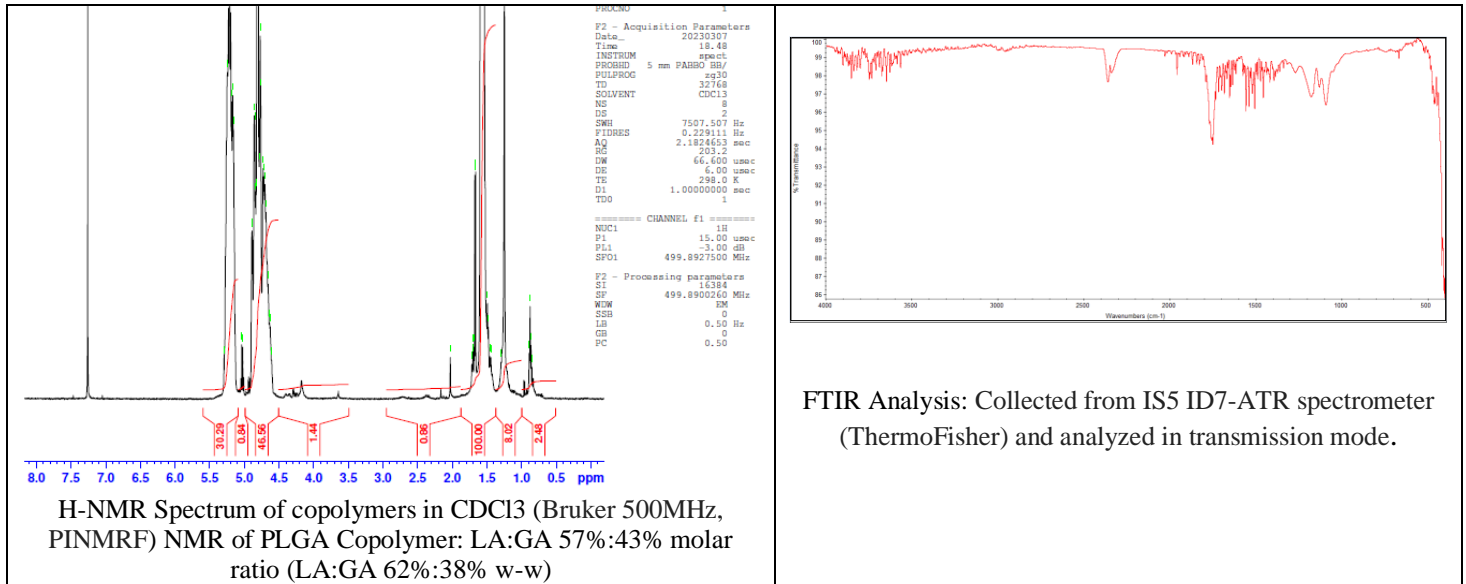


No. AP227

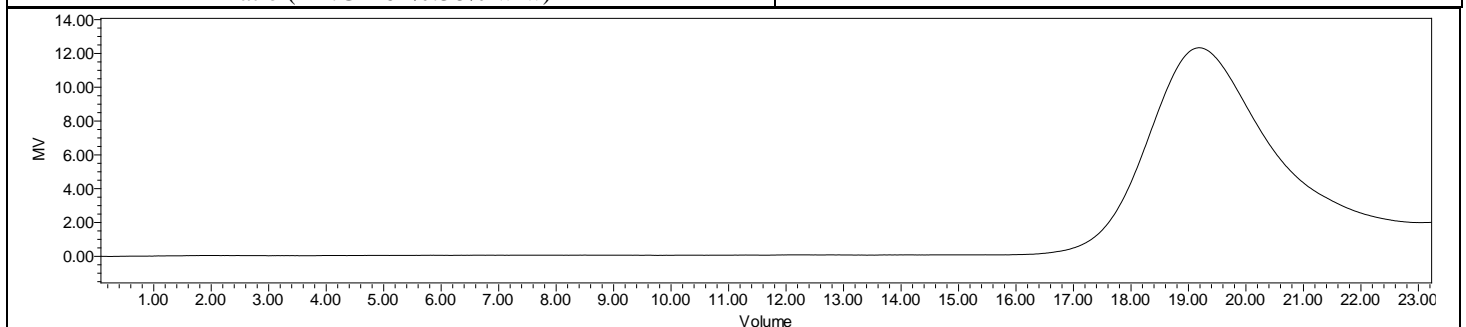
Certificate of Analysis



Product Name: Poly(lactide-co-glycolide) 4-arm pentaerythritol initiated
(55:45 LA:GA, Mn 40,000 – 60,000 Da) (Lot# 230223RAI-A)



FTIR Analysis: Collected from IS5 ID7-ATR spectrometer (ThermoFisher) and analyzed in transmission mode.



GPC-ES Analysis Method: Waters Breeze 2 system with 1 ml/min THF flow across three GPC columns. Detection via refractive index, calibrated against polystyrene standards.

Polymer	M _n (from GPC)	M _w (from GPC)	PDI
PLGA	40,709	49,233	1.21

Structure of PLGA-4ARM-PAE copolymers

