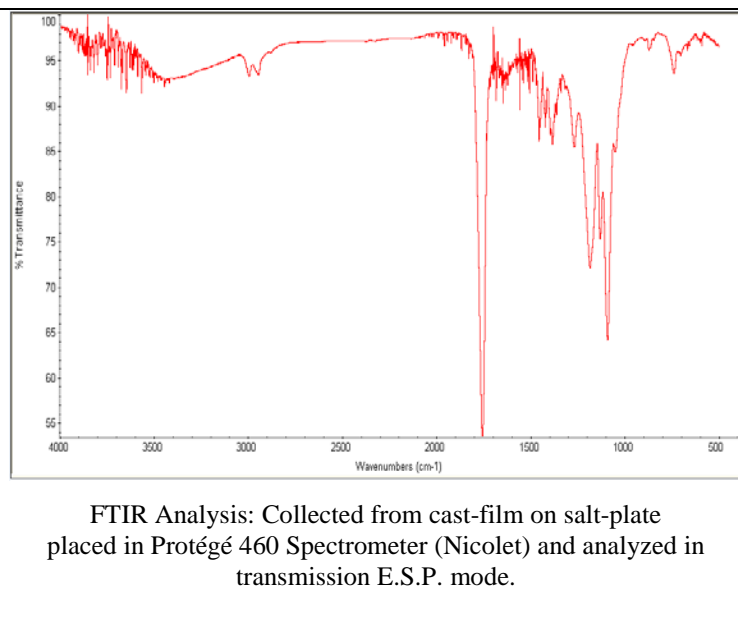
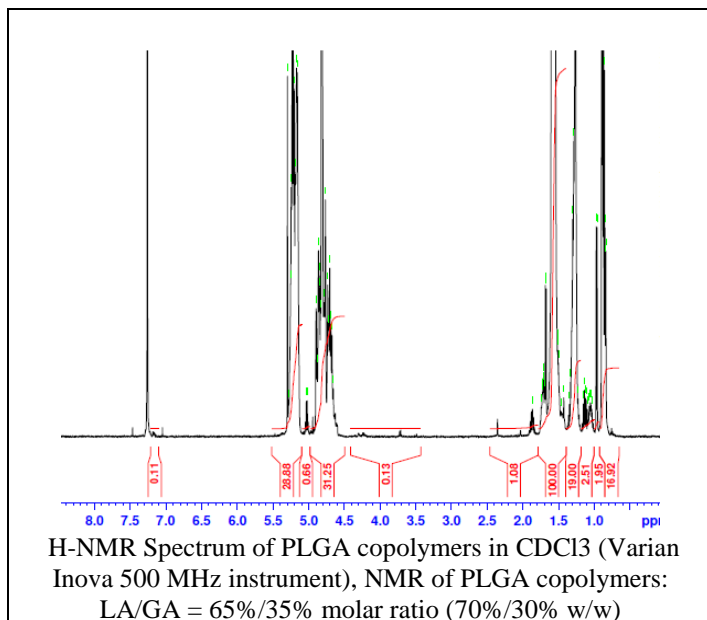


No. AP220

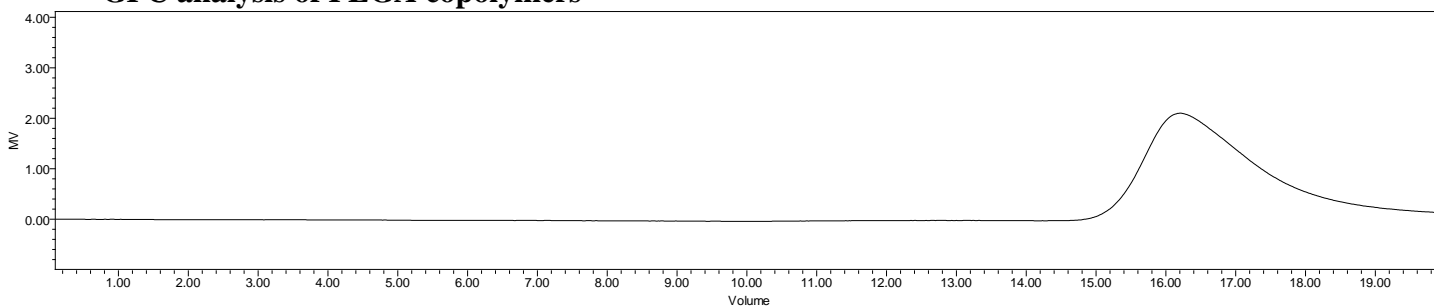
Certificate of Analysis



Product Name: Poly(lactide-co-glycolide) acid endcap (65:35 LA:GA, Mn: 55,000 – 65,000 Da) (Lot#: 170804SMS-B)



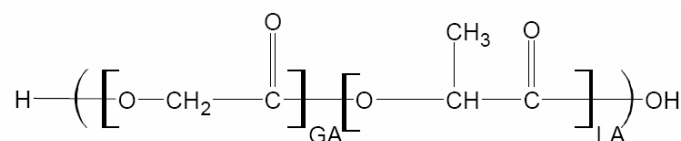
• GPC analysis of PLGA copolymers



Analysis Method: Waters Breeze 2 system with 1 ml/min THF flow across three GPC columns. Detection via refractive index, calibrated against polystyrene standards.

Polymer	Mn (from GPC)	Mw (from GPC)	PDI
PLGA	56,167	93,068	1.66

• Structure of PLGA copolymers



Material provided for research use only. Not for human use.