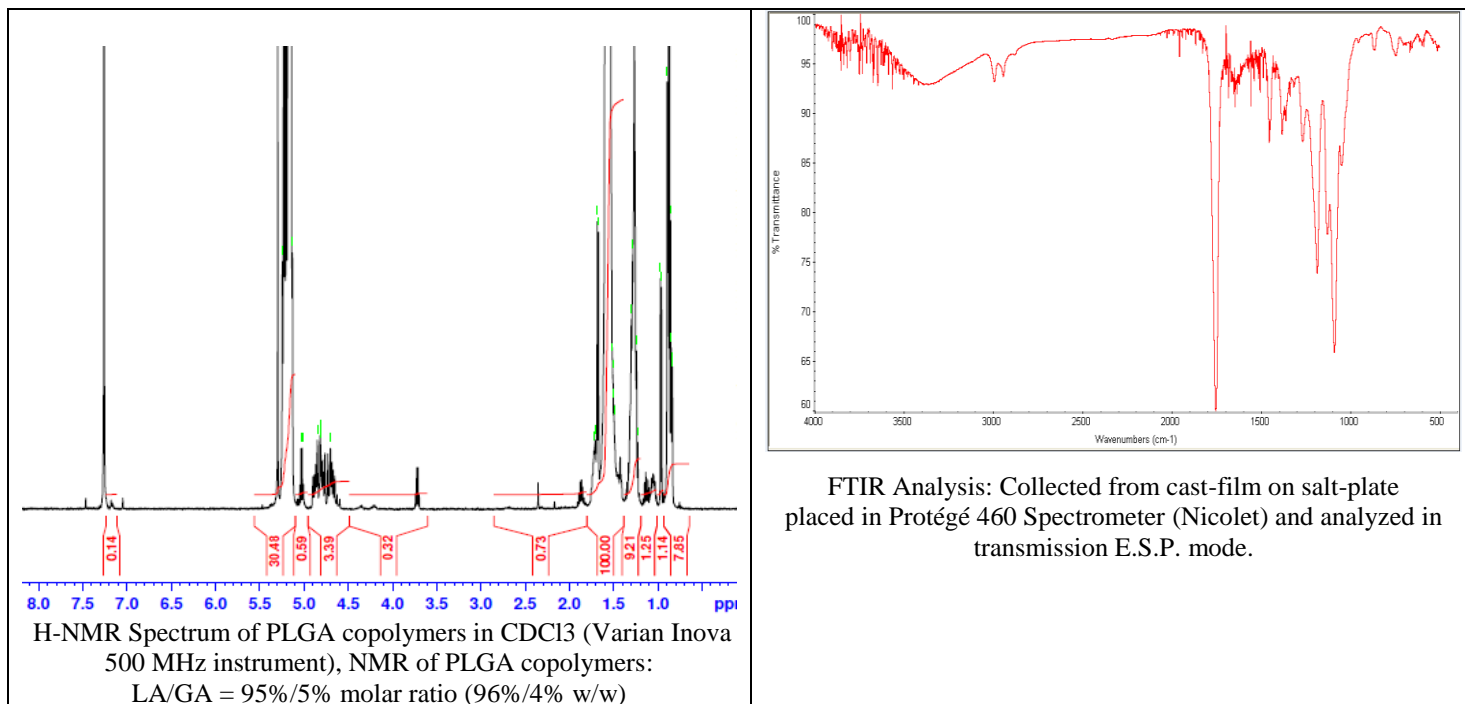


No. AP218

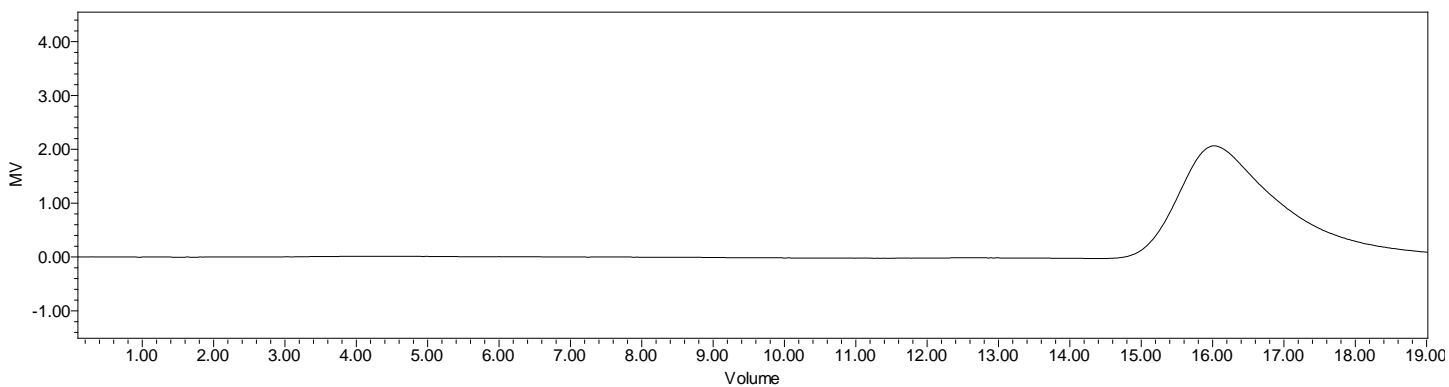
Certificate of Analysis



Product Name: Poly(lactide-co-glycolide) acid endcap (95:5 LA:GA, Mn: 75,000 – 85,000 Da)
(Lot#: 170816SMS-B)



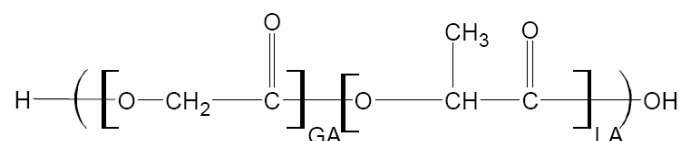
• GPC analysis of PLGA copolymers



Analysis Method: Waters Breeze 2 system with 1 ml/min THF flow across three GPC columns. Detection via refractive index, calibrated against polystyrene standards.

Polymer	Mn (from GPC)	Mw (from GPC)	PDI
PLGA	79,574	120,951	1.52

• Structure of PLGA copolymers



Material provided for research use only. Not for human use.

PolySciTech Division of Akina, Inc. | 3495 Kent Avenue, West Lafayette, IN 47906

765-464-0390 | www.polysciotech.com

For research use only.