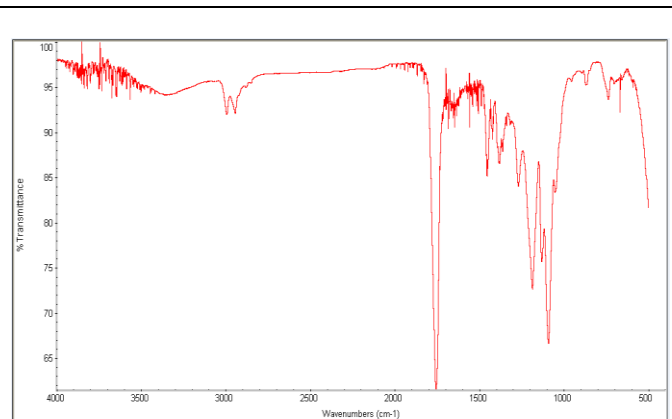
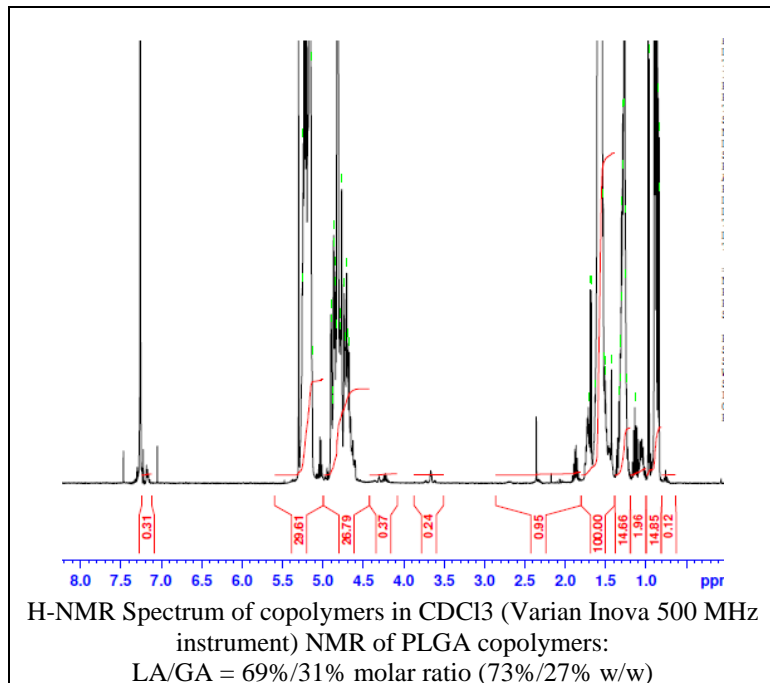


# No. AP215

# Certificate of Analysis

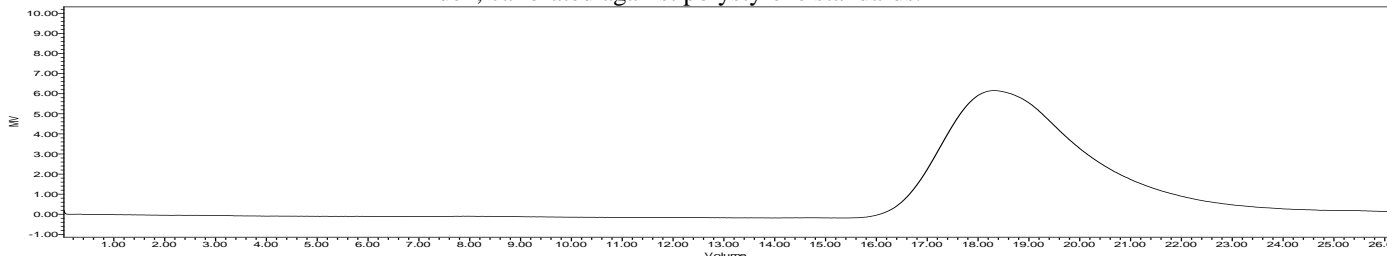


Product Name: Poly(lactide-co-glycolide) LG 70:30 acid endcap  
(M<sub>n</sub> 35,000 - 45,000 Da) (Lot #171115SJH-A)



FTIR Analysis: Collected from cast-film on KBr salt-plate placed in Protégé 460 spectrometer and analyzed in transmission E.S.P. mode.

GPC Analysis Method: Waters Breeze 2 system with 1 ml/min THF flow across three GPC columns. Detection via refractive index, calibrated against polystyrene standards.



| Polymer | M <sub>n</sub> (from GPC) | M <sub>w</sub> (from GPC) | PDI  |
|---------|---------------------------|---------------------------|------|
| PLGA    | 37,509                    | 56,762                    | 1.51 |

- Structure of PLGA polymer**

