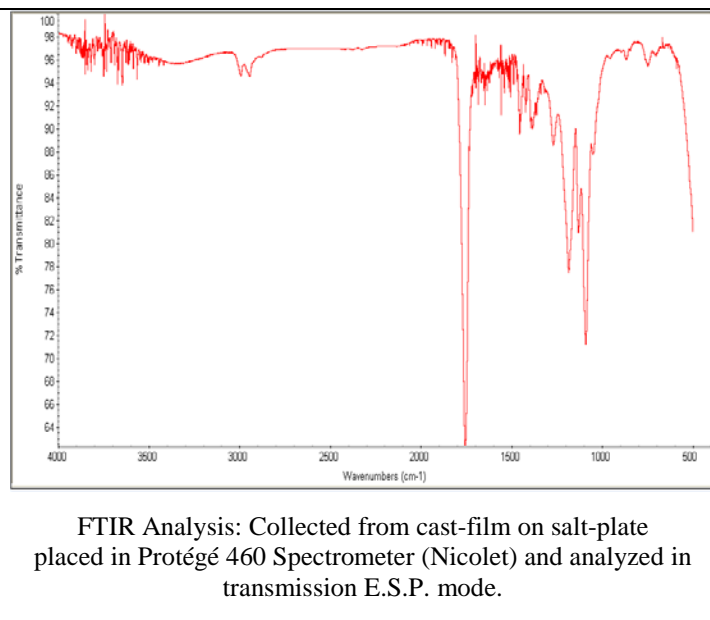
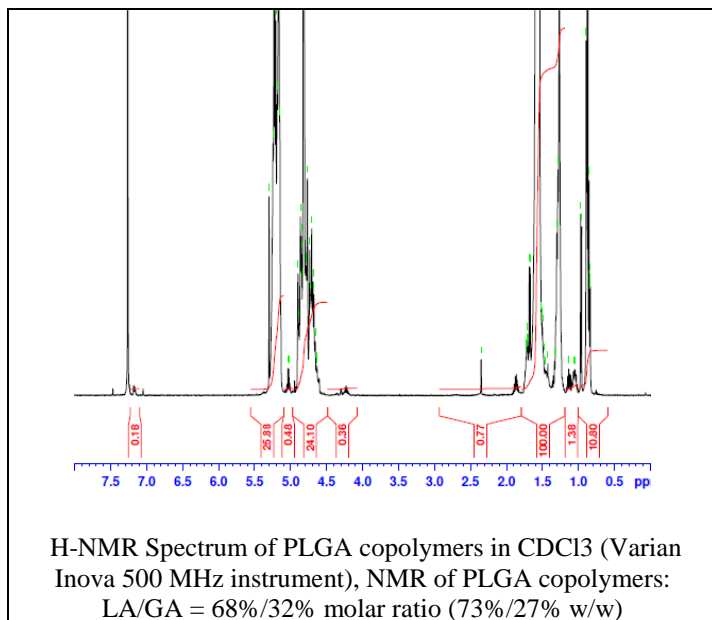


# No. AP215

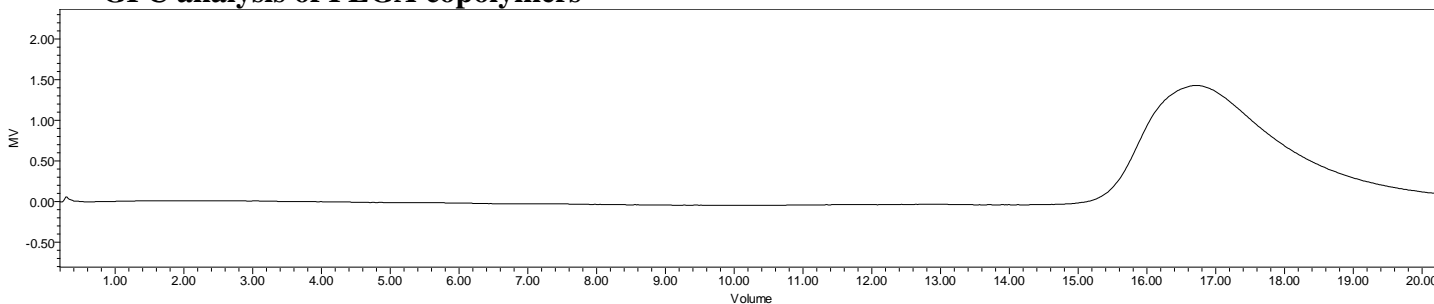
# Certificate of Analysis



Product Name: Poly(lactide-co-glycolide) acid endcap (70:30 LA:GA, Mn: 35,000 – 45,000 Da) (Lot#: 170810SMS-A)



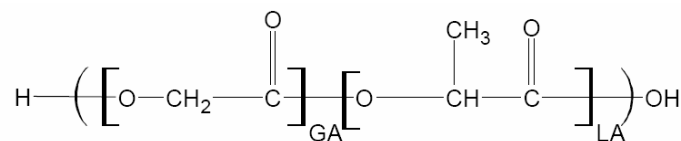
## • GPC analysis of PLGA copolymers



Analysis Method: Waters Breeze 2 system with 1 ml/min THF flow across three GPC columns. Detection via refractive index, calibrated against polystyrene standards.

Polymer	Mn (from GPC)	Mw (from GPC)	PDI
PLGA	42,316	66,209	1.56

## • Structure of PLGA copolymers



Material provided for research use only. Not for human use.