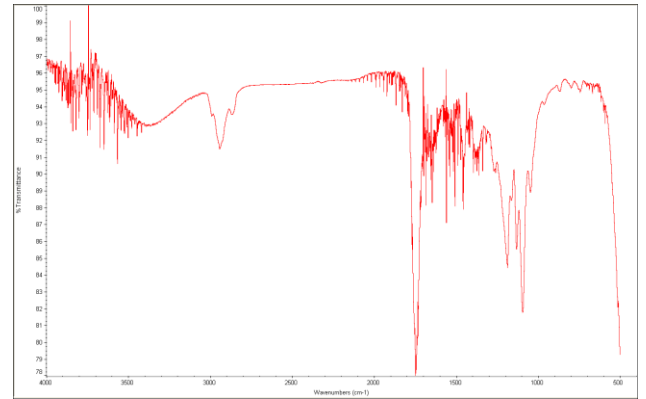
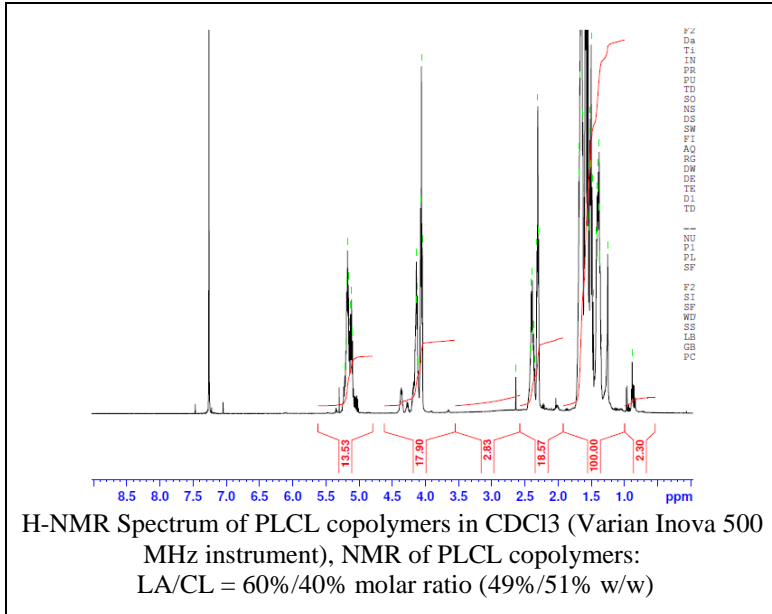


No. AP213

Certificate of Analysis

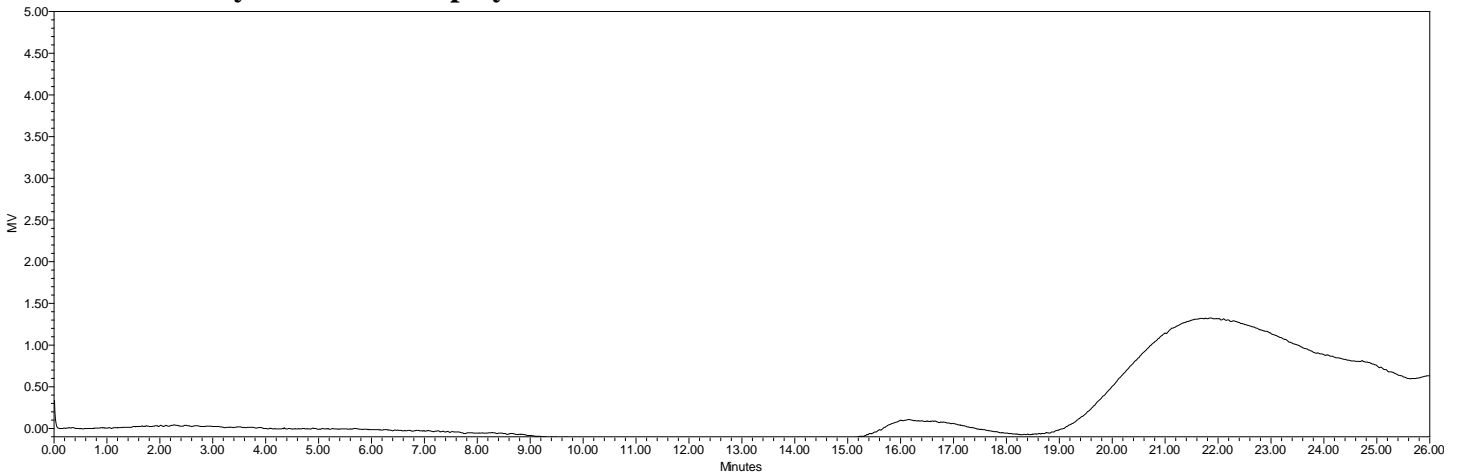


Product Name: Poly(DL-lactide-co-caprolactone) copolymers acid endcap (60:40 LA:CL, M_n : 1,000-5,000 Da) (Lot#: 170516NAE-A)



FTIR Analysis: Collected from cast-film on salt-plate placed in Protégé 460 Spectrometer (Nicolet) and analyzed in transmission E.S.P. mode.

• GPC analysis of PLCL copolymers



GPC Analysis Method: Breeze-2 system with 1 ml/min THF flow across three GPC columns. Detection via refractive index, calibrated against polystyrene standards.

Polymer	M_n (from GPC)	M_w (from GPC)	PDI
P(DL)LCL	2140	2999	1.401

• Structure of P(DL)LCL copolymers

