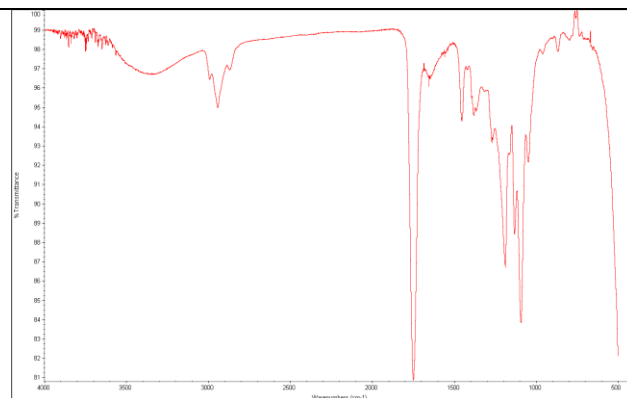
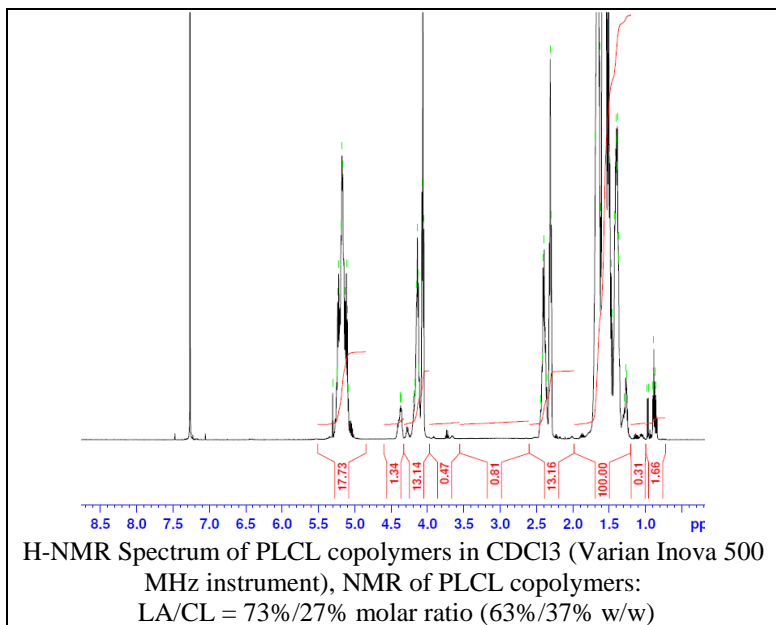


No. AP212

Certificate of Analysis

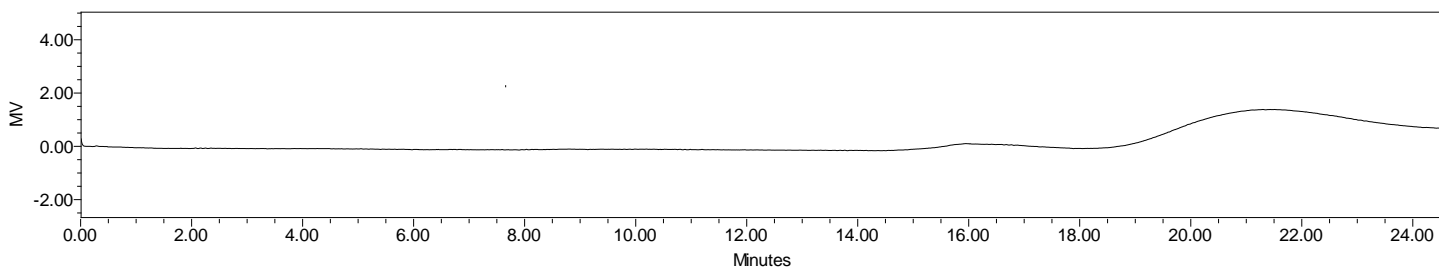


Product Name: Poly(DL-lactide-co-caprolactone) copolymers acid endcap (70:30 LA:CL,
M_n: 1,000-5,000 Da) (Lot#: 170426AMS-A)



FTIR Analysis: Collected from cast-film on salt-plate placed in Protégé 460 Spectrometer (Nicolet) and analyzed in transmission E.S.P. mode.

• GPC analysis of PLCL copolymers



GPC Analysis Method: Waters Breeze-2 system with 1 ml/min THF flow across three GPC columns. Detection via refractive index, calibrated against polystyrene standards.

Polymer	M _n (from GPC)	M _w (from GPC)	PDI
P(DL)LCL	4448	6485	1.458

• Structure of P(DL)LCL copolymers

