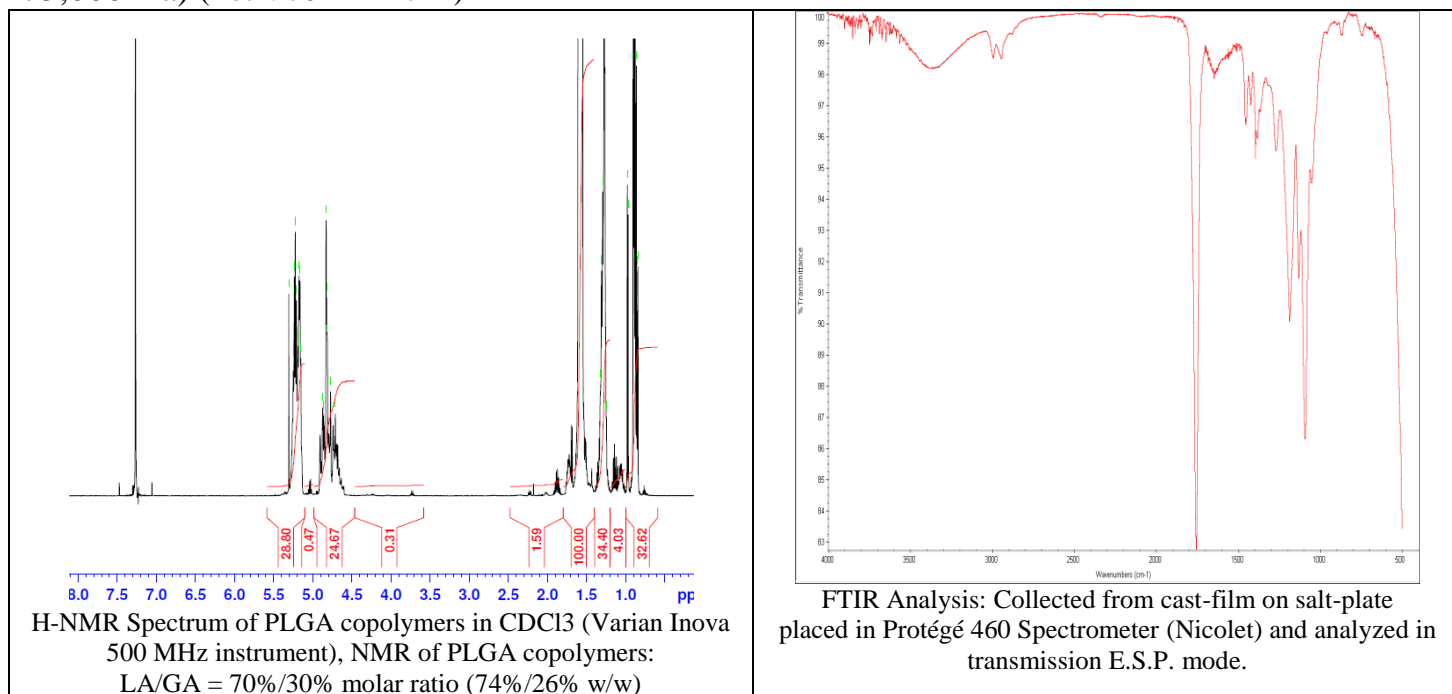


No. AP211

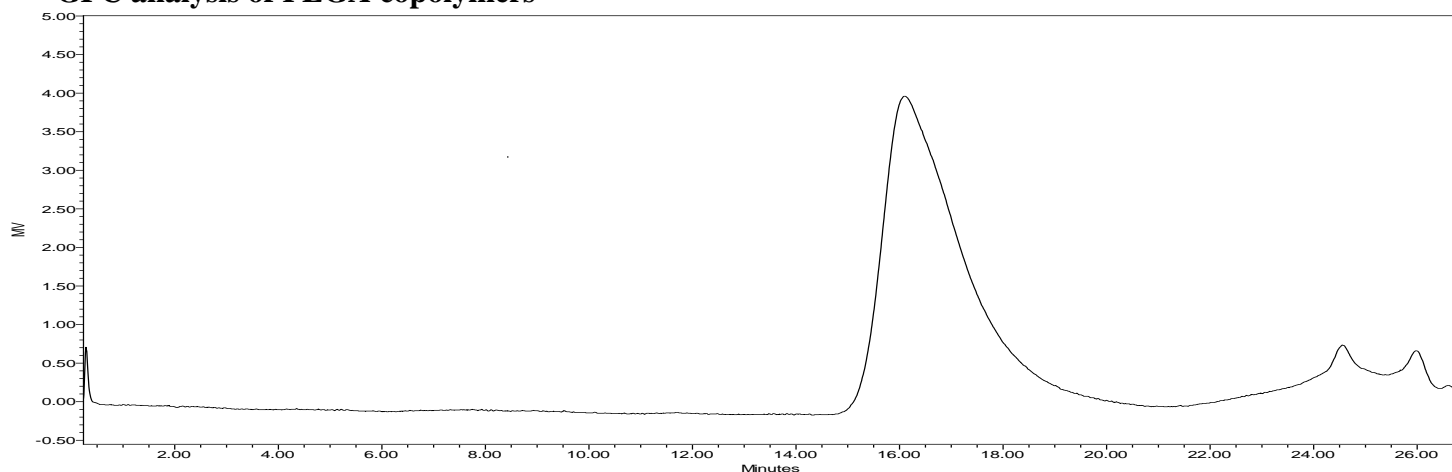
Certificate of Analysis



Product Name: Poly(lactide-co-glycolide) copolymers ester endcap (75:25 LA:GA, M_n : 65,000 -75,000 Da) (Lot#: 70222FAJ-A)

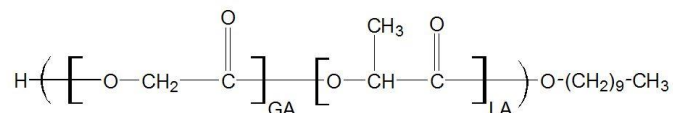


• GPC analysis of PLGA copolymers



Polymer	Mn (from GPC)	Mw (from GPC)	PDI
PLGA	71,830	104,592	1.46

• Structure of PLGA copolymers



Material provide for research use only. Not for human use.