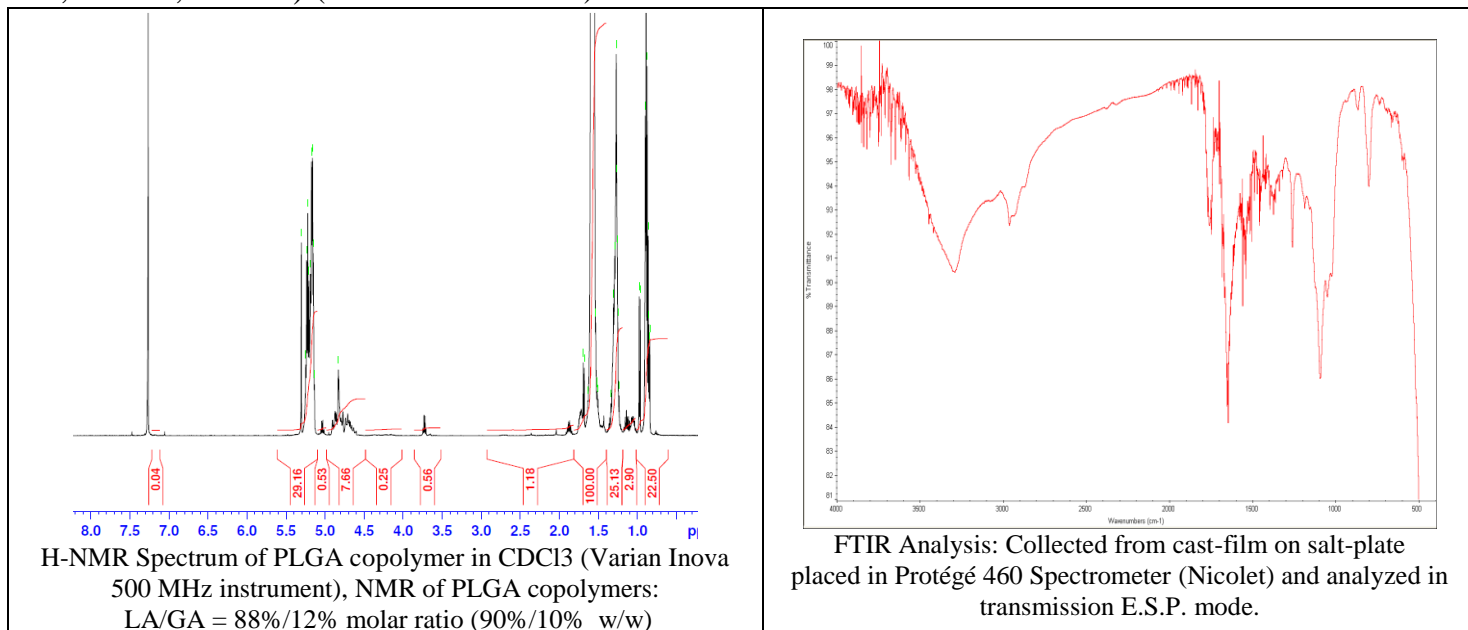


No. AP210

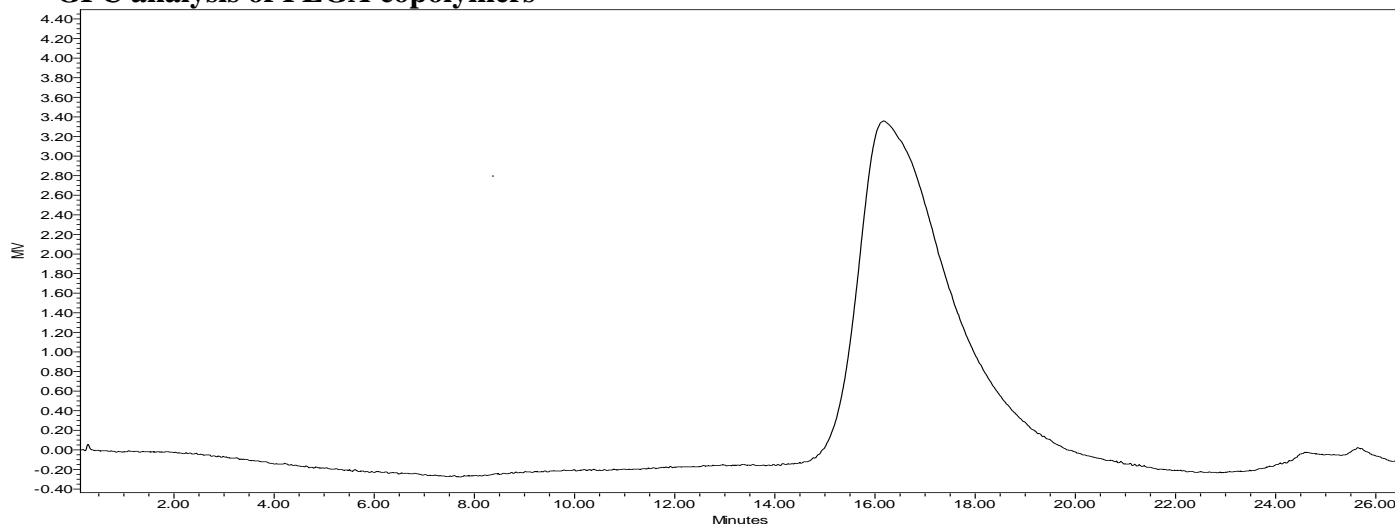
Certificate of Analysis



Product Name: Poly(lactide-co-glycolide) copolymers ester endcapped (90:10 LA:GA, Mn: 55,000-65,000 Da) (Lot#: 70412AMS-B)



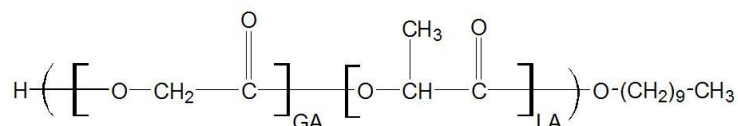
• GPC analysis of PLGA copolymers



GPC Analysis Method: Waters Breeze 2 system with 1 ml/min THF flow across three GPC columns. Detection via refractive index, calibrated against polystyrene standards.

| Polymer | Mn (from GPC) | Mw (from GPC) | PDI |
|---------|---------------|---------------|------|
| PLGA | 56,126 | 95,140 | 1.70 |

• Structure of PLGA copolymers



Material provided for research use only. Not for human use.

PolySciTech Division of Akina, Inc. | 3495 Kent Avenue, West Lafayette, IN 47906
765-464-0390 | www.polysciotech.com

For research use only.