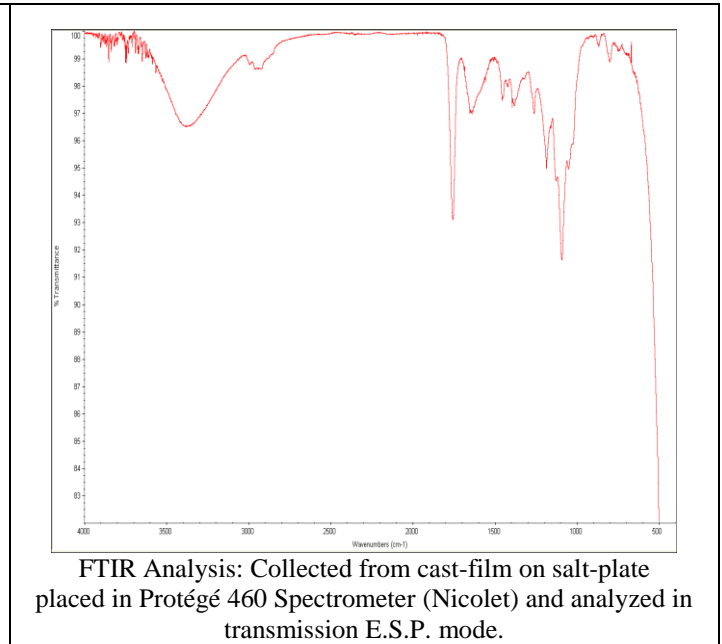
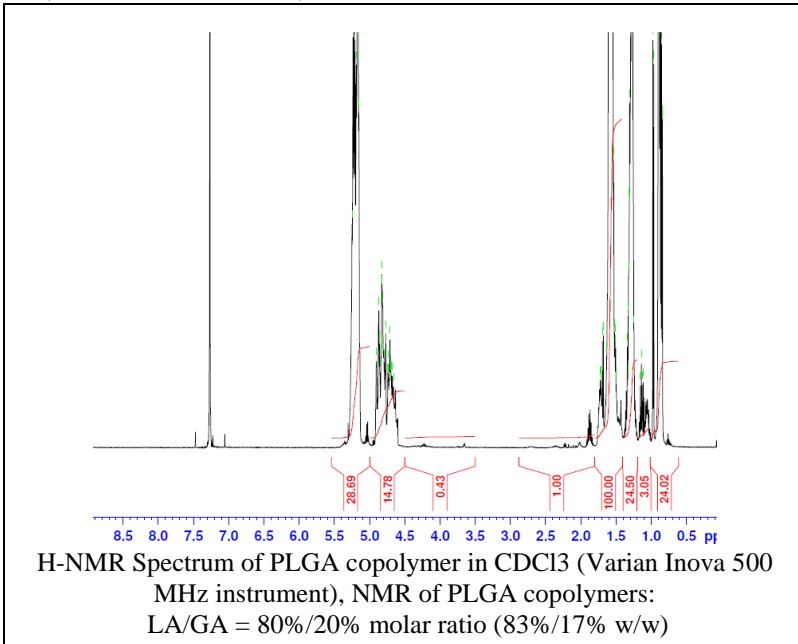


No. AP207

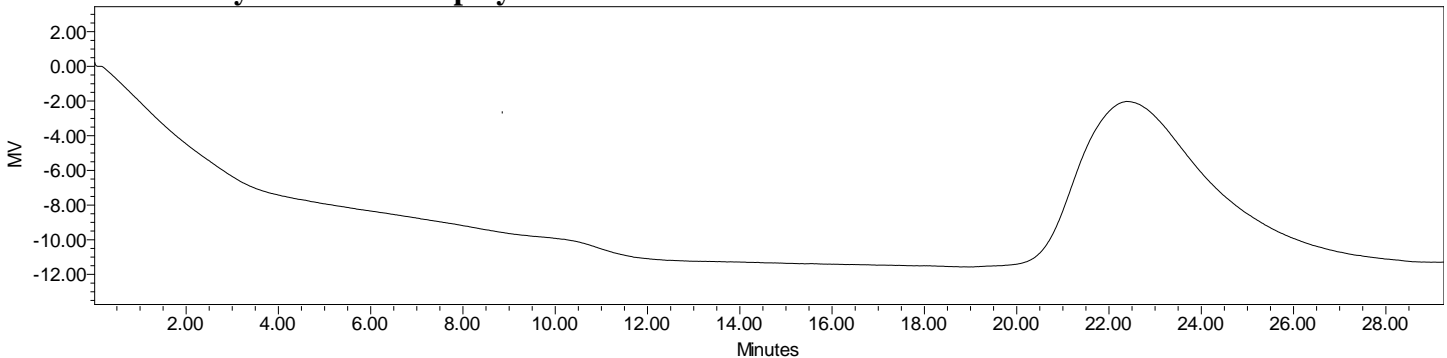
Certificate of Analysis



Product Name: Poly(lactide-co-glycolide) ester endcap (LA:GA 80:20, Mn 45,000 – 55,000 Da)
(Lot#: 70303STR-B)



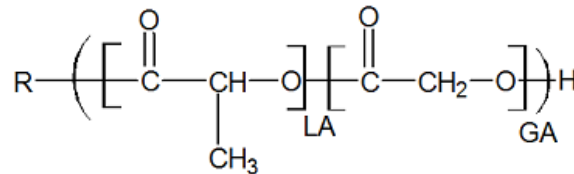
- **GPC analysis of PLGA copolymers**



Analysis Method: Waters Breeze 2 system with 1 ml/min THF flow across four GPC columns. Detection via refractive index, calibrated against polystyrene standards.

Polymer	M _n (from GPC)	M _w (from GPC)	PDI
PLGA	49,591	73,202	1.48

- **Structure of PLGA copolymers**



Material provided for research use only. Not for human use.