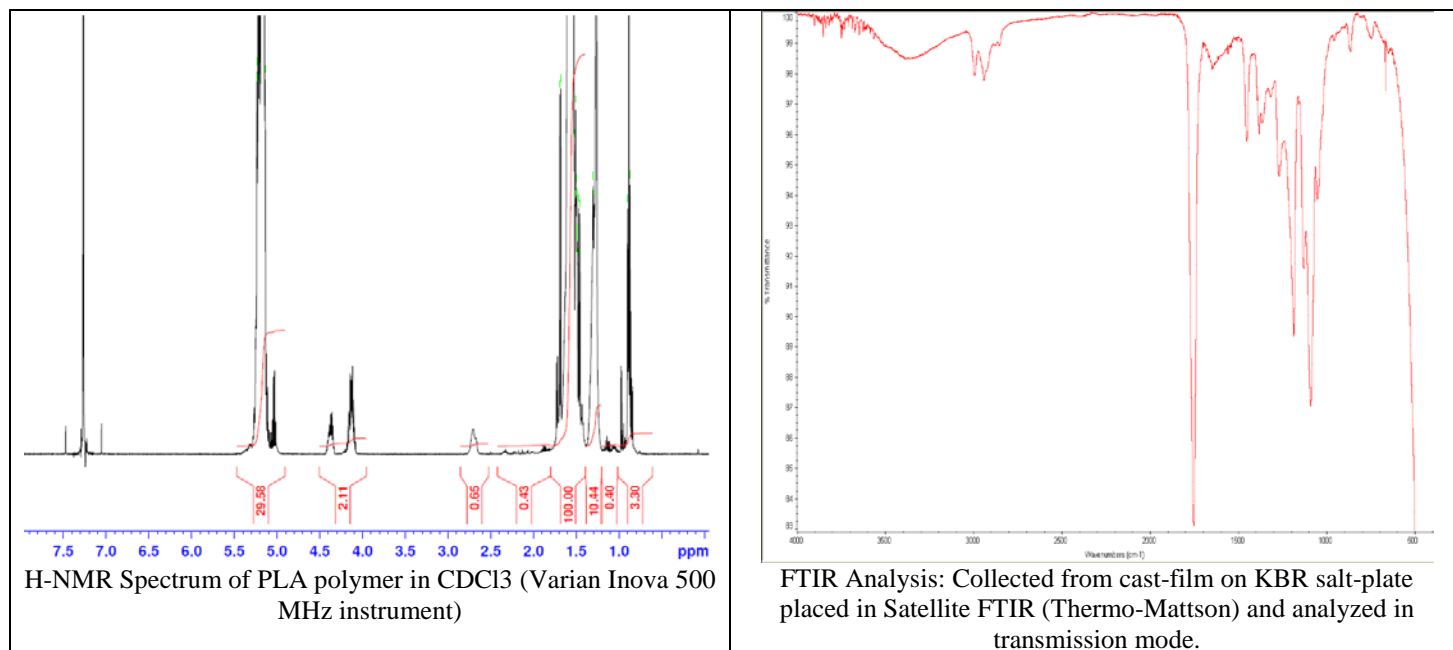
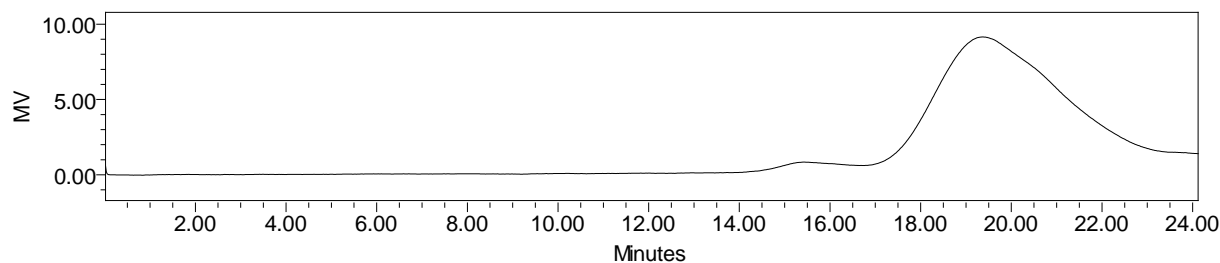


No. AP204 Certificate of Analysis

Product Name: Poly(DL-lactide) ester endcap (Mn: 1,000-5,000 Da) (Lot#: 70303ELH-A)



- GPC analysis of PCL copolymers



- Analysis Method: Waters Breeze 2 system with 1 ml/min THF flow across three GPC columns. Detection via refractive index, calibrated against polystyrene standards.

| Polymer | M _n (from GPC) | M _w (from GPC) | PDI |
|---------|---------------------------|---------------------------|------|
| PLGA | 4758 | 11,303 | 2.38 |

- Structure of copolymers

