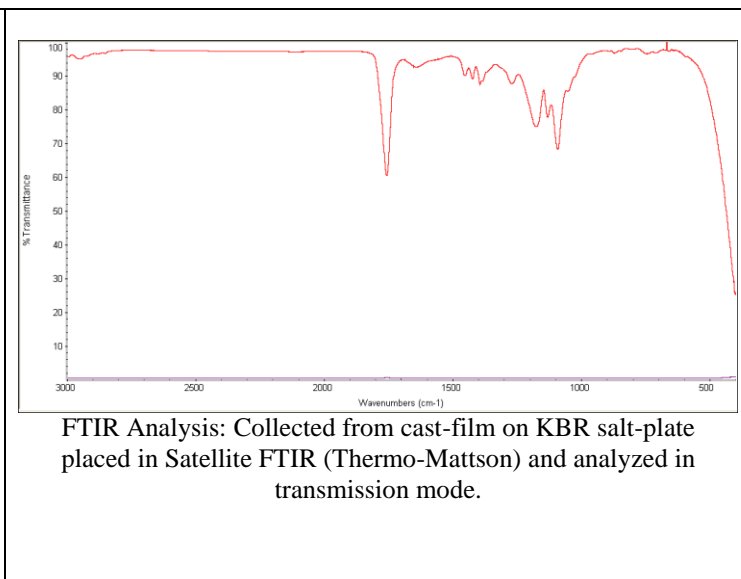
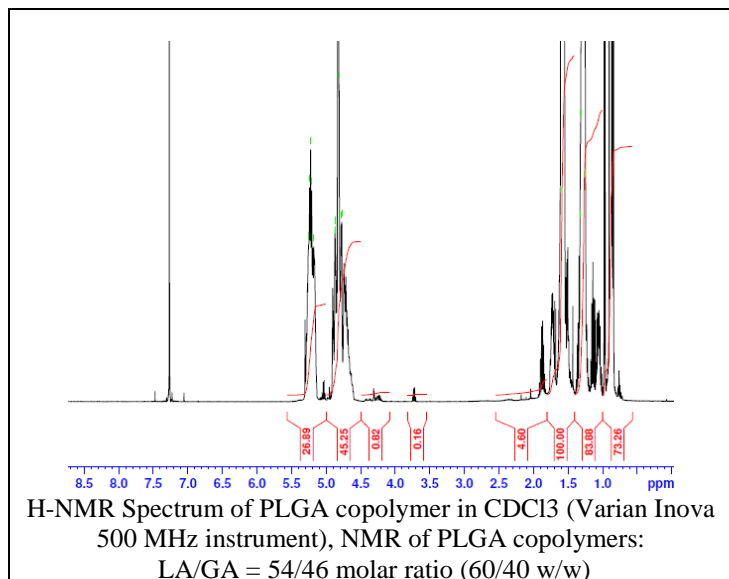


No. AP197

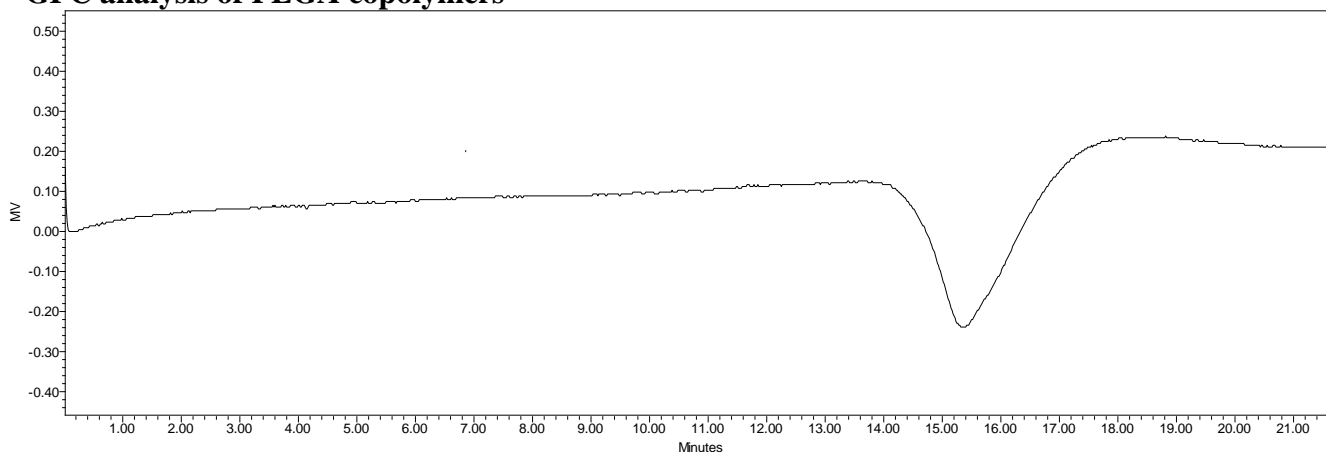
Certificate of Analysis



Product Name: Poly(lactide-co-glycolide) acid endcap (55:45 LA:GA, M_n : 10,000 – 15,000 Da)
(Lot#: 61102FAJ-C)



- **GPC analysis of PLGA copolymers**



Analysis Method: Waters Breeze 2 system with 1 ml/min DCM flow across three GPC columns (7.8 x 300 mm, mixed porosities).
Detection via refractive index, calibrated against polystyrene standards.

Polymer	M_n (from GPC)	M_w (from GPC)	PDI
PLGA	14,933	28,446	1.90

- **Structure of PLGA copolymers**

