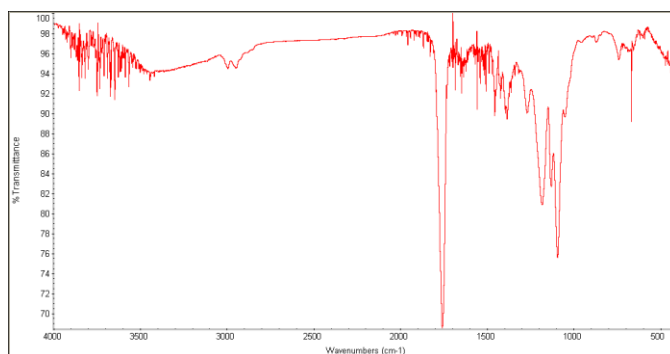
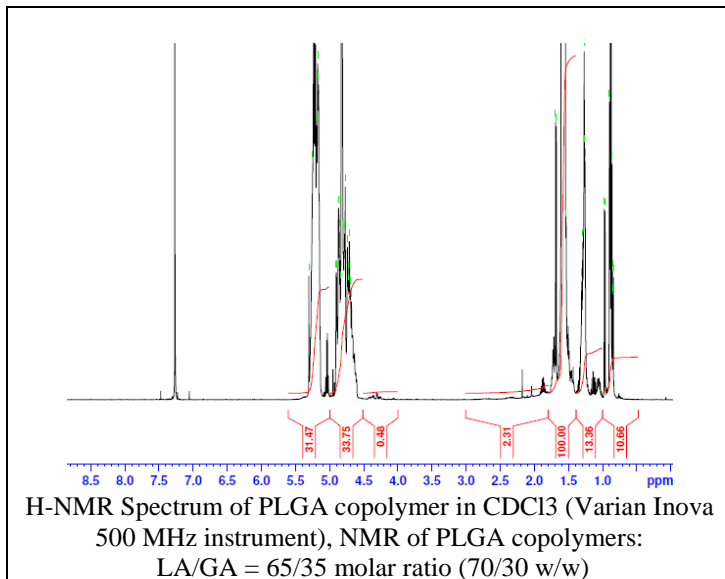
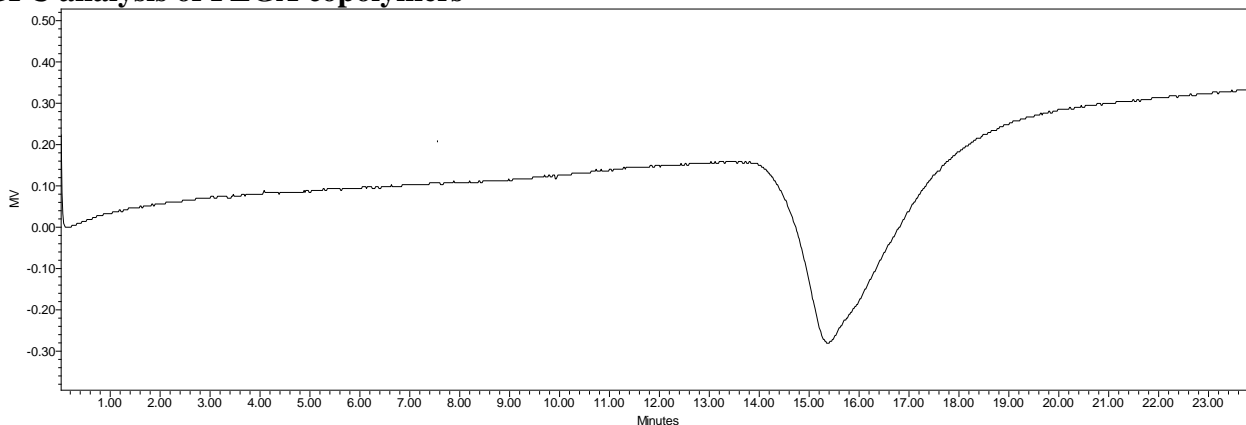


Product Name: Poly(lactide-co-glycolide) acid endcap (65:35 LA:GA, M_n : 10,000-15,000 Da)
 (Lot#: 61102FAJ-A)



FTIR Analysis: Collected from cast-film on KBR salt-plate placed in Satellite FTIR (Thermo-Mattson) and analyzed in transmission mode.

• GPC analysis of PLGA copolymers



Analysis Method: Waters Breeze 2 system with 1 ml/min DCM flow across three GPC columns (7.8 x 300 mm, mixed porosities).
 Detection via refractive index, calibrated against polystyrene standards.

Polymer	M_n (from GPC)	M_w (from GPC)	PDI
PLGA	13,660	18,679	1.37

• Structure of PLGA copolymers

