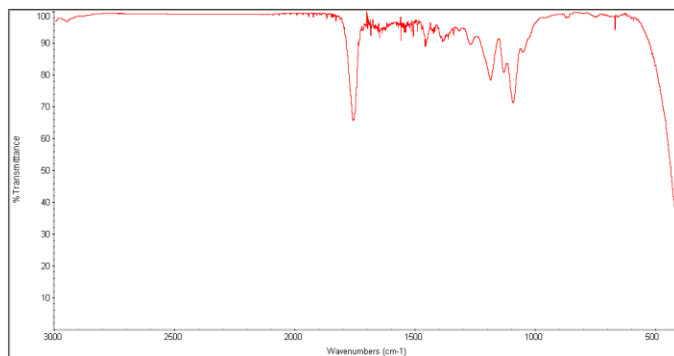
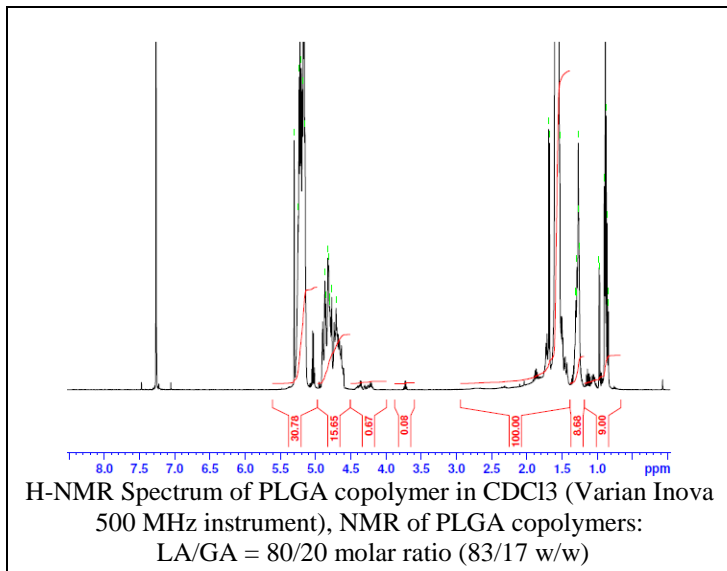
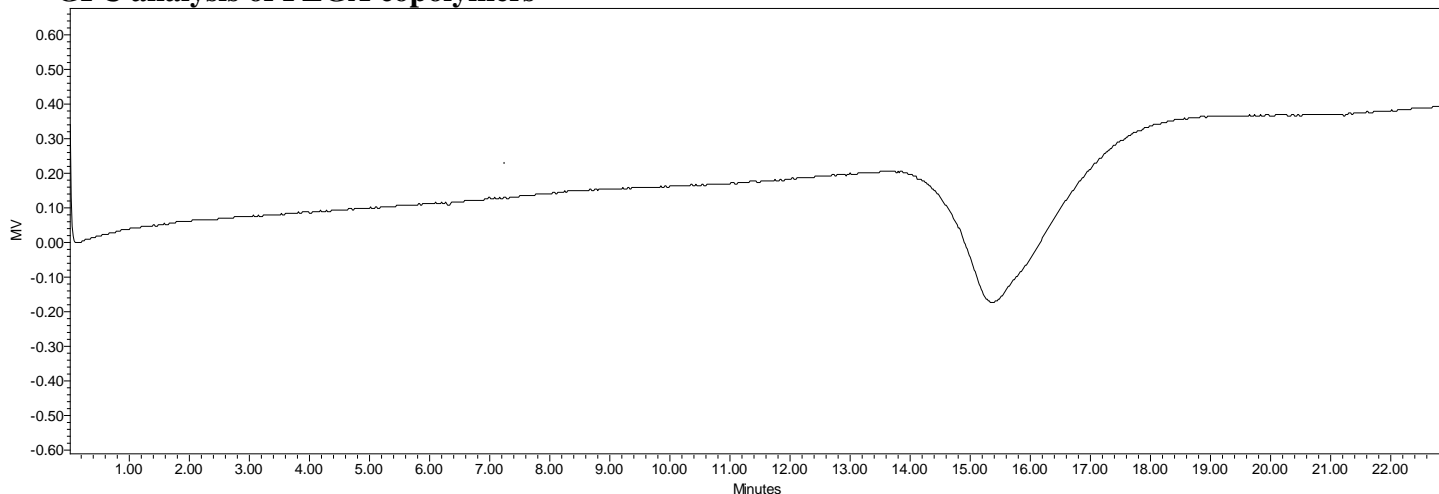


Product Name: Poly(lactide-co-glycolide) acid endcap (80:20 LA:GA, M_n : 10,000-15,000 Da)
 (Lot#: 61101ELH-B)



FTIR Analysis: Collected from cast-film on KBR salt-plate placed in Nicolet Protégé 460 and analyzed in transmission mode.

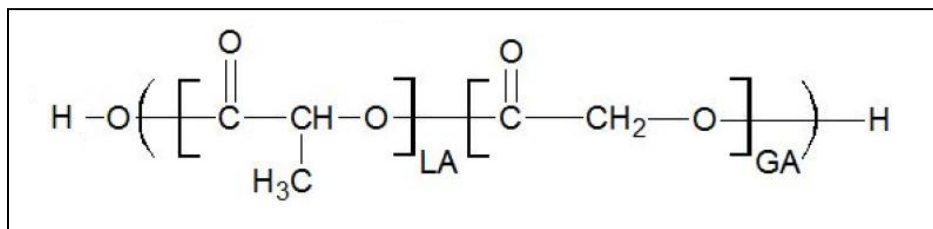
• **GPC analysis of PLGA copolymers**



Analysis Method: Waters Breeze 2 system with 1 ml/min DCM flow across three GPC columns (7.8 x 300 mm, mixed porosities).
 Detection via refractive index, calibrated against polystyrene standards.

Polymer	M_n (from GPC)	M_w (from GPC)	PDI
PLGA	13,678	25,059	1.83

• **Structure of PLGA copolymers**



Material provided for research use only. Not for human use.