

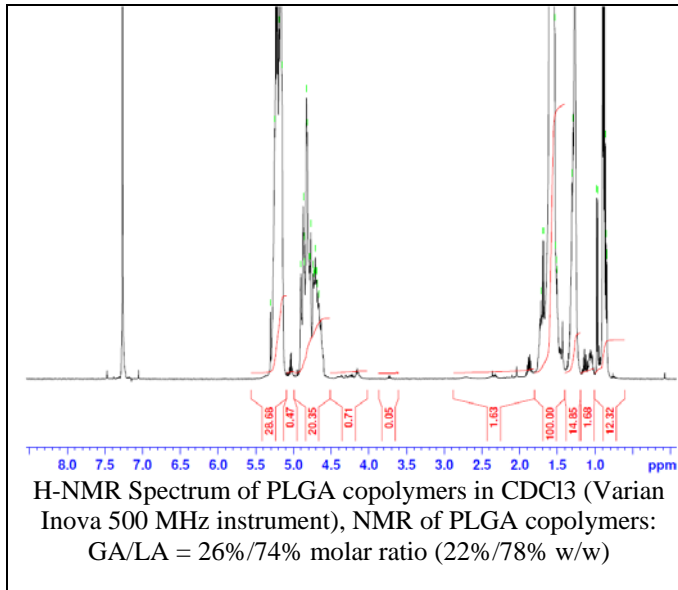
No. AP190

Certificate of Analysis

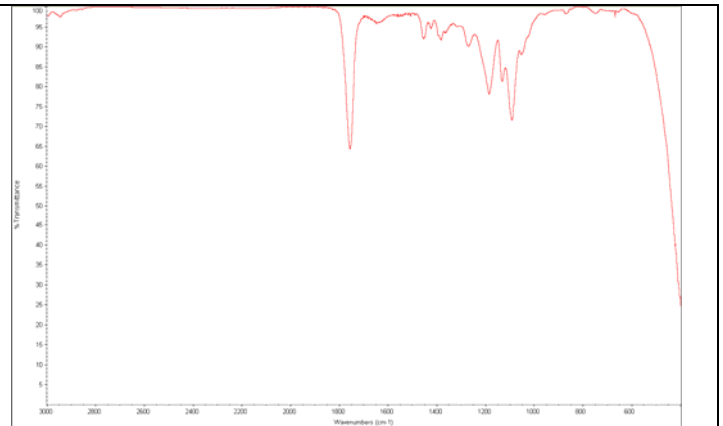


Product Name: Poly(lactide-co-glycolide) ester endcapped (75:25 LA:GA, Mn: 15,000-25,000Da) (Lot#: 60916ELH-B)

H-NMR

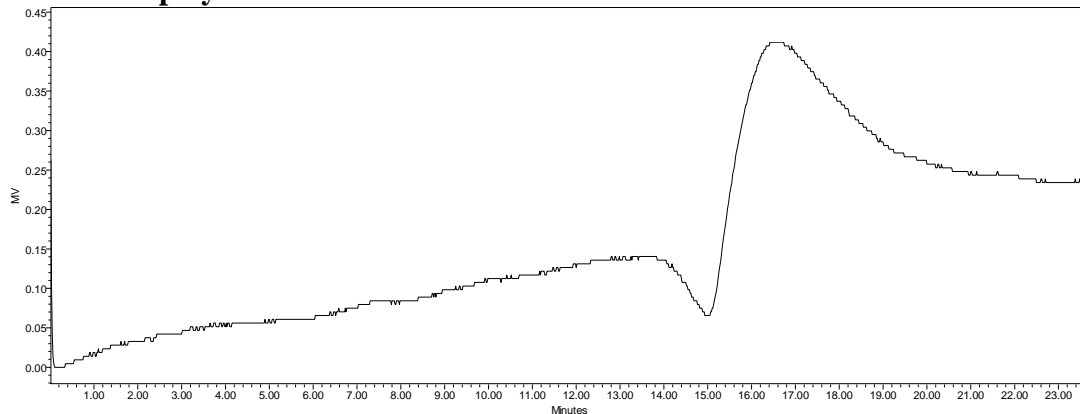


FTIR



Analysis Method: Collected from cast-film on KBR salt-plate placed in Protégé 460 spectrometer (Nicolet) and analyzed in transmission E.S.P. mode.

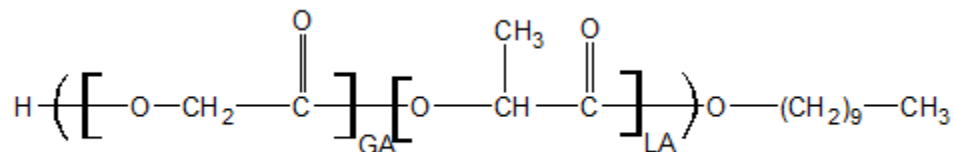
GPC analysis of PLGA copolymers



Analysis Method: Waters Breeze 2 system with 1 ml/min DCM flow across three GPC columns (7.6 x 300 mm, mixed porosities).
Detection via refractive index, calibrated against polystyrene standards.

Polymer	Mn (from GPC)	Mw (from GPC)	PDI
PLGA	19,606	46,893	2.39

- Structure of PLGA copolymers



Material provide for research use only. Not for human use.