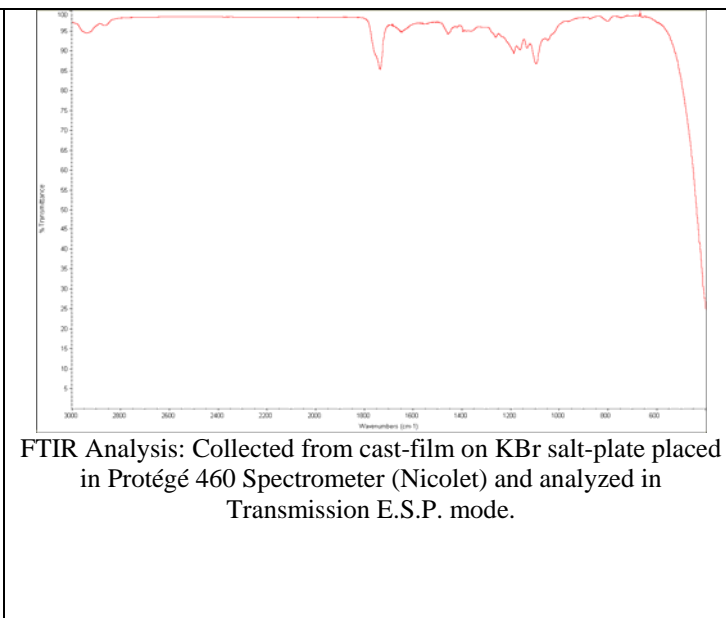
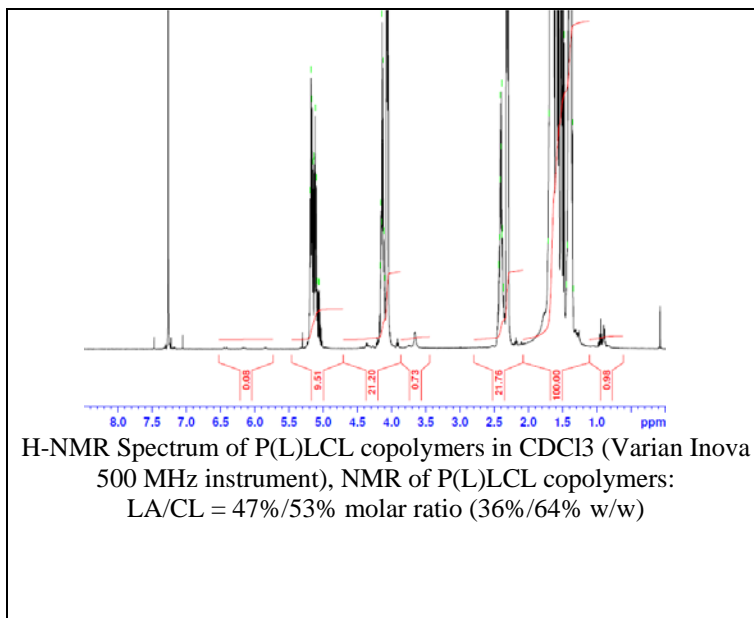
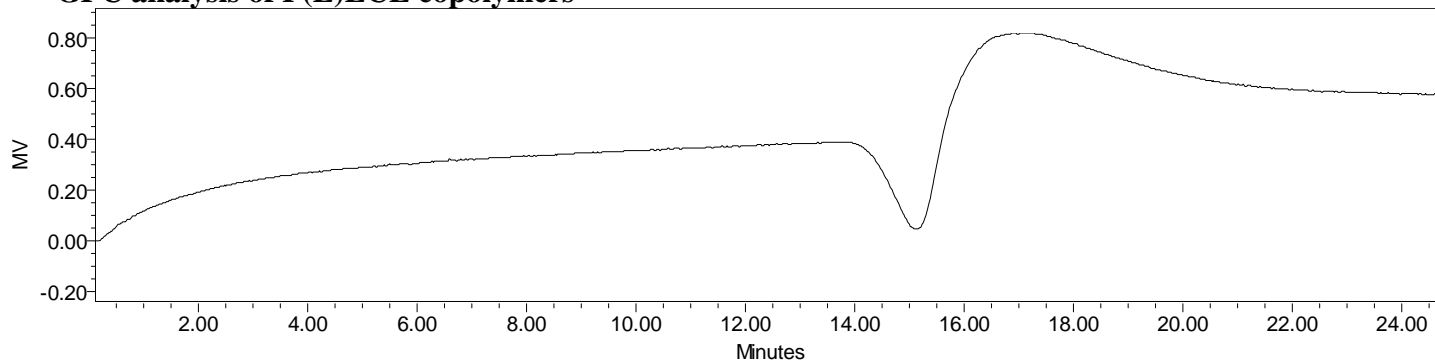


Product Name: Poly(L-lactide-co-caprolactone) Copolymer acid endcap (50:50 LA:CL, M_n : 25,000-35,000 Da) (Lot#: 60907ELH-A)



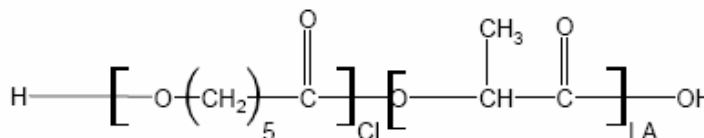
• GPC analysis of P(L)LCL copolymers



Analysis Method: Waters Breeze 2 system with 1 ml/min DCM flow across three GPC columns (7.6 x 300 mm, mixed porosities). Detection via refractive index, calibrated against polystyrene standards.

Polymer	M_n (from GPC)	M_w (from GPC)	PDI
P(L)LCL	32,294	52,725	1.63

• Structure of P(L)LCL copolymers



Material provided for research use only. Not for human use.