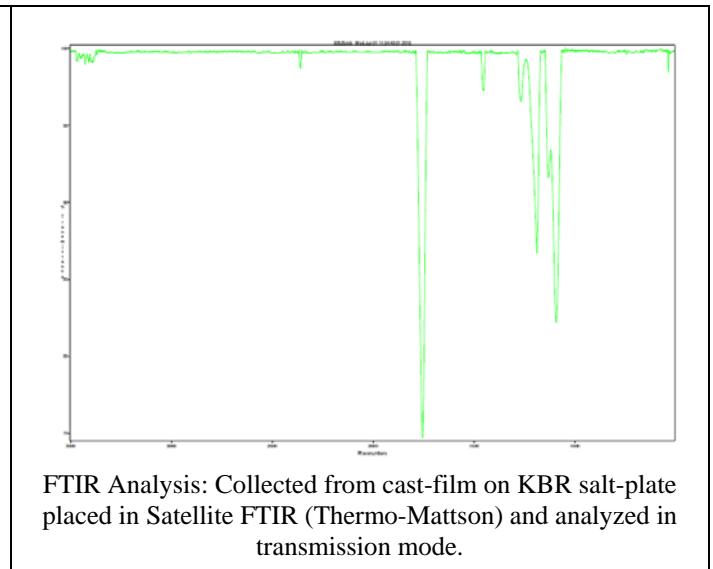
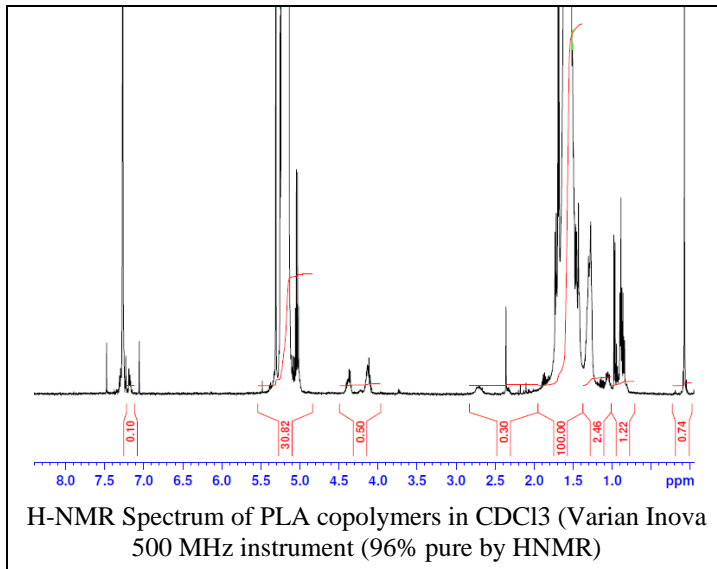


No. AP182

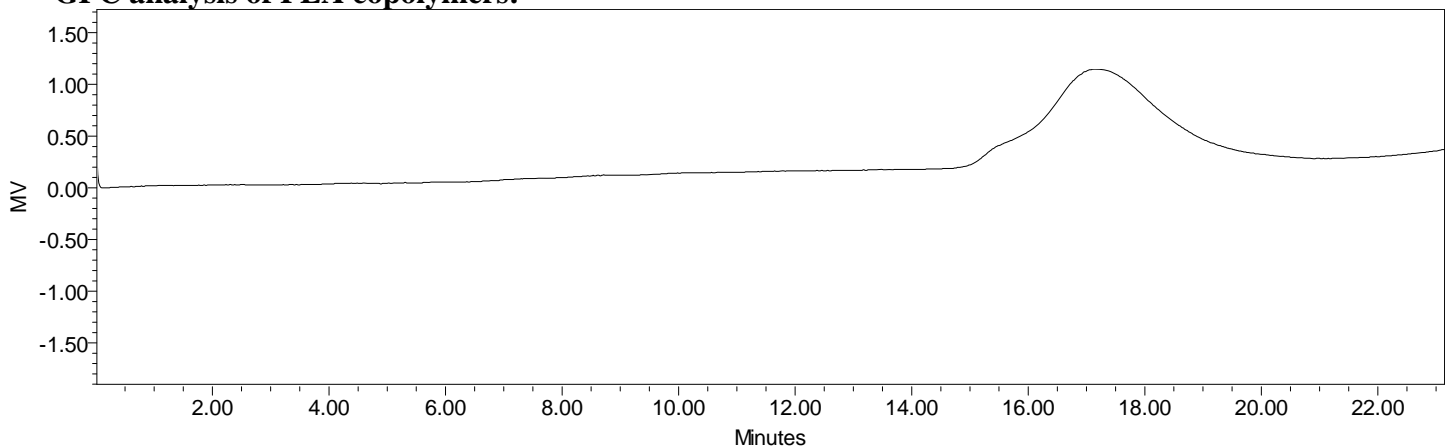
# Certificate of Analysis



Product Name: Poly(DL-Lactide)-dialcohol (Mn: 25,000-35,000Da) (Lot#: 60525MJK-A)



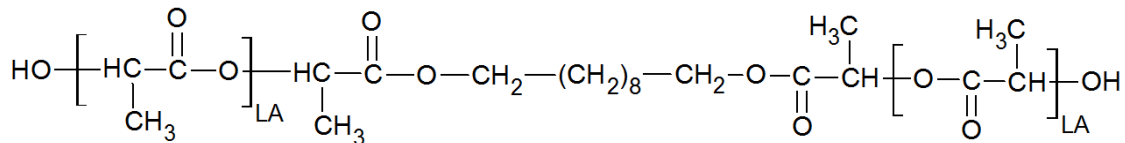
- **GPC analysis of PLA copolymers:**



Analysis Method: Waters Breeze 2 system with 1 ml/min DCM flow across three 300x7.6 mm GPC columns (mixed porosities).  
Detection via refractive index, calibrated against polystyrene standards.

Polymer	Mn (from GPC)	Mw (from GPC)	PDI
PLA	32,313	62,764	1.94

- **Structure of PLA copolymers**



Material provided for research use only. Not for human use.

PolySciTech Division of Akina, Inc. | 3495 Kent Avenue, West Lafayette, IN 47906

765-464-0390 | www.polysciotech.com

For research use only.