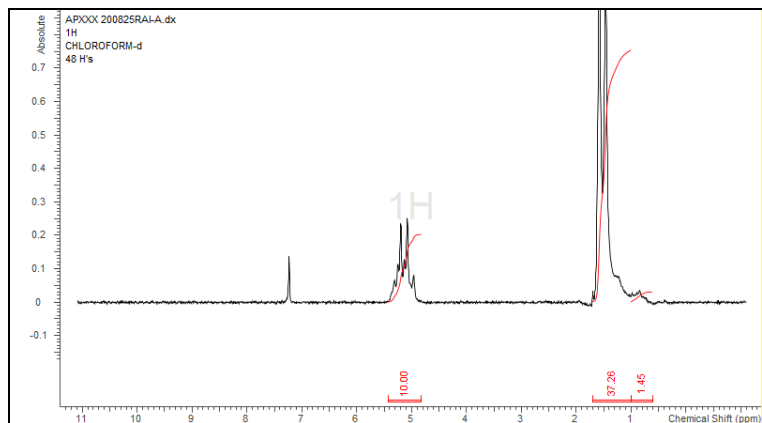


No. AP182

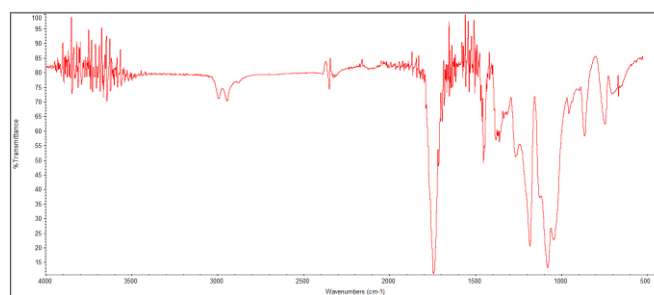
Certificate of Analysis



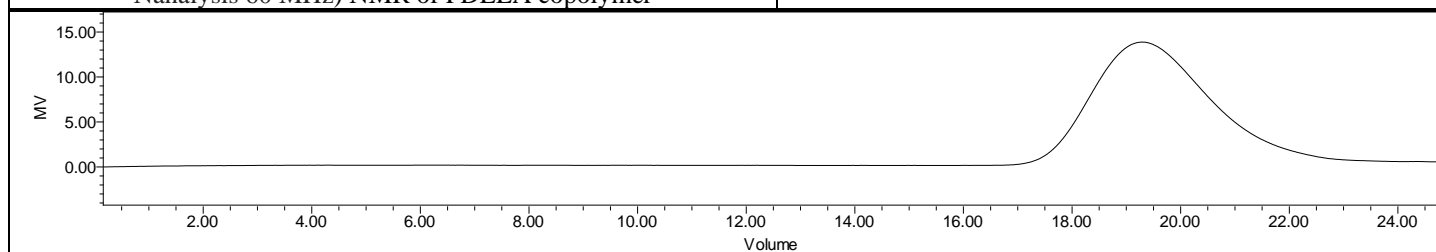
Product Name: Poly(DL-lactide) dialcohol endcapped (1,10 decadiol initiated)
(Mn 25,000-35,000Da) (Lot# 200825RAI-A)



H-NMR Spectrum of copolymers in CDCl₃ (NMReady-60e, Nanalysis 60 MHz) NMR of PDLLA copolymer



FTIR Analysis: Collected from cast-film on KBr salt-plate placed in a Nicolet Avatar 380 spectrometer with ATR Smart Orbit and analyzed in transmission mode.



GPC-ES Analysis Method: Waters Breeze 2 system with 1 ml/min THF flow across three GPC columns. Detection via refractive index, calibrated against polystyrene standards.

Polymer	M _n (from GPC)	M _w (from GPC)	PDI
PDLLA	32,950	46,073	1.40

- **Structure of P(DL)LA-di-Decanol polymer**

