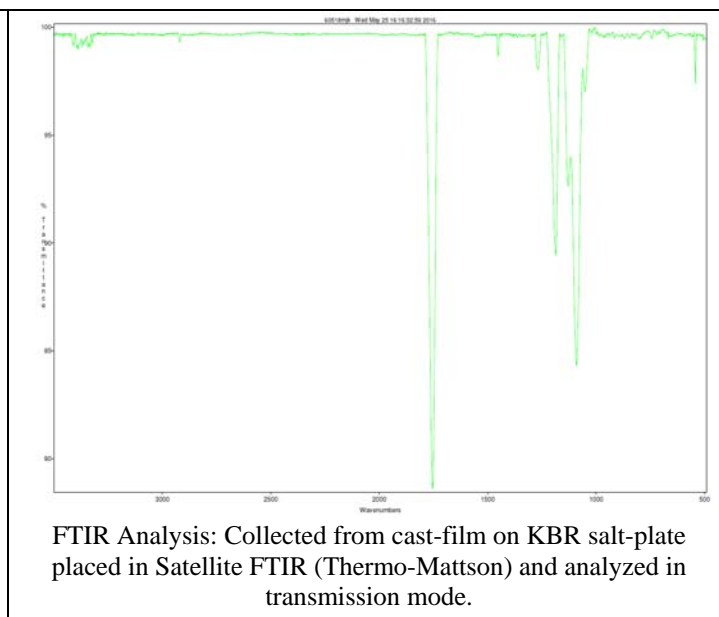
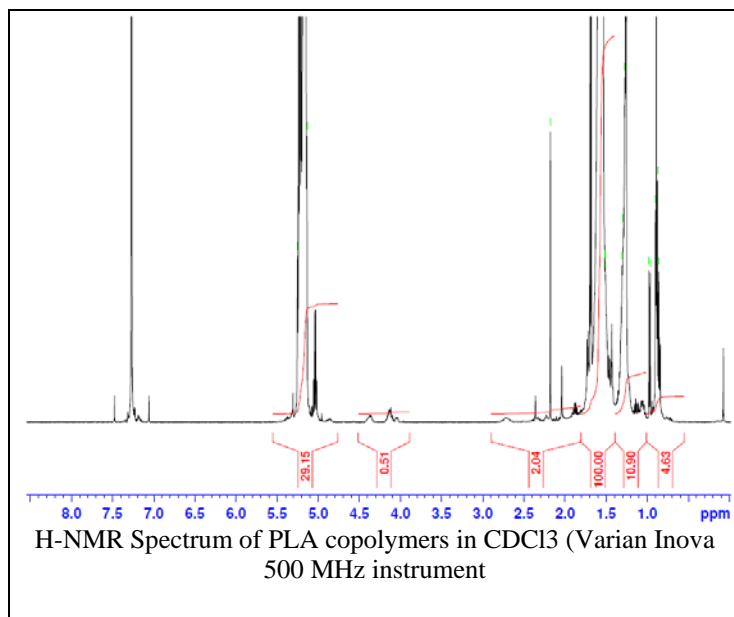
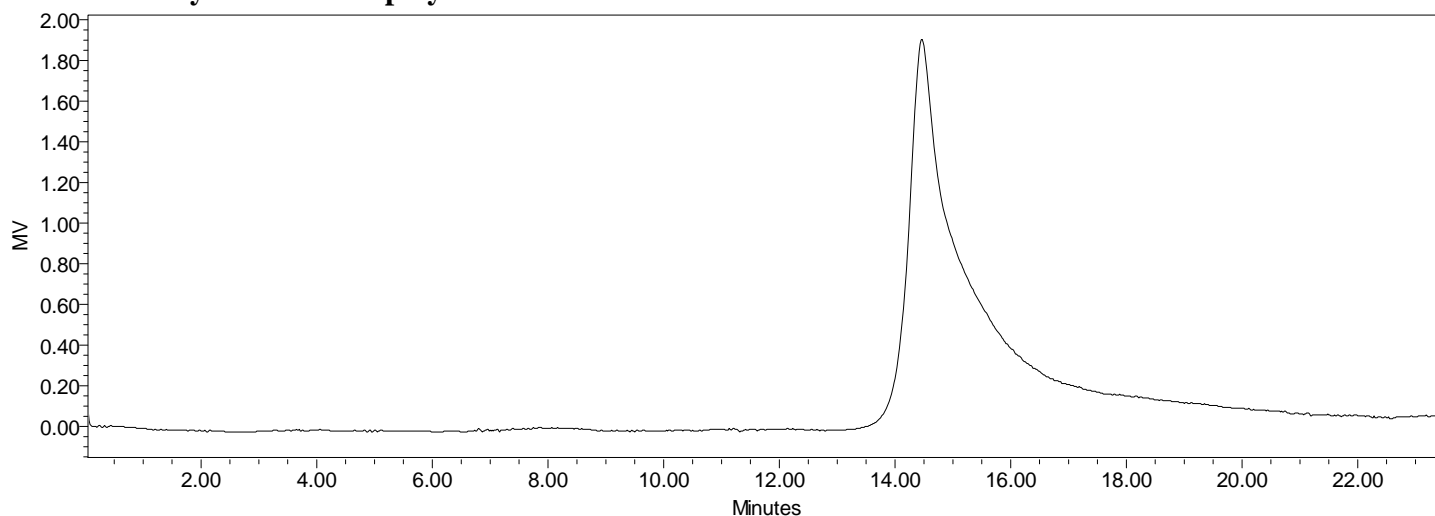


Product Name: Poly(D,L-Lactide)-dialcohol endcap (Mn: 35,000-45,000Da) (Lot#: 60518MJK-B)



• GPC analysis of PLA copolymers



Analysis Method: Waters Breeze 2 system with 1 ml/min DCM flow across three Phenogel 5um columns (Phenomenex). Detection via refractive index, calibrated against polystyrene standards.

Polymer	Mn (from GPC)	Mw (from GPC)	PDI
PLA	42,592	82,482	1.94

• Structure of PLA copolymers

