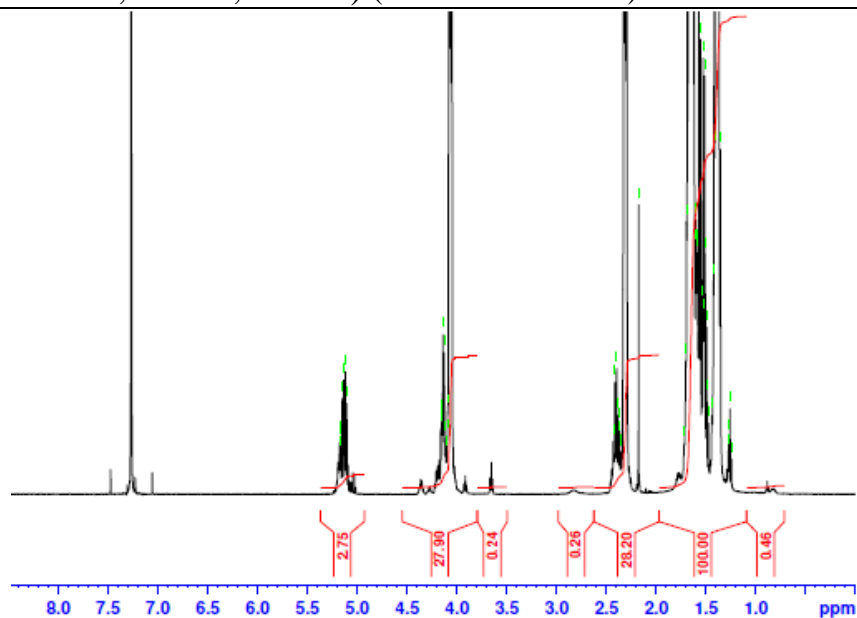


No. AP180

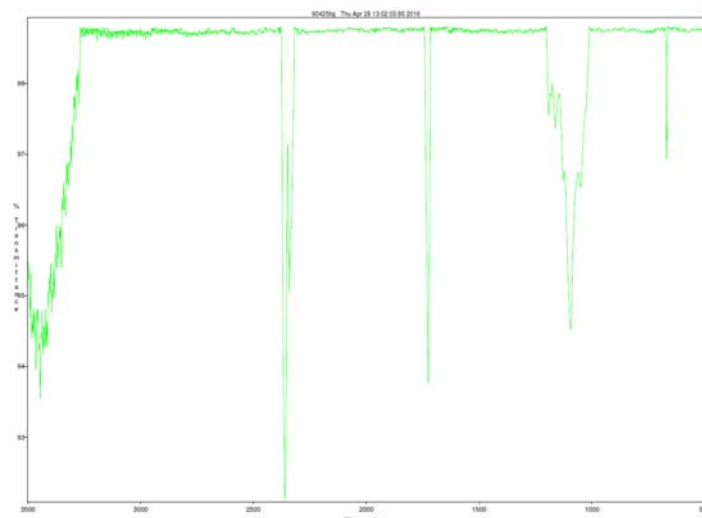
Certificate of Analysis



Product Name: Poly(L-Lactic-co-caprolactone) copolymer ester endcap (15:85 LA:CL, Mn: 10,000-15,000 Da) (Lot#: 60425FAJ-A)

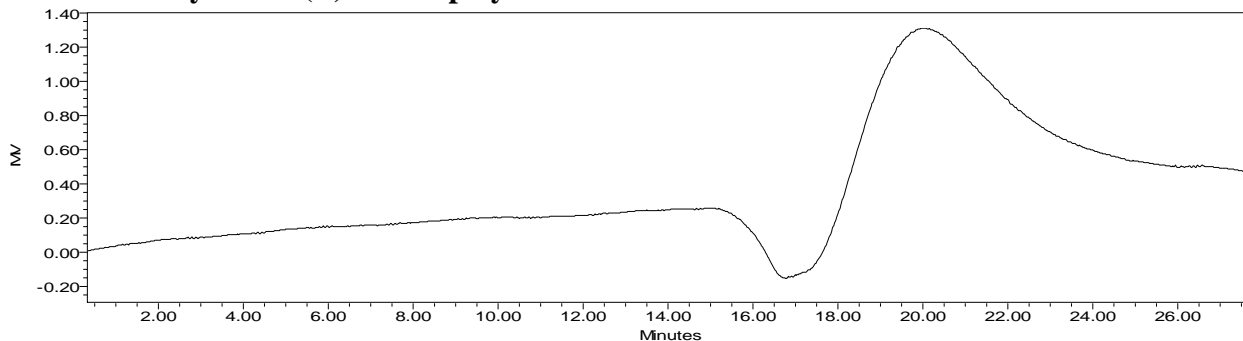


H-NMR Spectrum of P(L)LCL copolymers in CDCl₃ (Varian Inova 500 MHz instrument), NMR of P(L)LCL copolymers: LA/CL = 16%/84% molar ratio (11%/89% w/w)



FTIR Analysis: Collected from cast-film on KBR salt-plate placed in Satellite FTIR (Thermo-Mattson) and analyzed in transmission mode.

• GPC analysis of P(L)LCL copolymers



Analysis Method: Waters Breeze 2 system with 1 ml/min DCM flow across three Phenogel 5um columns (Phenomenex). Detection via refractive index, calibrated against polystyrene standards.

Polymer	Mn (from GPC)	Mw (from GPC)	PDI
P(L)LCL	12,085	20,747	1.72

• Structure of P(L)LCL copolymers

