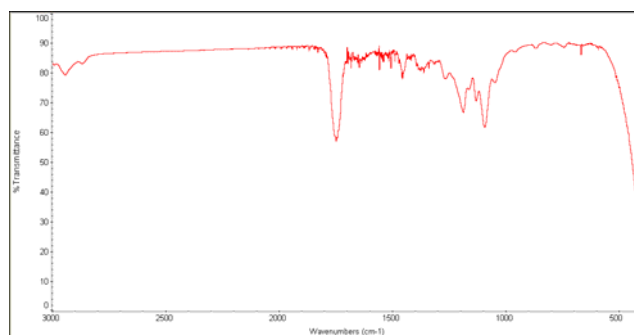
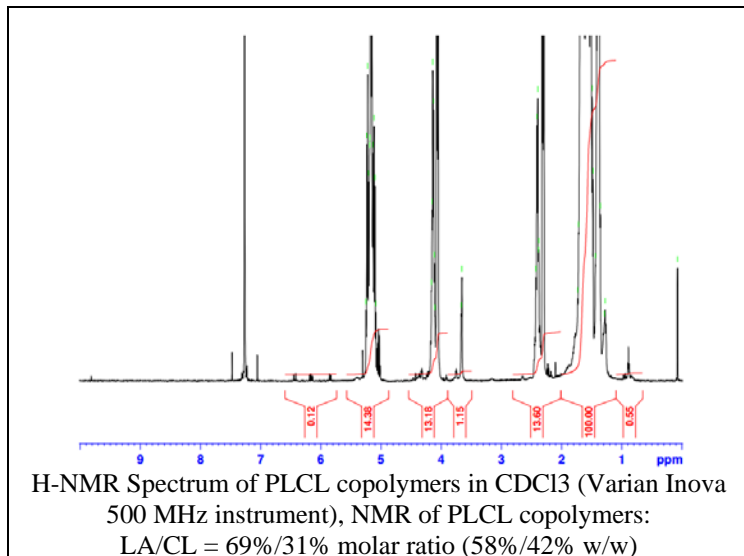


No. AP179

Certificate of Analysis

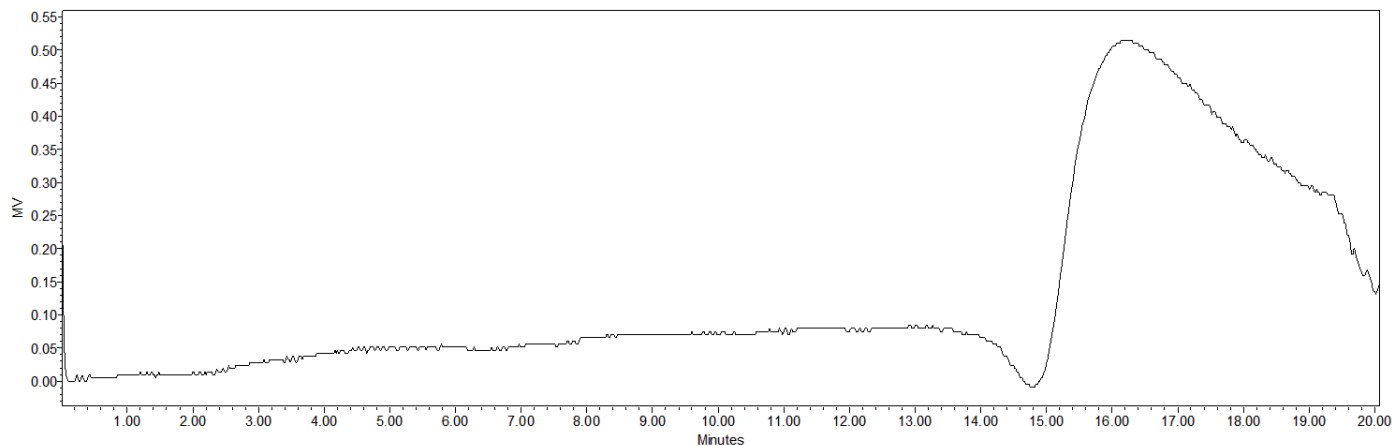


Product Name: Poly((D,L)Lactide-co-caprolactone) Copolymers acid end-capped (70:30
LA:CL, M_n : 35,000-45,000 Da) (Lot#: 60823BPR-A)



FTIR Analysis: Collected from cast-film on KBR salt-plate placed in Satellite FTIR (Thermo-Mattson) and analyzed in transmission mode.

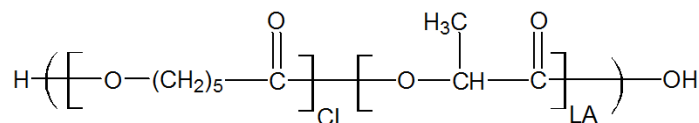
• GPC analysis of P(D,L)LaCL copolymers



Analysis Method: Waters Breeze 2 system with 1 ml/min DCM flow across three Phenogel 5um columns (Phenomenex). Detection via refractive index, calibrated against polystyrene standards.

Polymer	M_n (from GPC)	M_w (from GPC)	PDI
P(D,L)LaCL	44,907	60,577	1.35

• Structure of P(D,L)LaCL copolymers



Material provided for research use only. Not for human use.

PolySciTech Division of Akina, Inc. | 3495 Kent Avenue, West Lafayette, IN 47906
765-464-0390 | www.polysciotech.com

For research use only.