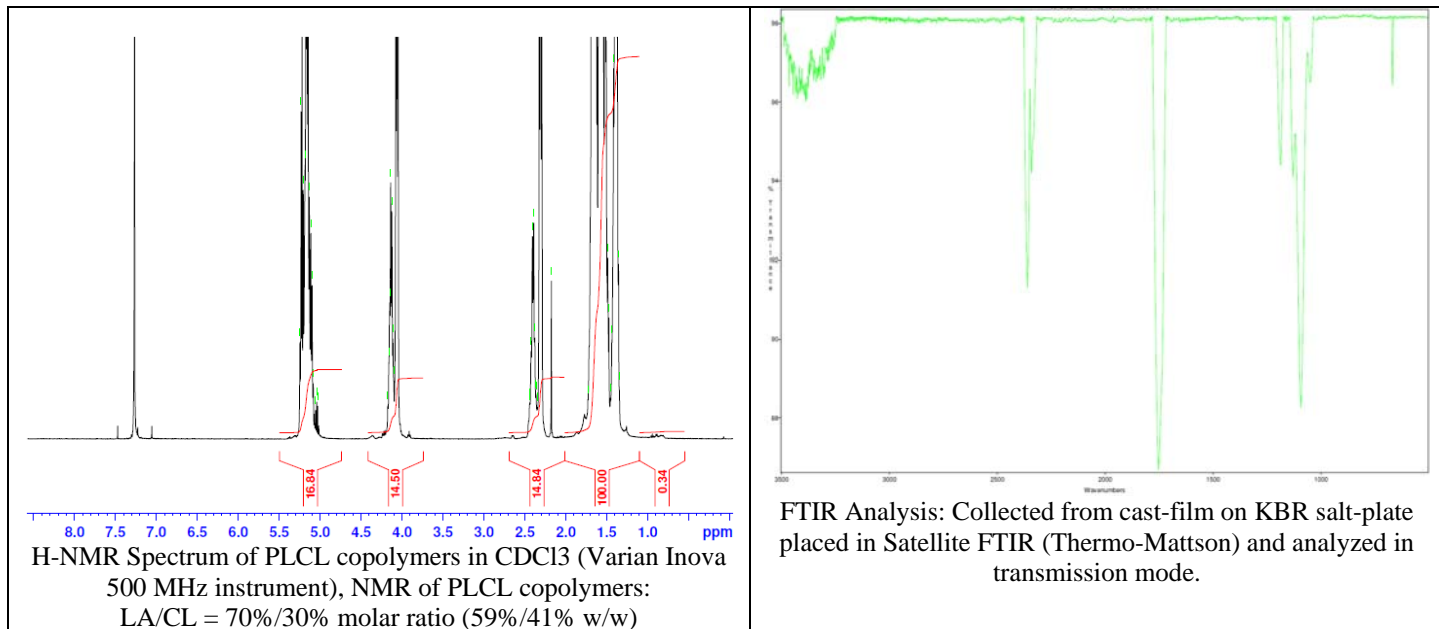


# No. AP179

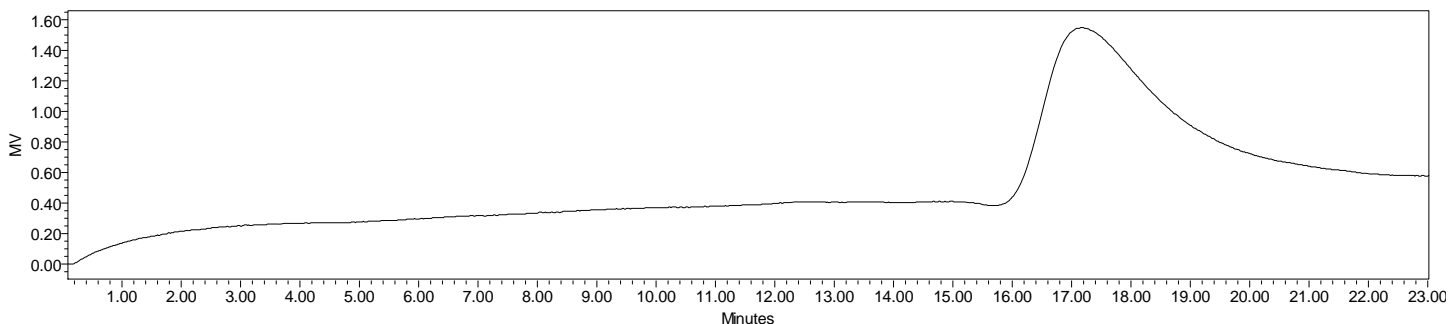
# Certificate of Analysis



Product Name: Poly((D,L)Lactic-co-caprolactone) Copolymers acid end-capped (70:30 LA:CL,  $M_n$ : 35,000-45,000 Da) (Lot#: 60427BPR-A)



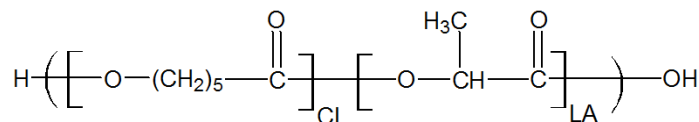
- GPC analysis of P(D,L)LaCL copolymers



Analysis Method: Waters Breeze 2 system with 1 ml/min DCM flow across three Phenogel 5um columns (Phenomenex). Detection via refractive index, calibrated against polystyrene standards.

Polymer	$M_n$ (from GPC)	$M_w$ (from GPC)	PDI
P(D,L)LaCL	44,512	72,854	1.64

- Structure of P(D,L)LaCL copolymers



Material provided for research use only. Not for human use.

PolySciTech Division of Akina, Inc. | 3495 Kent Avenue, West Lafayette, IN 47906  
765-464-0390 | www.polysciotech.com

For research use only.