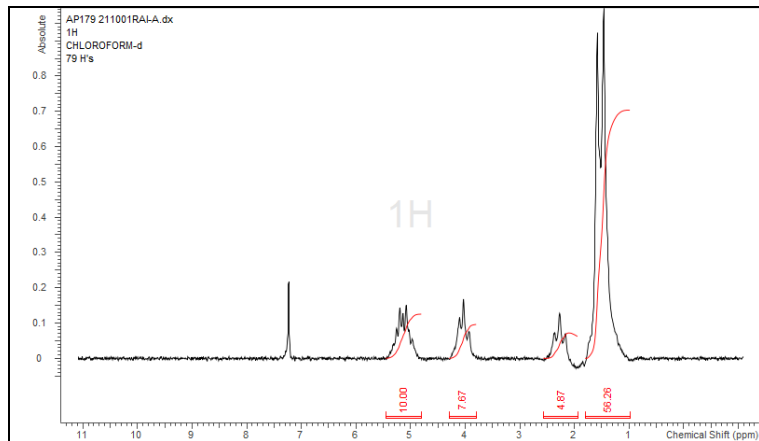


No. AP179

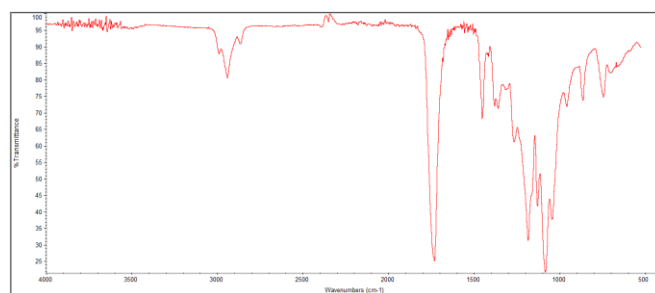
Certificate of Analysis



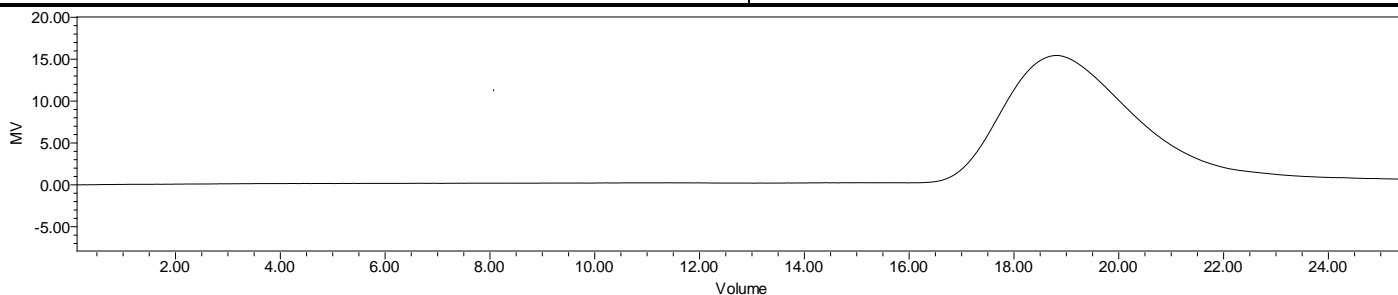
Product Name: Poly((D,L)Lactide-co-caprolactone) copolymers acid end-capped (70:30 LA:CL, M_n : 35,000-45,000 Da) (Lot#: 211001RAI-A)



H-NMR Spectrum of copolymers in $CDCl_3$ (NMReady-60e, Nanalysis 60 MHz) NMR of PDLLA-PCL copolymer: 72%-28% molar ratio (62%-38% w-w)



FTIR Analysis: Collected from Nicolet Avatar 380 spectrometer with ATR Smart Orbit and analyzed in transmission mode.



GPC-ES Analysis Method: Waters Breeze 2 system with 1 ml/min THF flow across three GPC columns. Detection via refractive index, calibrated against polystyrene standards.

Polymer	M_n (from GPC)	M_w (from GPC)	PDI
PDLLA-PCL	41,180	60,255	1.46

- Structure of PDLLA-PCL copolymers

