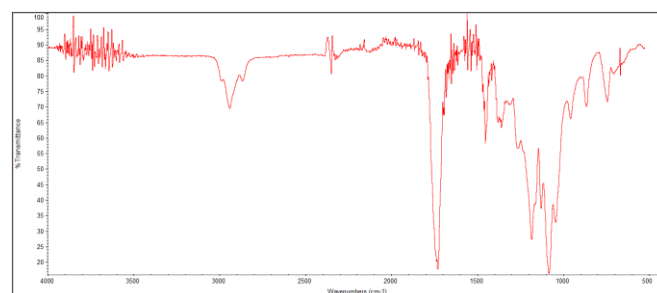
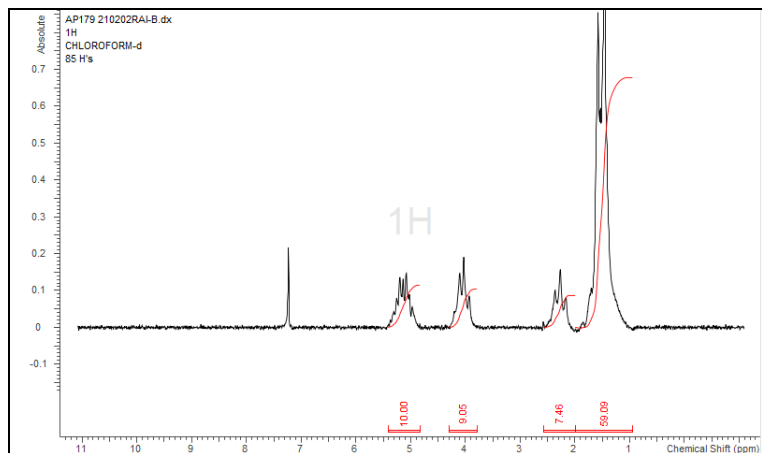


No. AP179

Certificate of Analysis

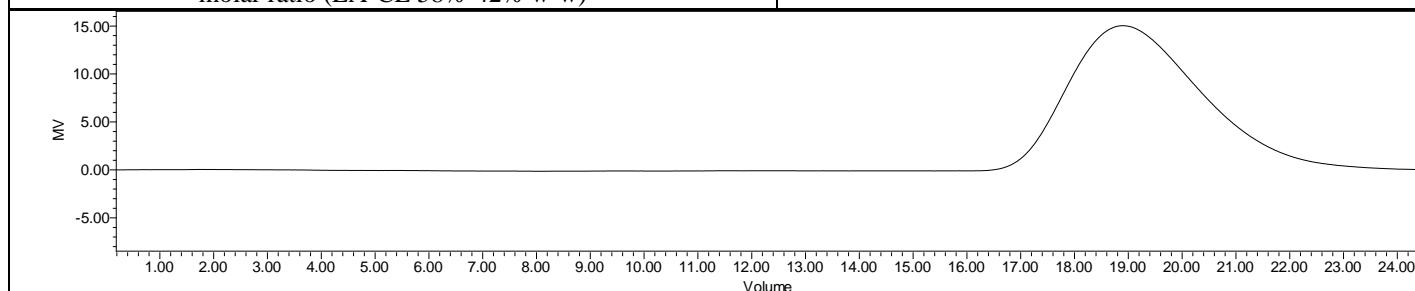


Product Name: Poly((D,L)Lactide-co-caprolactone) copolymers acid end-capped (70:30 LA:CL, M_n : 35,000-45,000 Da) (Lot#: 210202RAI-B)



FTIR Analysis: Collected from cast-film on KBr salt-plate placed in a Nicolet Avatar 380 spectrometer with ATR Smart Orbit and analyzed in transmission mode.

H-NMR Spectrum of copolymers in $CDCl_3$ (NMReady-60e, Nanalysis) NMR of PDLLA-PCL Copolymer: LA-CL = 69%-31% molar ratio (LA-CL 58%-42% w-w)



GPC-ES Analysis Method: Waters Breeze 2 system with 1 ml/min THF flow across three GPC columns. Detection via refractive index, calibrated against polystyrene standards.

Polymer	M_n (from GPC)	M_w (from GPC)	PDI
PDLLA-PCL	37,883	57,262	1.51

- Structure of PDLLA-PCL copolymers**

