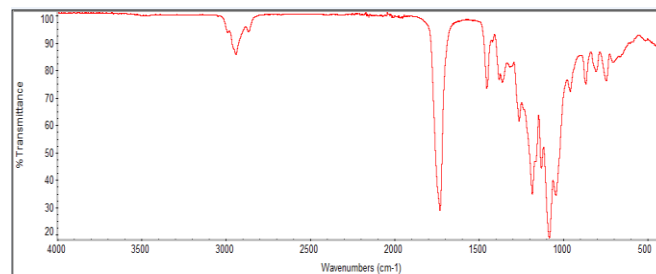
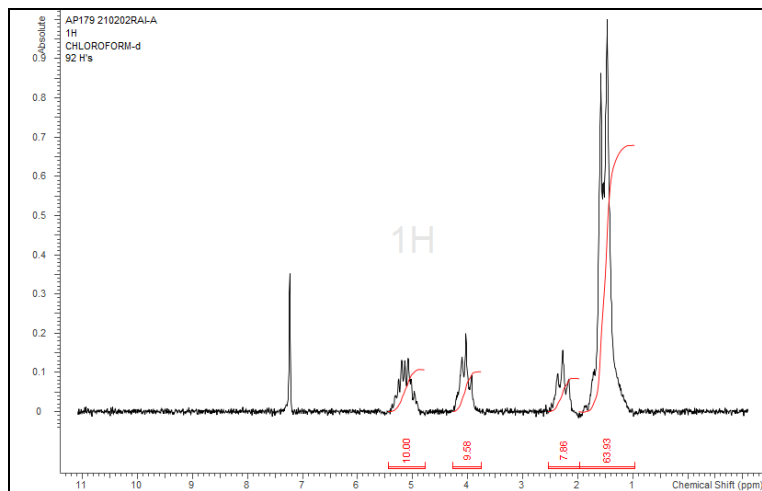


# No. AP179

# Certificate of Analysis

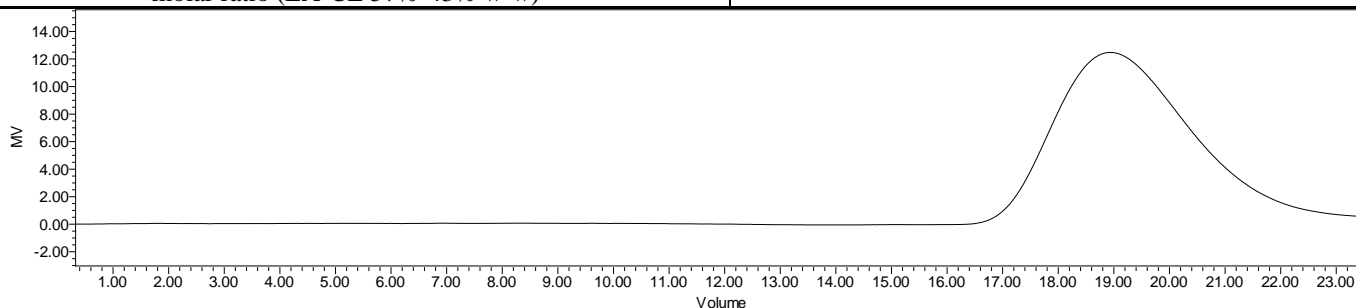


Product Name: Poly((D,L)Lactide-co-caprolactone) copolymers acid end-capped (70:30 LA:CL,  $M_n$ : 35,000-45,000 Da) (Lot#: 210202RAI-A)



FTIR Analysis: Collected from Nicolet Avatar 380 spectrometer with ATR Smart Orbit and analyzed in transmission mode.

H-NMR Spectrum of copolymers in  $CDCl_3$  (NMReady-60e, Nanalysis) NMR of PDLA-PCL Copolymer: LA-CL = 68%-32% molar ratio (LA-CL 57%-43% w-w)



GPC-ES Analysis Method: Waters Breeze 2 system with 1 ml/min THF flow across three GPC columns. Detection via refractive index, calibrated against polystyrene standards.

Polymer	$M_n$ (from GPC)	$M_w$ (from GPC)	PDI
PDLA-PCL	35,825	55,408	1.55

## • Structure of PDLA-PCL copolymers

