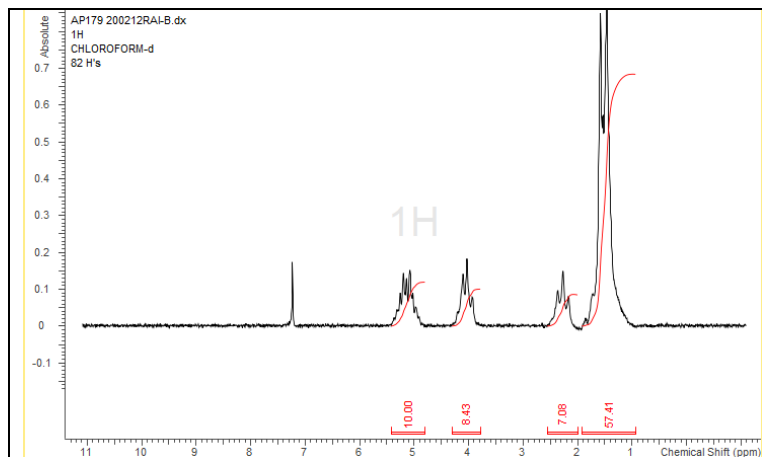


No. AP179

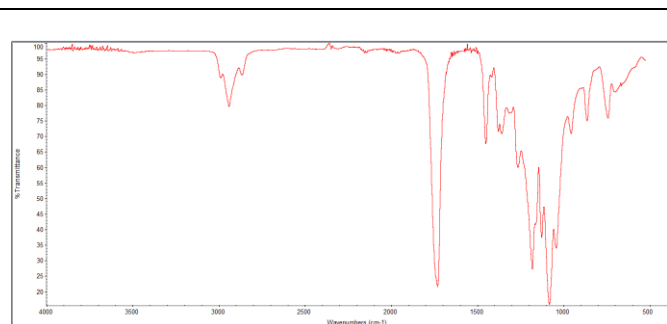
Certificate of Analysis



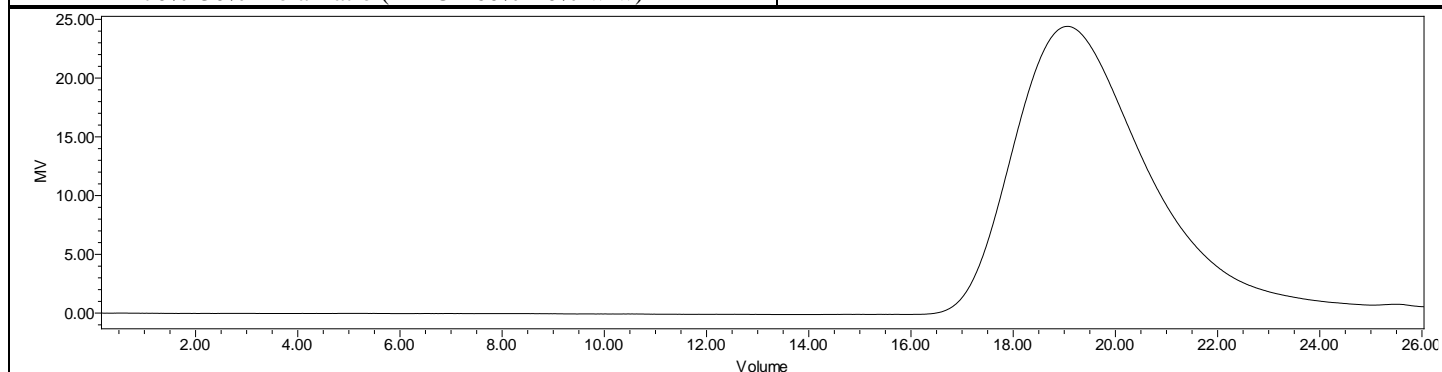
Product Name: Poly((D,L)Lactide-co-caprolactone) copolymers acid end-capped (70:30 LA:CL, M_n : 35,000-45,000 Da) (Lot#: 200212RAI-B)



H-NMR Spectrum of copolymers in CDCl₃ (NMReady-60e, Nanalysis 60 MHz) NMR of PDLLA-PCL copolymer: LA-CL = 70%-30% molar ratio (LA-CL 60%-40% w-w)



FTIR Analysis: Collected from cast-film on KBr salt-plate placed in a Nicolet Avatar 380 spectrometer with ATR Smart Orbit and analyzed in transmission mode.



GPC Analysis Method: Waters Breeze 2 system with 1 ml/min THF flow across three GPC columns. Detection via refractive index, calibrated against polystyrene standards.

Polymer	M_n (from GPC)	M_w (from GPC)	PDI
PDLLA-PCL	35,162	52,811	1.50

• Structure of PLGA copolymers

