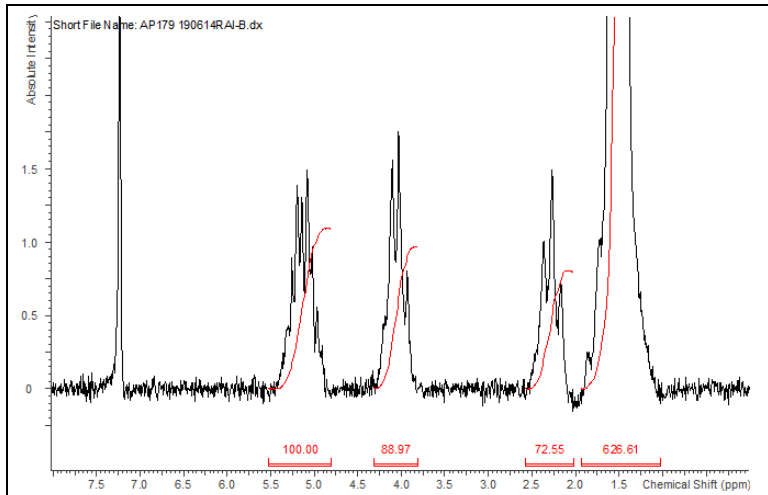


AP179

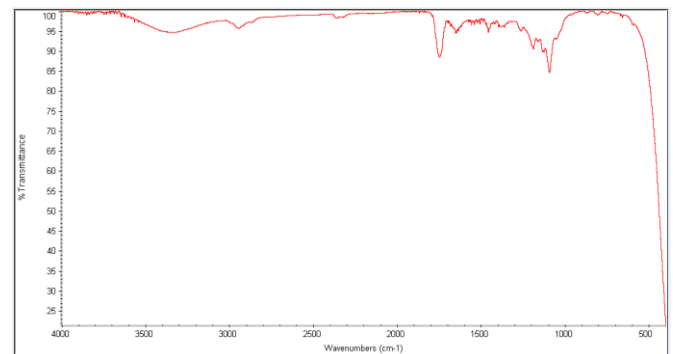
Certificate of Analysis



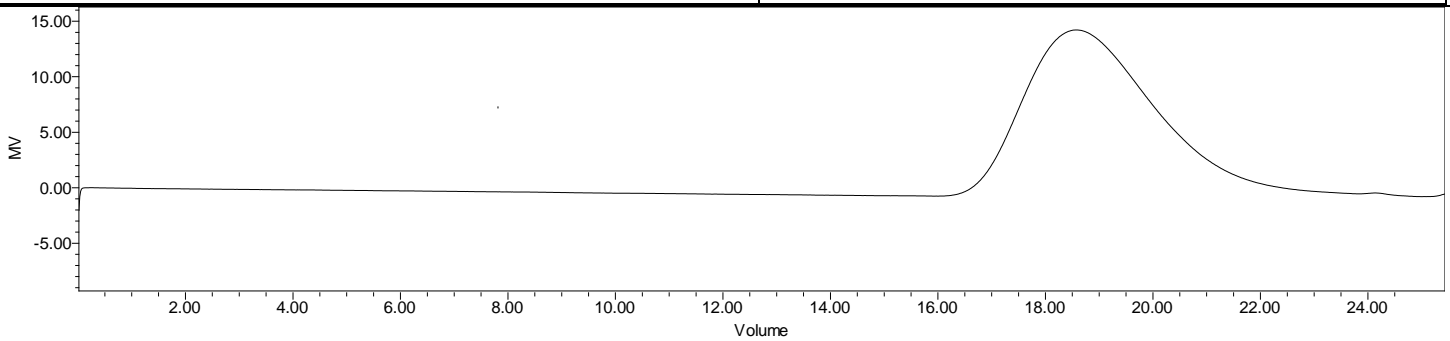
Product Name: Poly((D,L)Lactide-co-caprolactone) copolymers acid end-capped (70:30 LA:CL, M_n : 35,000-45,000 Da) (Lot#: 190614RAI-B)



H-NMR Spectrum of copolymers in CDCl₃ (NMReady 60e, Nanalysis 60 MHz) NMR of PLGA copolymer: LA-CL = 69%-31% molar ratio (LA-CL 59%-41% w-w)



FTIR Analysis: Collected from cast-film on KBr salt-plate placed in a Nicolet Avatar 320 spectrometer and analyzed in transmission mode.



GPC Analysis Method: Waters Breeze 2 system with 1 ml/min THF flow across three GPC columns. Detection via refractive index, calibrated against polystyrene standards.

Polymer	M_n (from GPC)	M_w (from GPC)	PDI
PLGA	44,481	64,571	1.45

- Structure of P(D,L)LaCL copolymers**

