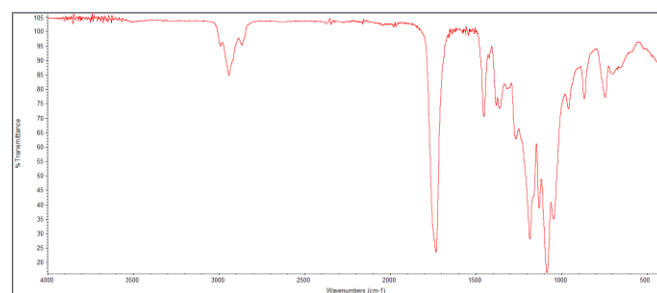
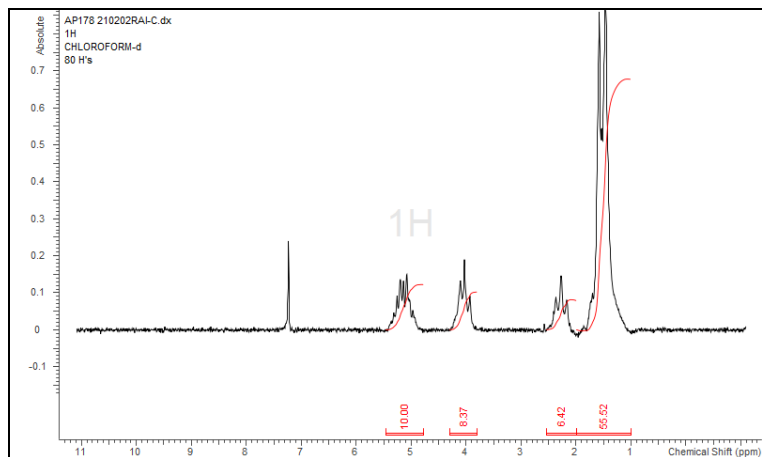


No. AP178

Certificate of Analysis

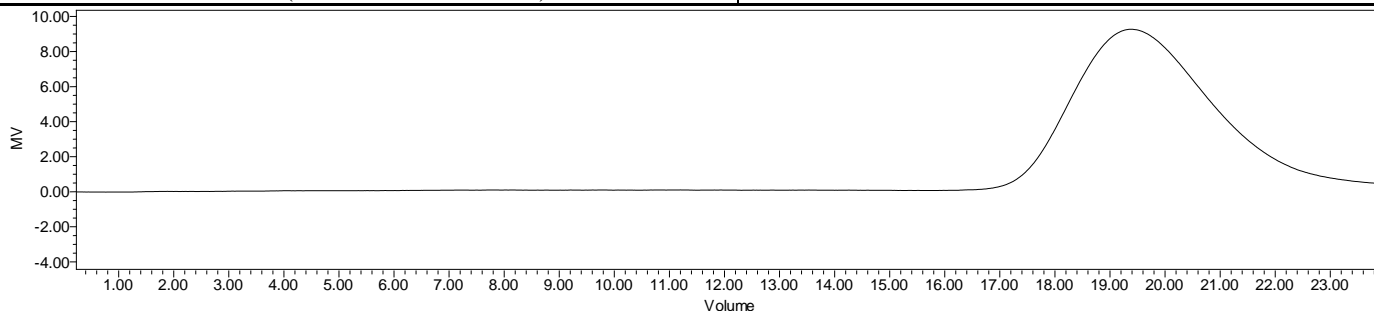


Product Name: Poly(DL-lactide-co-caprolactone) copolymer LA:CL 70:30
acid endcap (M_n 15,000-25,000 Da) (Lot#: 210202RAI-C)



FTIR Analysis: Collected from Nicolet Avator 380 spectrometer with ATR Smart Orbit and analyzed in transmission mode.

H-NMR Spectrum of copolymers in $CDCl_3$ (NMReady-60e, Nanalysis) NMR of PDLLA-PCL Copolymer: LA-CL = 70%-30% molar ratio (LA-CL 60%-40% w-w)



GPC-ES Analysis Method: Waters Breeze 2 system with 1 ml/min THF flow across three GPC columns. Detection via refractive index, calibrated against polystyrene standards.

Polymer	M_n (from GPC)	M_w (from GPC)	PDI
PDLLA-PCL	24,040	41,278	1.72

- Structure of PDLLA-PCL copolymers

