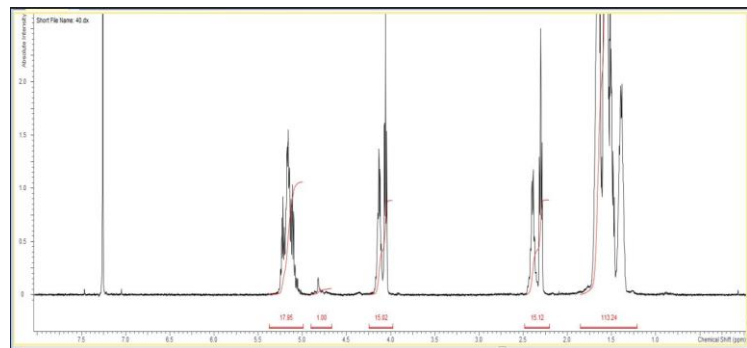


No. AP178

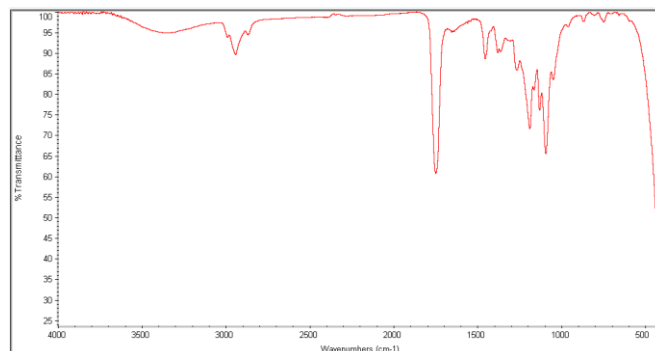
Certificate of Analysis



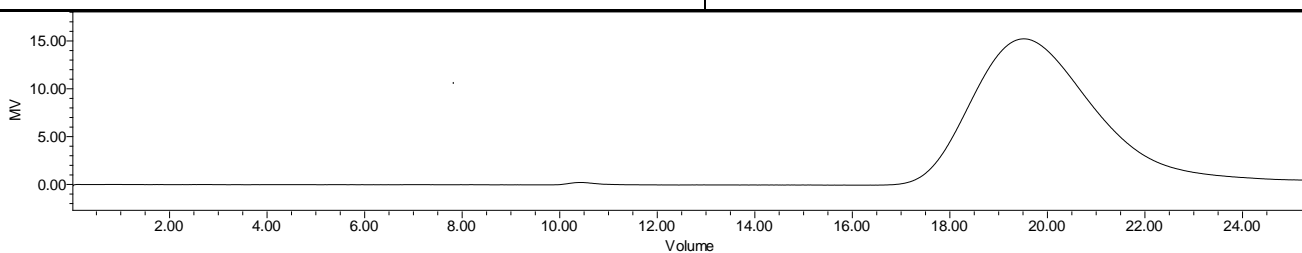
Product Name: Poly(DL-Lactide-co-caprolactone) copolymer LA:CL 70:30
acid endcap (M_n 15,000-25,000 Da) (Lot#: 180820RAI-A)



$^1\text{H-NMR}$ Spectrum of copolymers in CDCl_3 (Varian Inova 500 MHz instrument) NMR of PLCL copolymer: LA-CL = 70%-30% molar ratio (60%-40% w-w)



FTIR Analysis: Collected from cast-film on KBr salt-plate placed in Nicolet Avatar 320 spectrometer and analyzed in transmission mode.



GPC Analysis Method: Waters Breeze 2 system with 1 ml/min THF flow across three GPC columns. Detection via refractive index, calibrated against polystyrene standards.

Polymer	M_n (from GPC)	M_w (from GPC)	PDI
PLCL	18,627	34,811	1.86

- Structure of PLCL copolymers**

