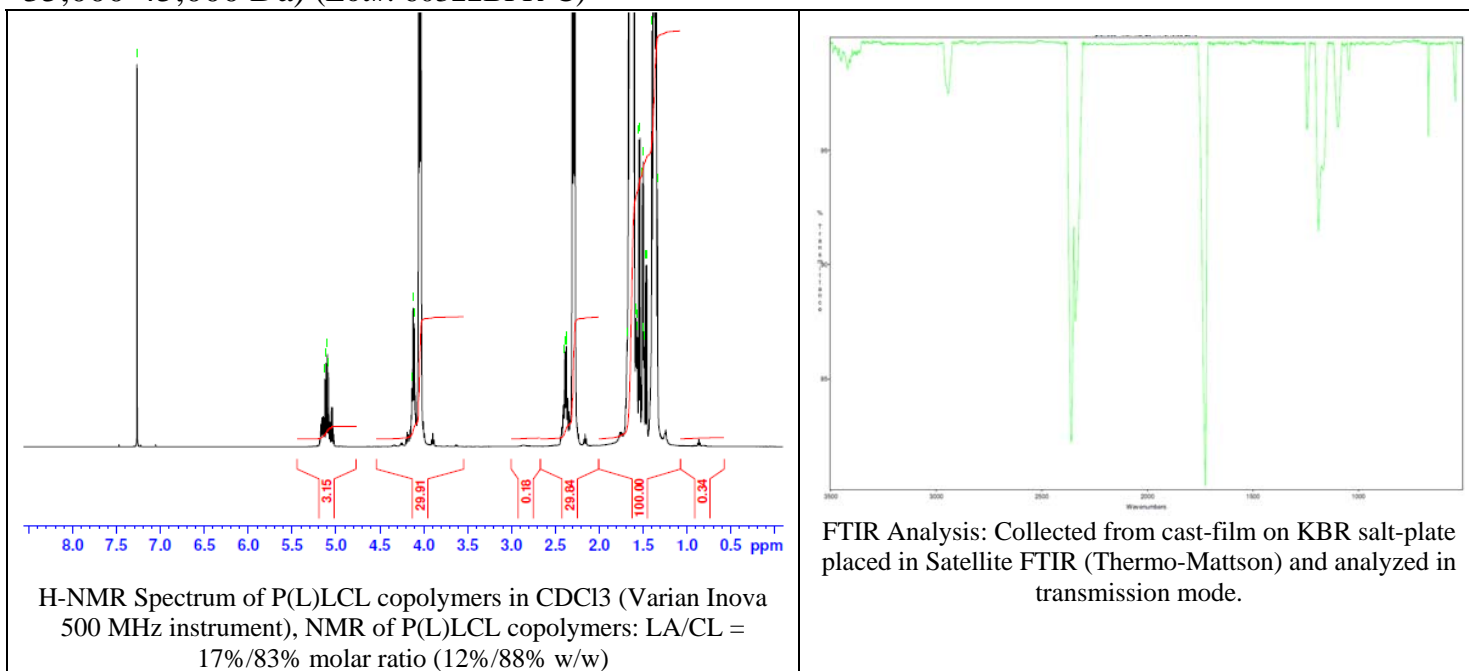


No. AP174

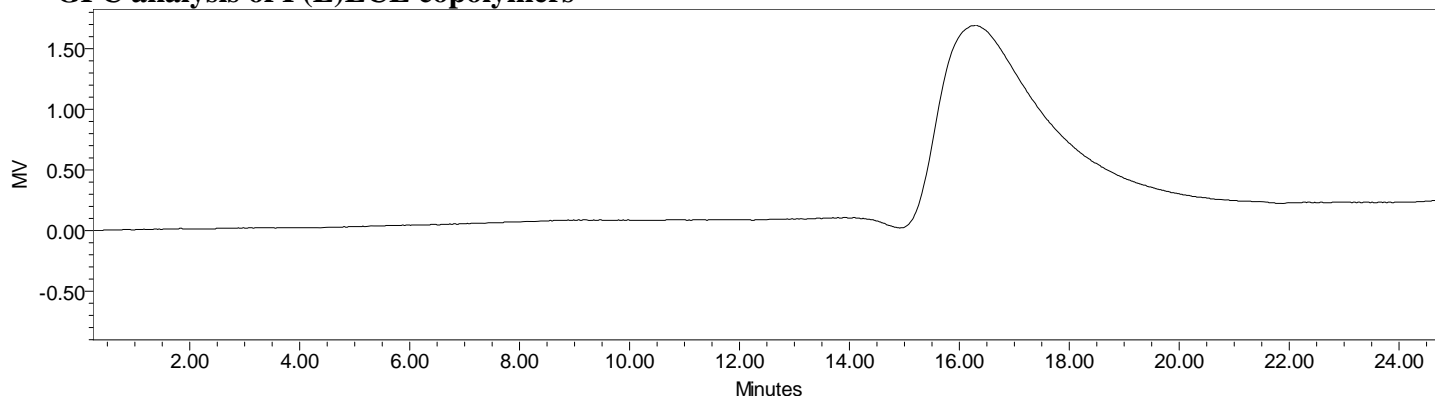
Certificate of Analysis



Product Name: Poly(L-Lactic-co-caprolactone) copolymer ester endcap (15:85 LA:CL, Mn: 35,000-45,000 Da) (Lot#: 60322BPR-C)



• GPC analysis of P(L)LCL copolymers



Analysis Method: Waters Breeze 2 system with 1 ml/min DCM flow across three Phenogel 5um columns (Phenomenex). Detection via refractive index, calibrated against polystyrene standards.

Polymer	Mn (from GPC)	Mw (from GPC)	PDI
P(L)LCL	44,456	68,111	1.27

• Structure of P(L)LCL copolymers

