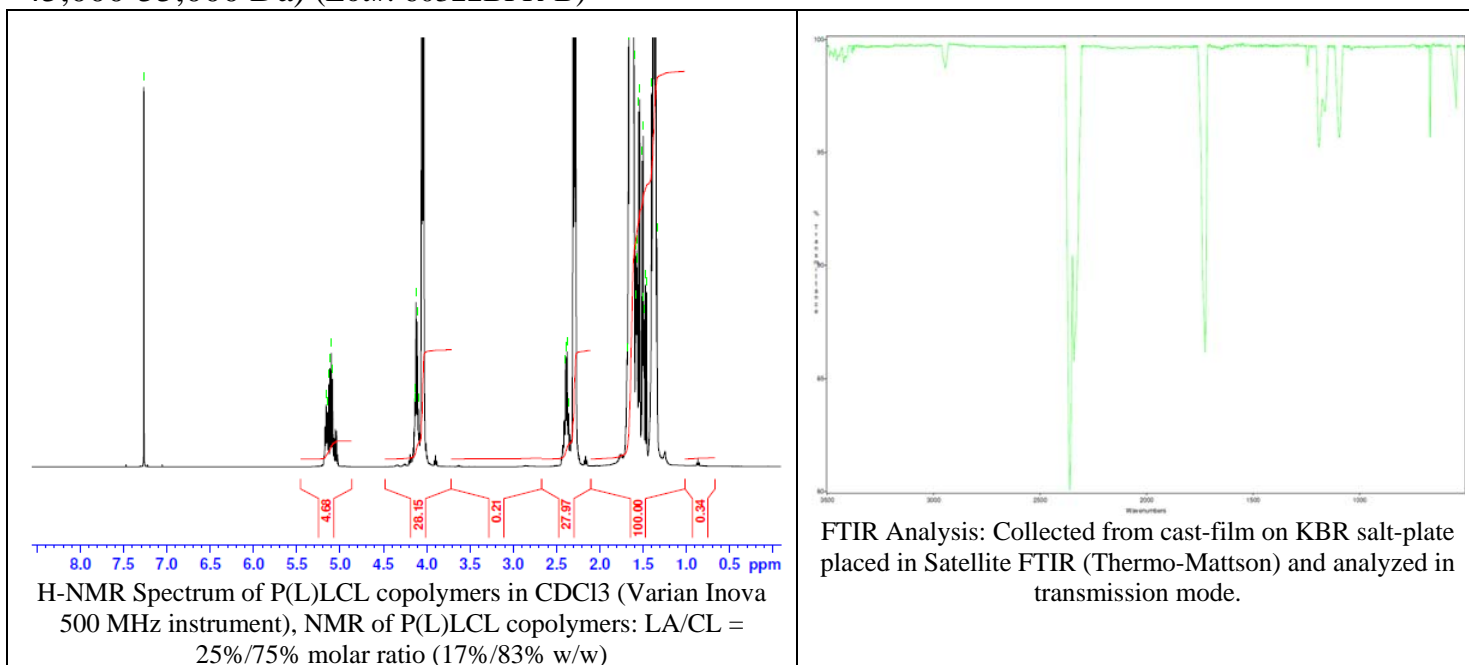


# No. AP173

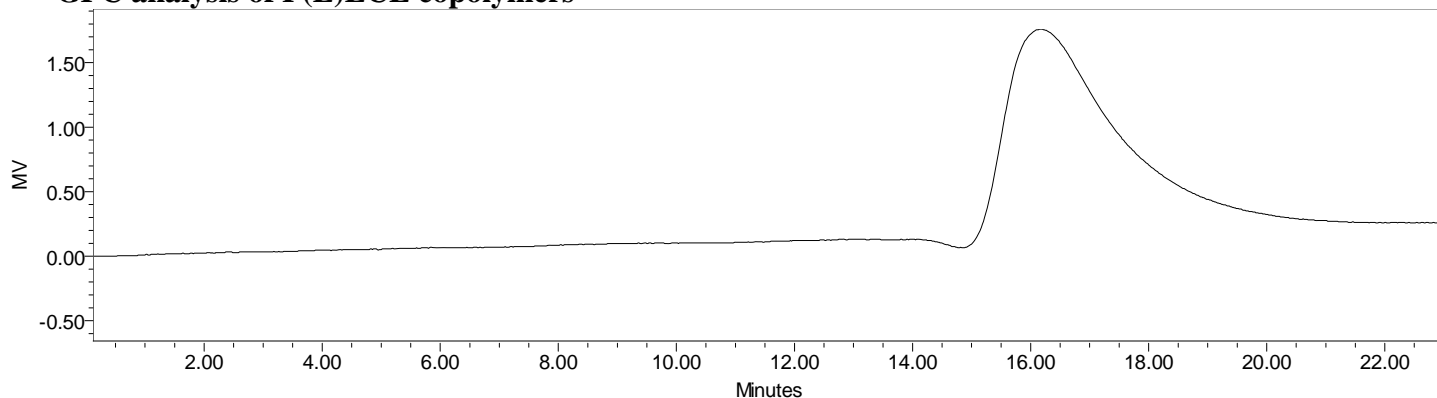
# Certificate of Analysis



Product Name: Poly(L-Lactic-co-caprolactone) copolymer ester endcap (25:75 LA:CL, Mn: 45,000-55,000 Da) (Lot#: 60322BPR-B)



## • GPC analysis of P(L)LCL copolymers



Analysis Method: Waters Breeze 2 system with 1 ml/min DCM flow across three Phenogel 5um columns (Phenomenex). Detection via refractive index, calibrated against polystyrene standards.

Polymer	Mn (from GPC)	Mw (from GPC)	PDI
P(L)LCL	46,227	71,519	1.55

## • Structure of P(L)LCL copolymers

