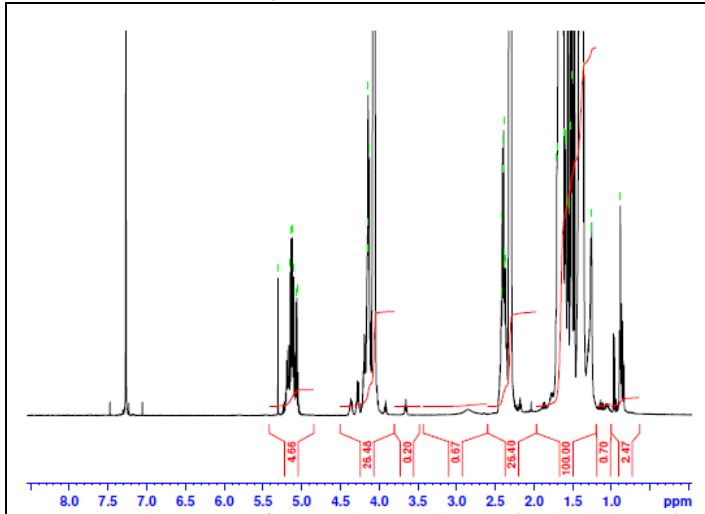


# No. AP170

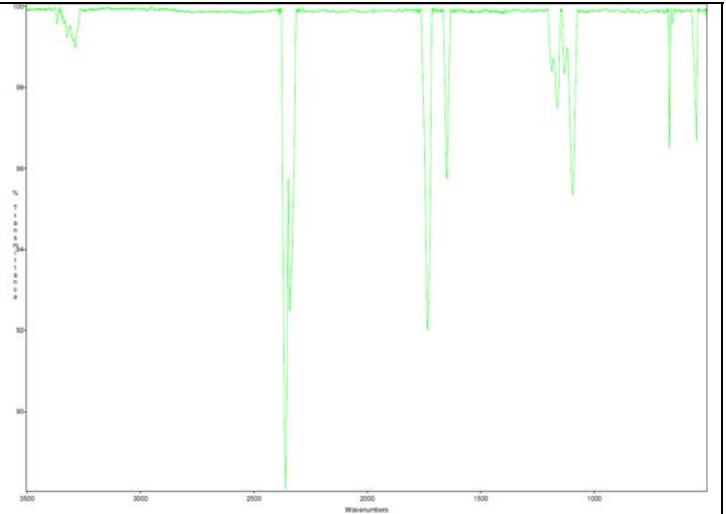
# Certificate of Analysis



Product Name: Poly(L-Lactic-co-caprolactone) copolymer ester endcap (25:75 LA:CL, Mn: 5,000-10,000 Da) (Lot#: 60314ELH-A)

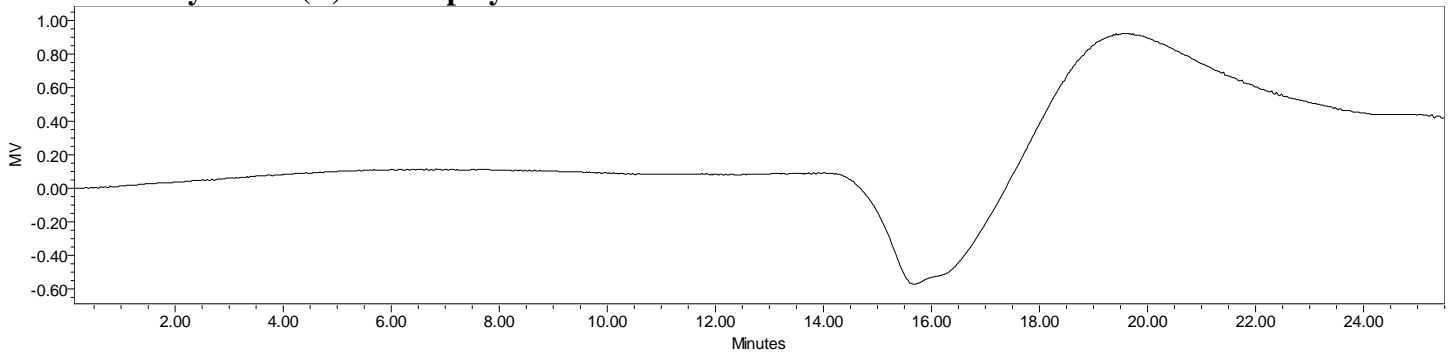


H-NMR Spectrum of P(L)LCL copolymers in CDCl<sub>3</sub> (Varian Inova 500 MHz instrument), NMR of P(L)LCL copolymers: LA/CL = 26%/74% molar ratio (18%/82% w/w)



FTIR Analysis: Collected from cast-film on KBR salt-plate placed in Satellite FTIR (Thermo-Mattson) and analyzed in transmission mode.

## • GPC analysis of P(L)LCL copolymers



Analysis Method: Waters Breeze 2 system with 1 ml/min DCM flow across three Phenogel 5um columns (Phenomenex). Detection via refractive index, calibrated against polystyrene standards.

Polymer	Mn (from GPC)	Mw (from GPC)	PDI
P(L)LCL	6,109	14,429	2.36

## • Structure of P(L)LCL copolymers

