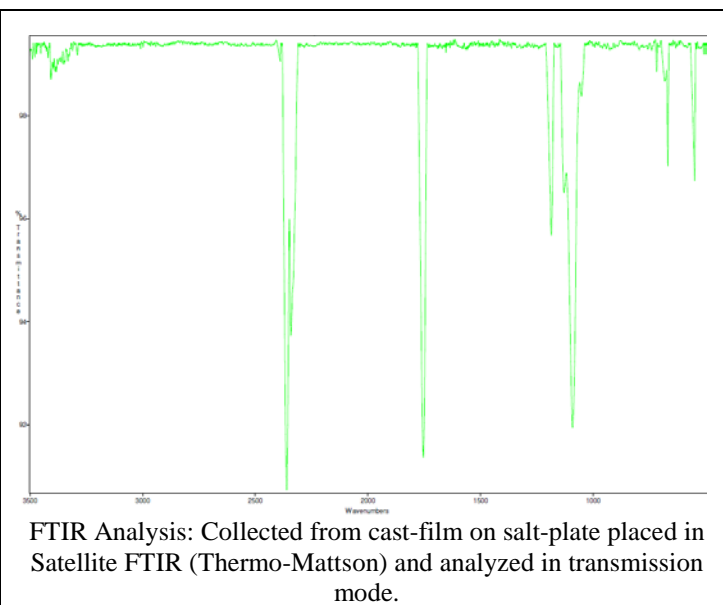
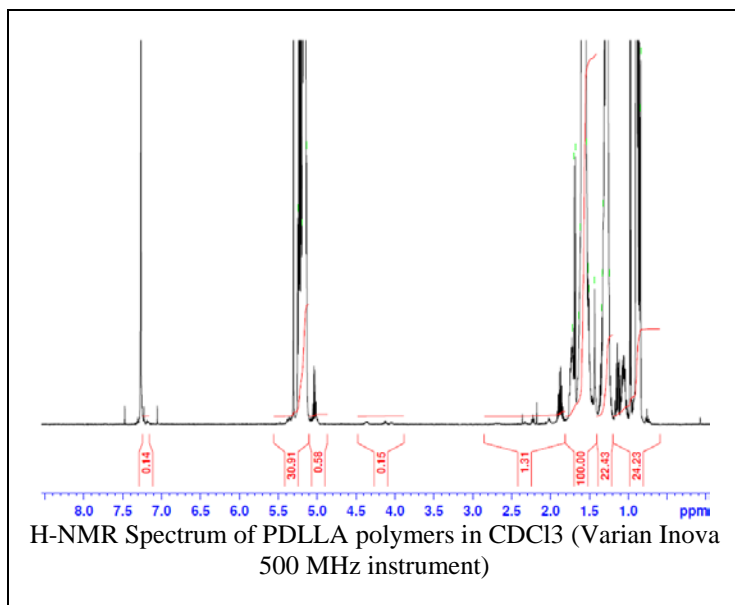
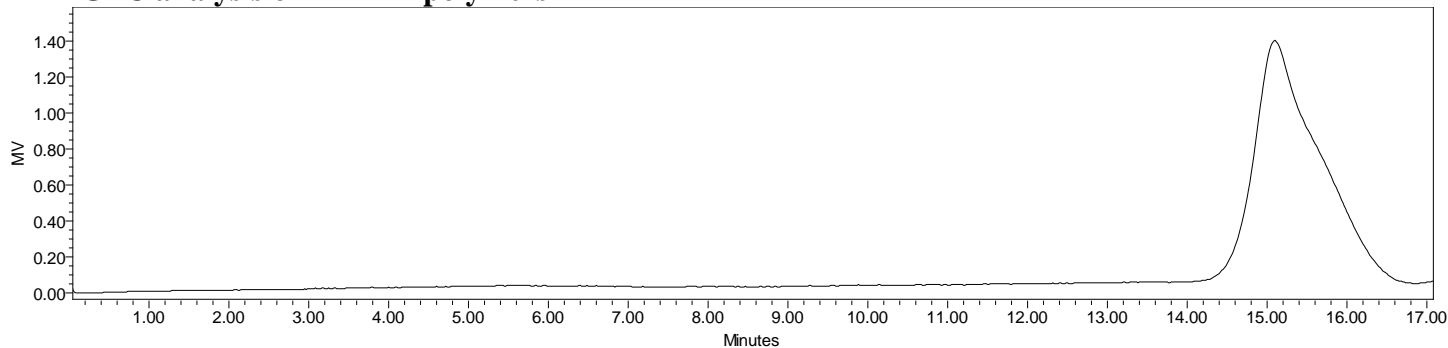


No. AP164 Certificate of Analysis

Product Name: Poly(DL-lactide) ester endcapped (Mn: 100,000-200,000 Da) (Lot#: 60108ELH-A)



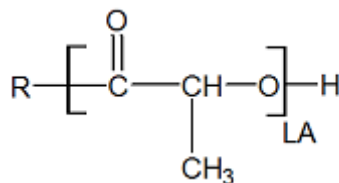
• GPC analysis of PDLLA polymers



Analysis Method: Varian Prostar system with 1 ml/min DCM flow across two Phenogel 5 μ m columns and one PLgel Resipore column (Agilent). Detection via UV/Vis, calibrated against polystyrene standards.

Polymer	Mn (from GPC)	Mw (from GPC)	PDI
PDLLA	170,293	178,224	1.05

• Structure of PDLLA polymers



Material provided for research use only. Not for human use.

PolySciTech Division of Akina, Inc. | 3495 Kent Avenue, West Lafayette, IN 47906

765-464-0390 | www.polysciotech.com

For research use only.