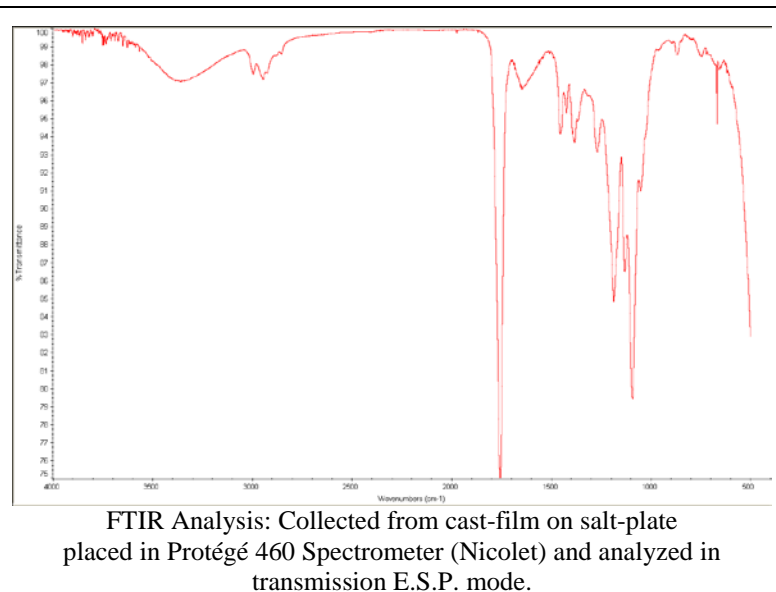
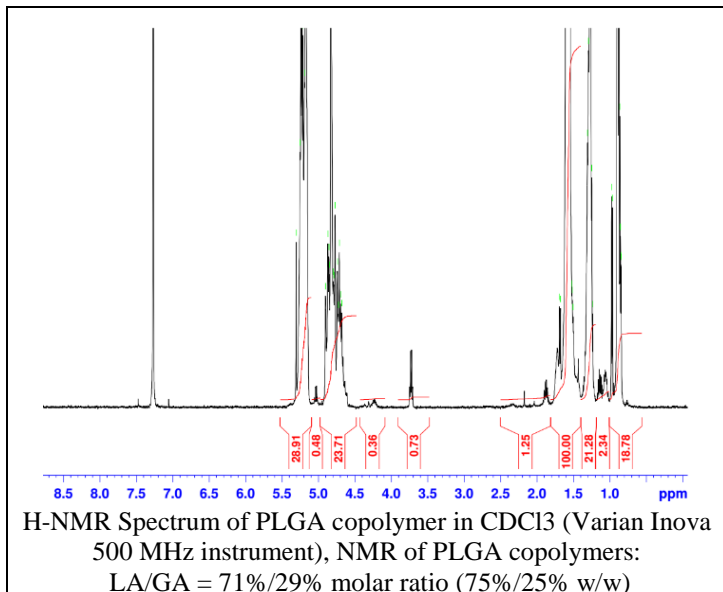


No. AP163

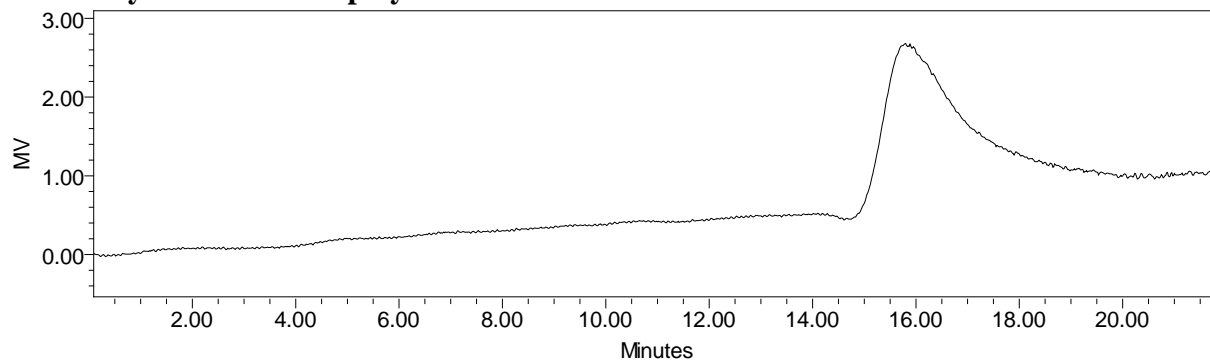
Certificate of Analysis



Product Name: Poly(lactic-co-glycolic acid) Ester endcap (75:25 LA:GA, Mn: 55,000-65,000Da) (Lot#: 61212SMS-B)



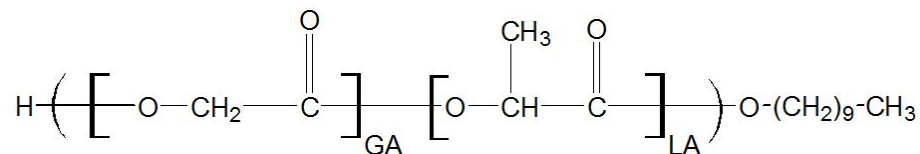
• GPC analysis of PLGA copolymers



Analysis Method: Waters Breeze 2 system with 1 ml/min DCM flow across three GPC columns (Phenomenex). Detection via refractive index, calibrated against polystyrene standards.

Polymer	Mn (from GPC)	Mw (from GPC)	PDI
PLGA	64,508	91,123	1.41

• Structure of PLGA copolymers



Material provided for research use only. Not for human use.

PolySciTech Division of Akina, Inc. | 3495 Kent Avenue, West Lafayette, IN 47906
765-464-0390 | www.polysciotech.com

For research use only.