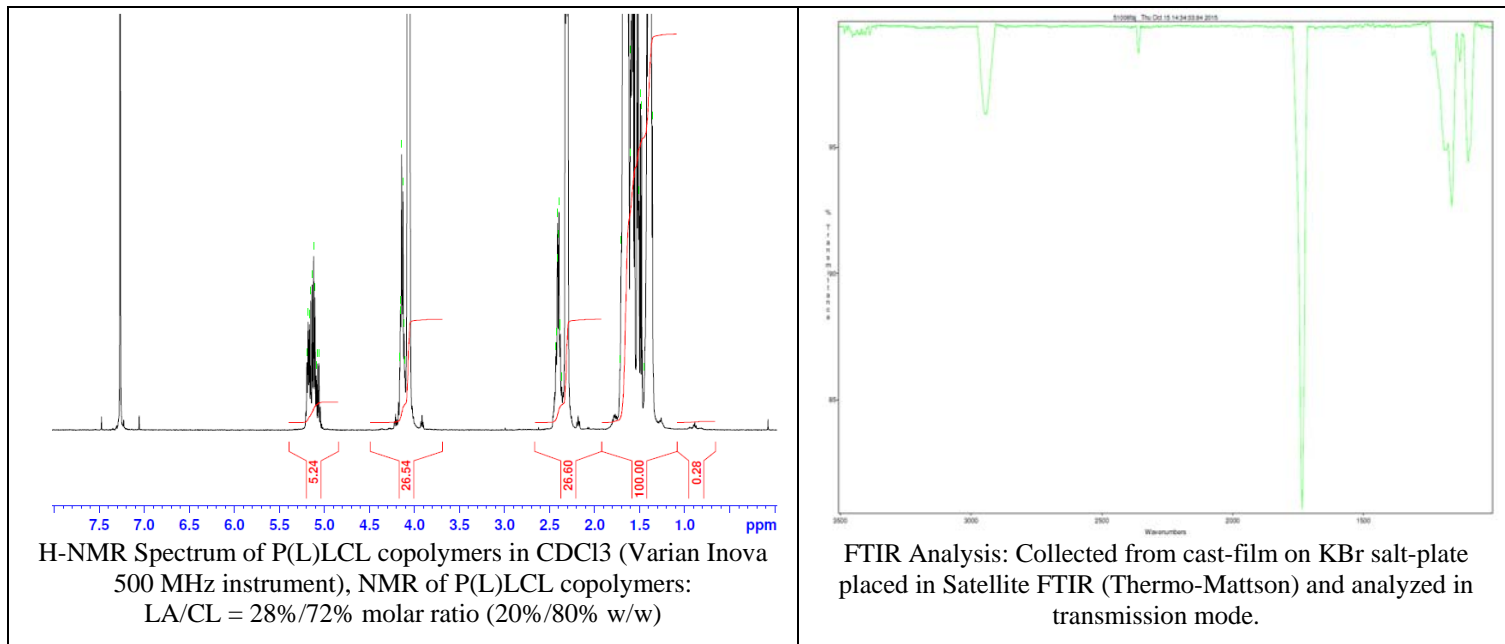


No. AP160

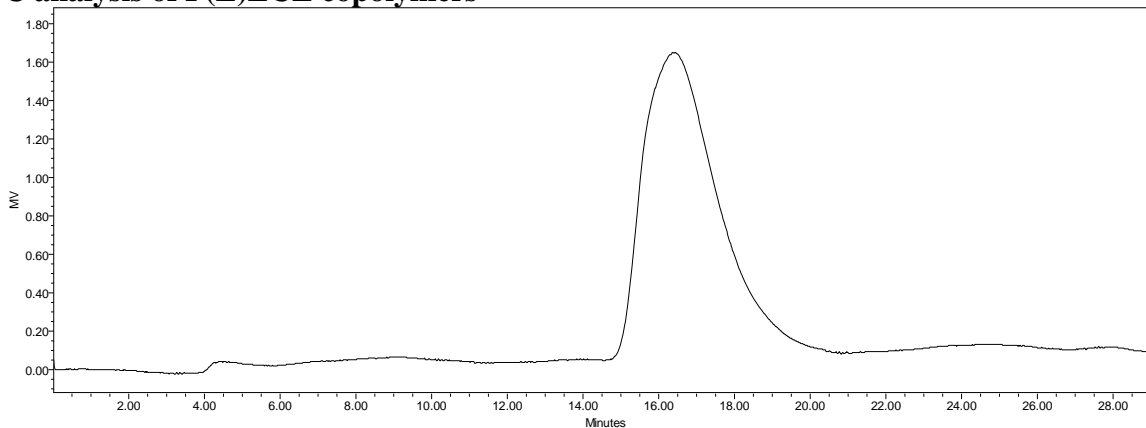
Certificate of Analysis



Product Name: Poly(L-lactide-co-caprolactone) copolymer acid endcap (30:70 LA:CL,
M_n: 100,000-200,000 Da) (Lot#: 51008FAJ)



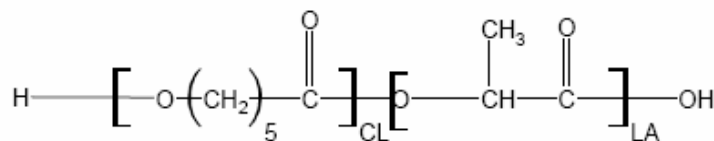
- GPC analysis of P(L)LCL copolymers**



Analysis Method: Waters Breeze 2 system with 1 ml/min DCM flow across three Phenogel 5um columns (Phenomenex). Detection via refractive index, calibrated against polystyrene standards.

Polymer	M _n (from GPC)	M _w (from GPC)	PDI
P(L)LCL	123,206	161,588	1.31

- Structure of P(L)LCL copolymers**



Material provided for research use only. Not for human use.

PolySciTech Division of Akina, Inc. | 3495 Kent Avenue, West Lafayette, IN 47906
765-464-0390 | www.polysciotech.com

For research use only.