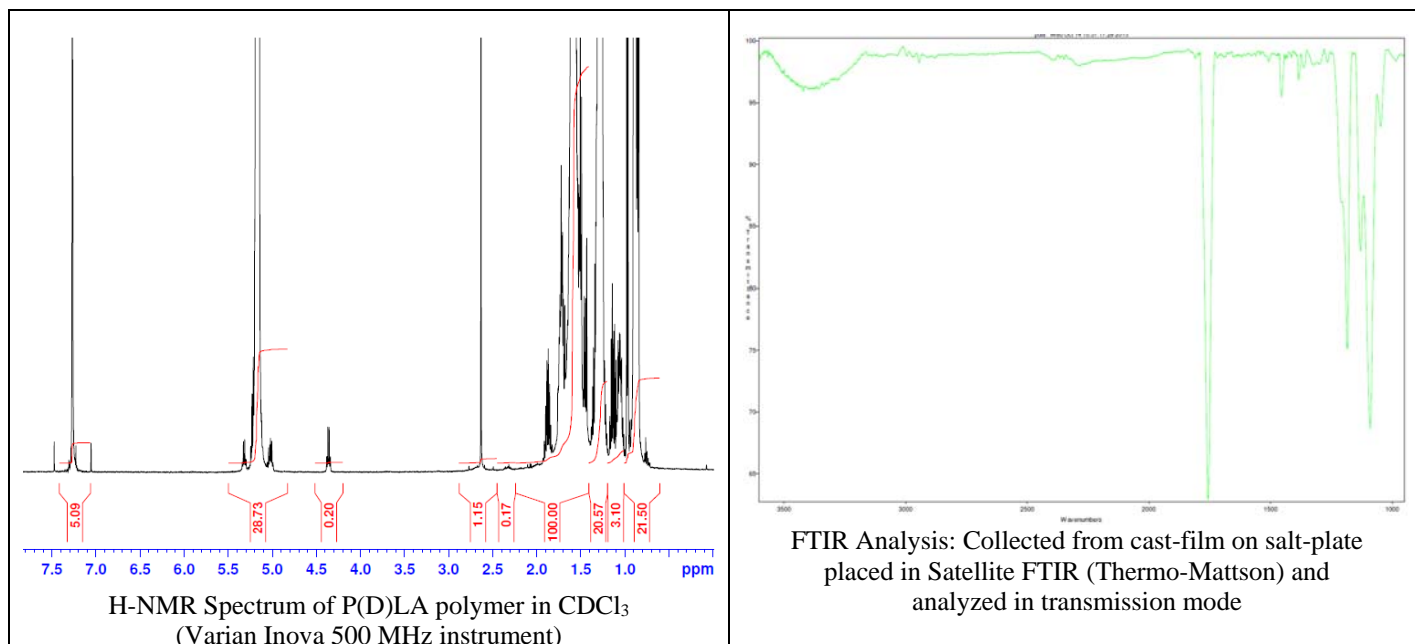


No. AP159

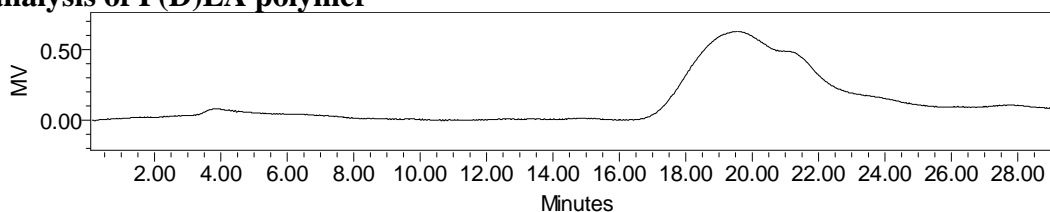
Certificate of Analysis



Product Name: Poly(D-lactide) acid endcap (M_n : 10,000-15,000 Da) (Lot#: 51007FAJ)



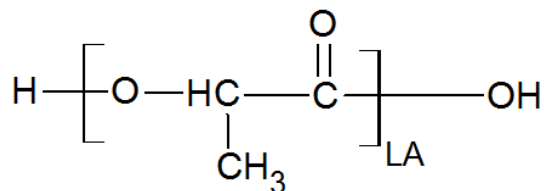
- **GPC analysis of P(D)LA polymer**



Analysis Method: Waters Breeze 2 system with 1 ml/min DCM flow across three Phenogel 5 μ m columns. Detection via RI, calibrated against polystyrene standards.

Polymer	M_n (from GPC)	M_w (from GPC)	PDI
P(D)LA	12621	33291	2.68

- **Structure of P(D)LA polymer**



Material provided for research use only. Not for human use.

PolySciTech Division of Akina, Inc. | 3495 Kent Avenue, West Lafayette, IN 47906
765-464-0390 | www.polysciotech.com

For research use only.