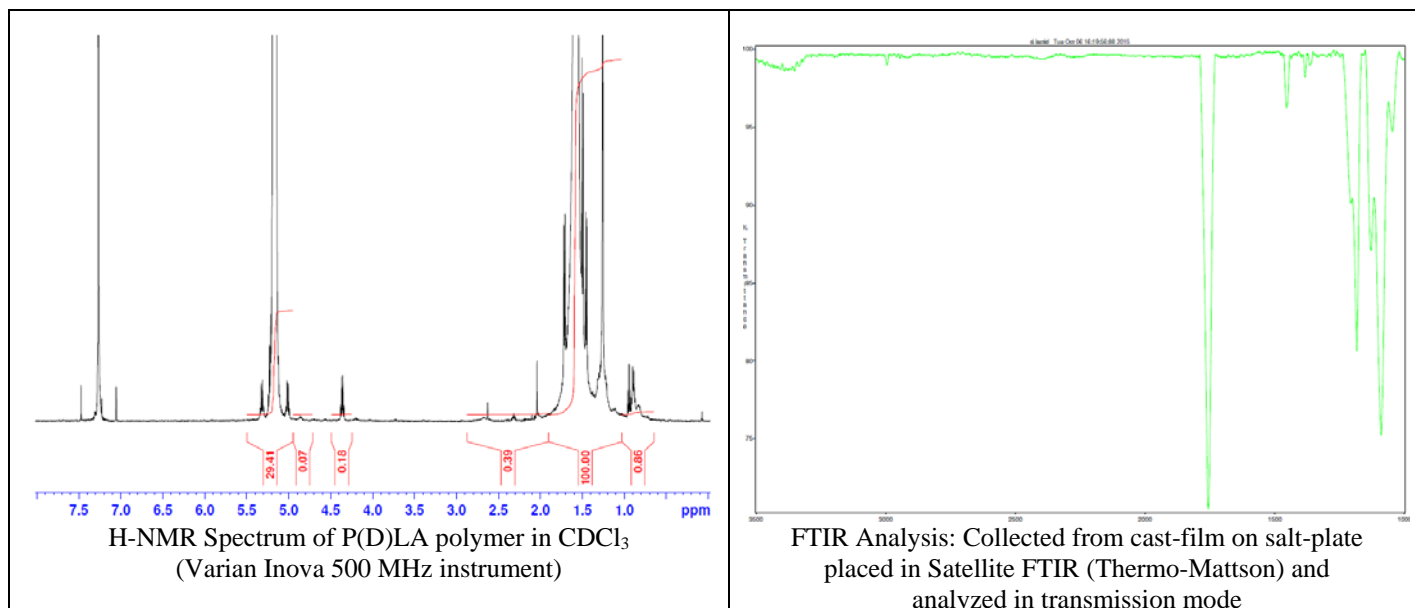
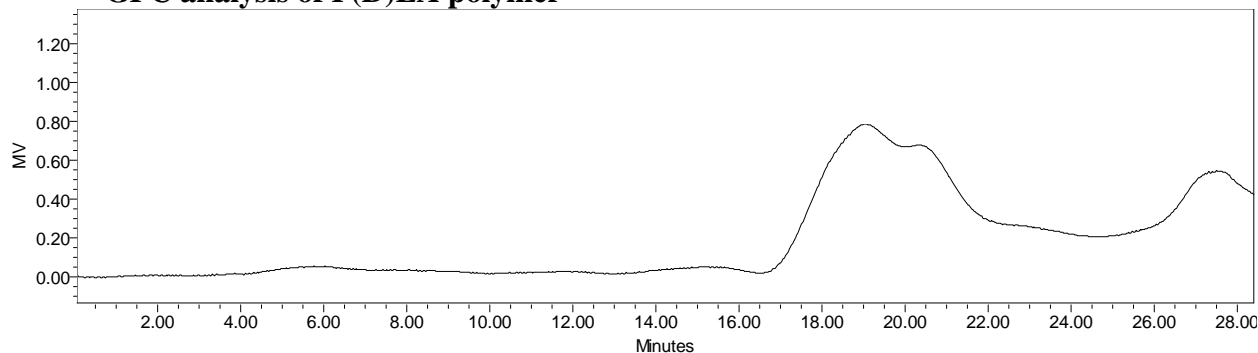


Product Name: Poly(D-lactide) acid endcap (M_n : 20,000-35,000 Da) (Lot#: 50910BPR)



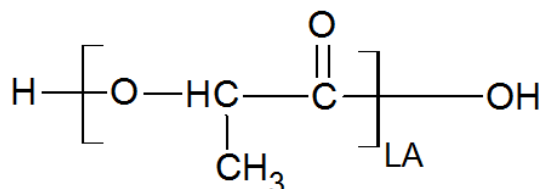
• GPC analysis of P(D)LA polymer



Analysis Method: Waters 2 system with 1 ml/min DCM flow across two Phenogel $5\mu m$ columns and one PLGel Resipore column (Agilent). Detection via UV/Vis, calibrated against polystyrene standards.

Polymer	M_n (from GPC)	M_w (from GPC)	PDI
P(D)LA	25080	42068	1.68

• Structure of P(D)LA polymer



Material provided for research use only. Not for human use.

PolySciTech Division of Akina, Inc. | 3495 Kent Avenue, West Lafayette, IN 47906

765-464-0390 | www.polysciotech.com

For research use only.