

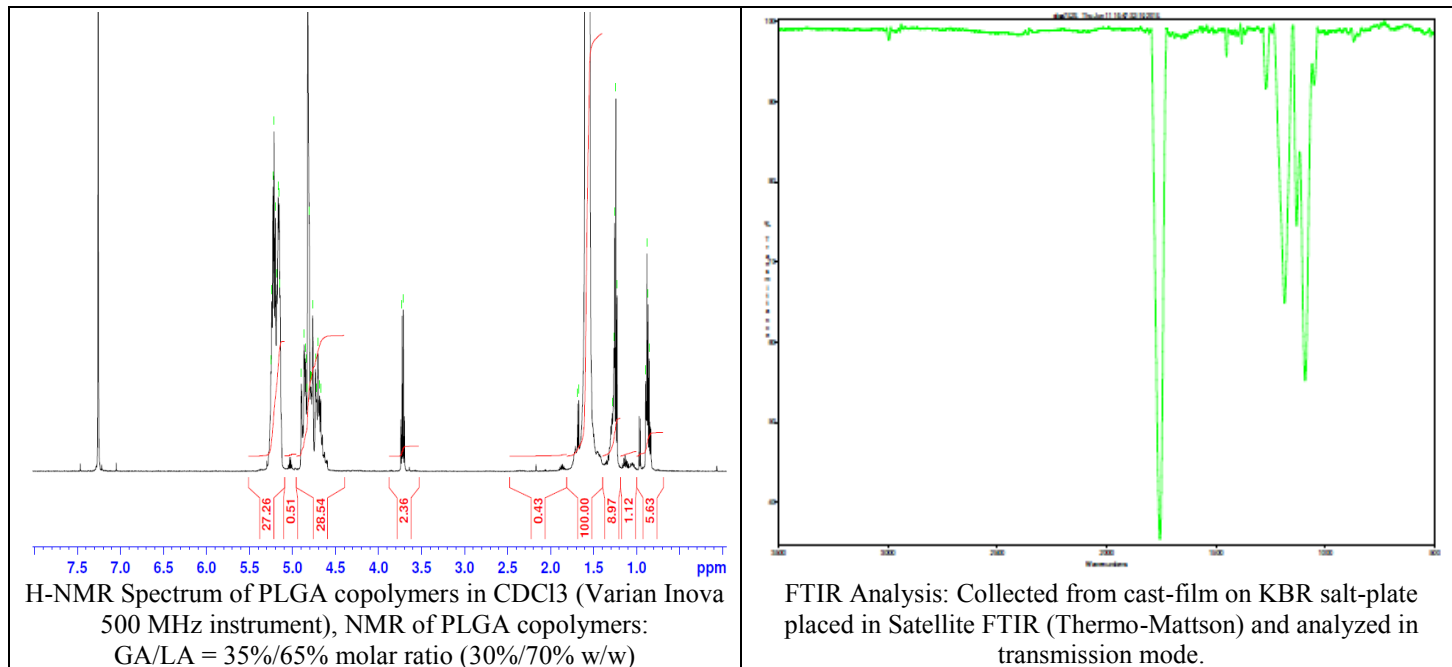
No. AP149

Certificate of Analysis

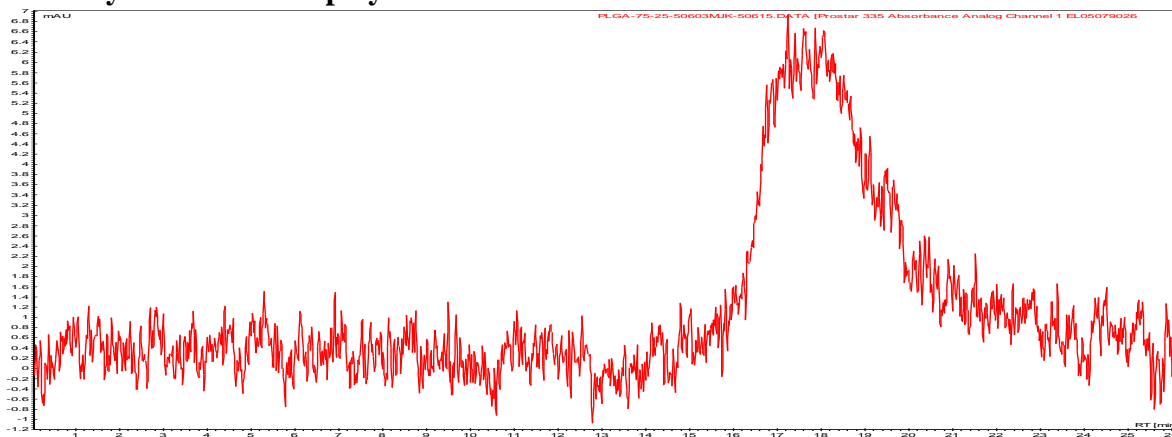


Product Name: Poly(lactic-co-glycolic) Copolymer acid end-capped (60:40 LA:GA,

Mn: 100,000-200,000 Da) (Lot#: 50603MJK) REV:A



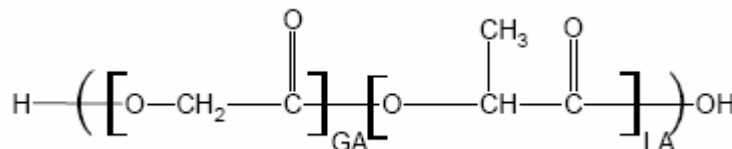
• GPC analysis of PLGA copolymers



Analysis Method: Varian Prostar system with 1 ml/min DCM flow across three Phenogel columns and one PLgel Resipore column (Agilent). Detection via UV/Vis, calibrated against polystyrene standards

| Polymer | Mn (from GPC) | Mw (from GPC) | PDI |
|---------|---------------|---------------|------|
| PLGA | 117,827 | 178,717 | 1.52 |

• Structure of PLGA copolymers



Material provide for research use only. Not for human use.