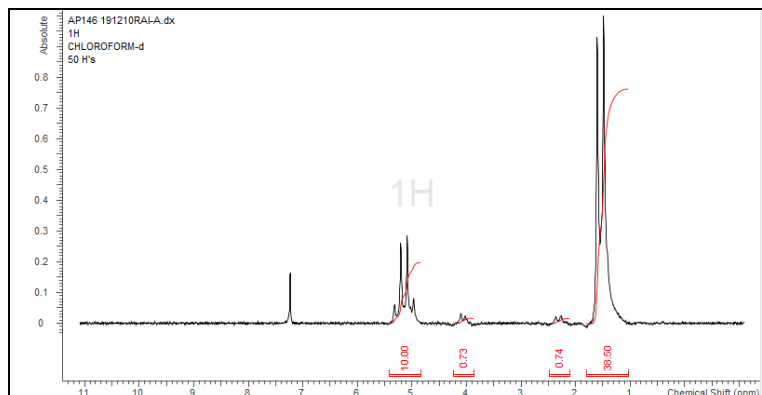


# No. AP146

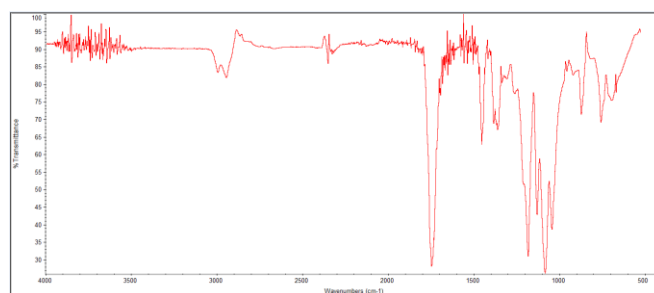
# Certificate of Analysis



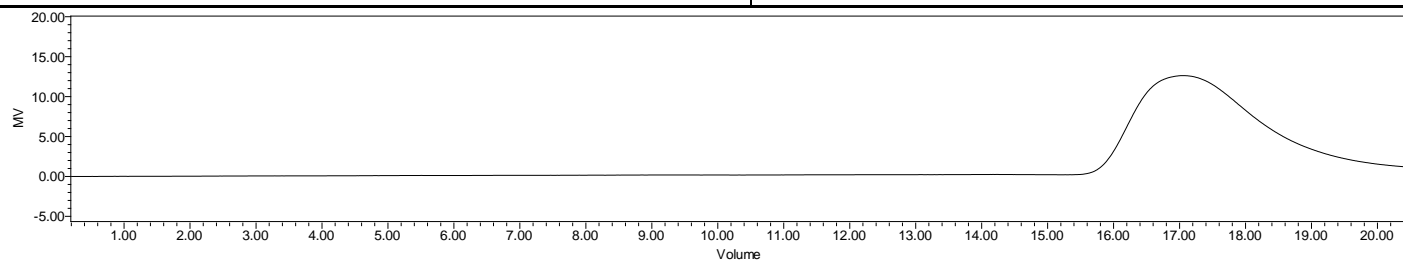
Product Name: Poly(L-Lactic-co-caprolactone) Copolymers acid end-capped  
(80:20 LA:CL,  $M_n$ : 100,000-200,000 Da) (Lot#: 191210RAI-A) (*HISTORICAL RETESTED*)



H-NMR Spectrum of copolymers in CDCl<sub>3</sub> (NMReady-60e, Nanalysis 60 MHz) NMR of PLCL copolymer: LA-CL = 96%-4% molar ratio (LA-CL 95%-5% w-w)



FTIR Analysis: Collected from cast-film on KBr salt-plate placed in a Nicolet Avatar 320 spectrometer and analyzed in transmission mode.



GPC Analysis Method: Waters Breeze 2 system with 1 ml/min THF flow across three GPC columns. Detection via refractive index, calibrated against polystyrene standards.

Polymer	$M_n$ (from GPC)	$M_w$ (from GPC)	PDI
P(L)LCL	151,020	207,942	1.38

- Structure of P(L)LCL copolymers**

