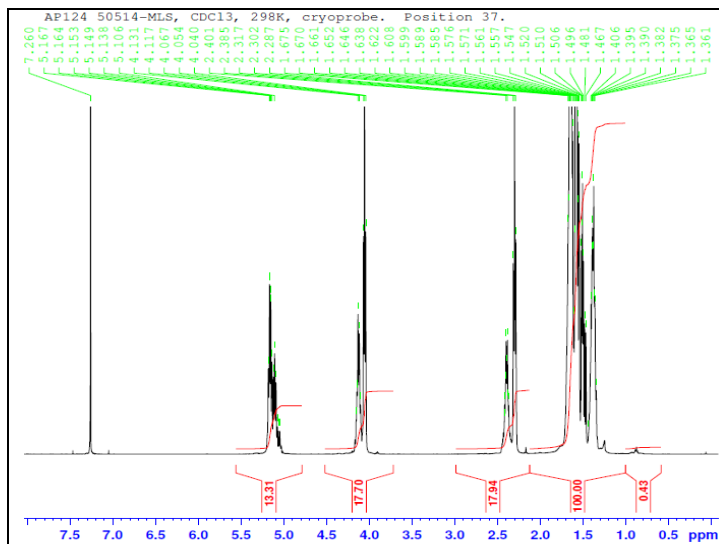


No. AP145

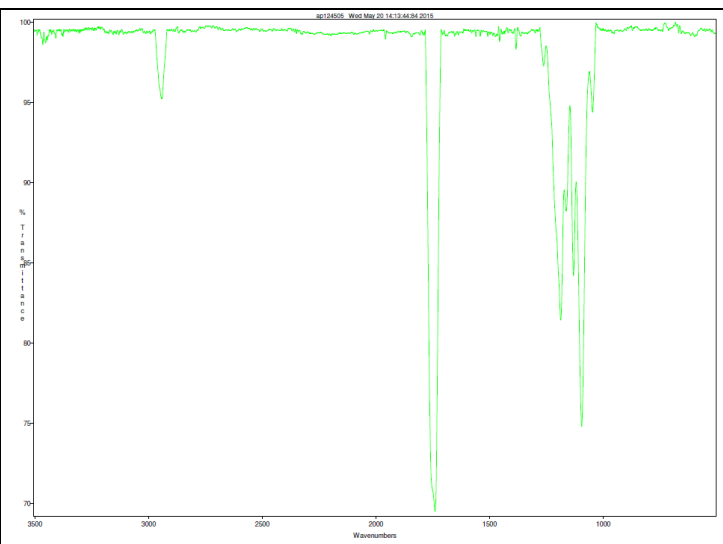
Certificate of Analysis



Product Name: Poly(L-lactide-co-caprolactone) Copolymer ester end-capped (40:60 LA:CL,
Mn: 100,000-200,000 Da) (Lot#: 50514MLS) REV:A

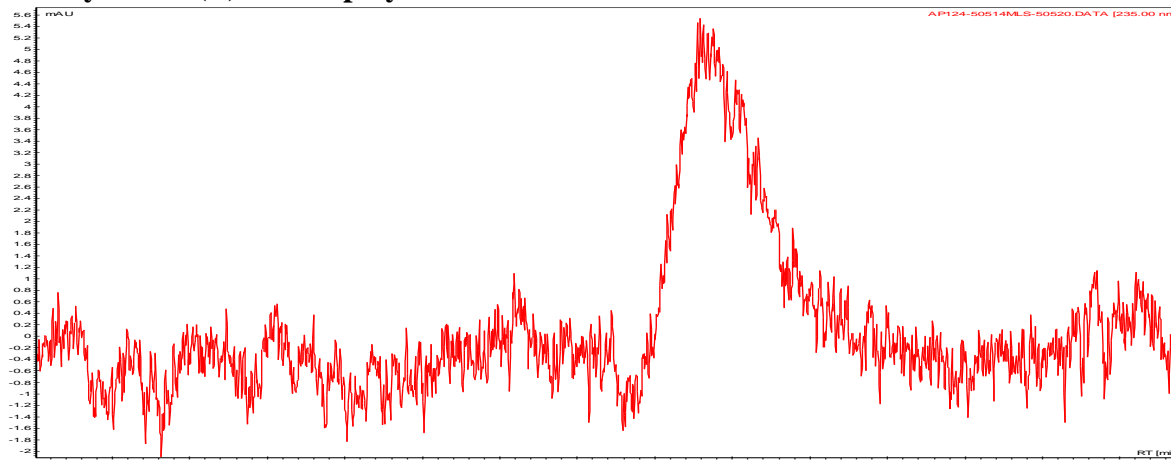


H-NMR Spectrum of P(L)LCL copolymers in CDCl₃ (Varian Inova 500 MHz instrument), NMR of P(L)LCL copolymers:
LA/CL = 44%/56% molar ratio (49%/51% w/w)



FTIR Analysis: Collected from cast-film on KBr salt-plate placed in Satellite FTIR (Thermo-Mattson) and analyzed in transmission mode.

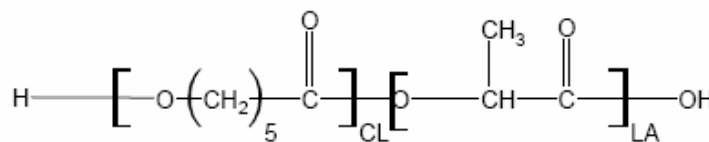
• GPC analysis of P(L)LCL copolymers



Analysis Method: Varian Prostar system with 1 ml/min DCM flow across two Phenogel 5 μ m columns and one PLgel Resipore column (Agilent). Detection via UV/Vis, calibrated against polystyrene standards.

| Polymer | M _n (from GPC) | M _w (from GPC) | PDI |
|---------|---------------------------|---------------------------|------|
| P(L)LCL | 116,118 | 179,377 | 1.54 |

• Structure of P(L)LCL copolymers



Material provided for research use only. Not for human use.

PolySciTech Division of Akina, Inc. | 3495 Kent Avenue, West Lafayette, IN 47906

765-464-0390 | www.polysciotech.com

For research use only.