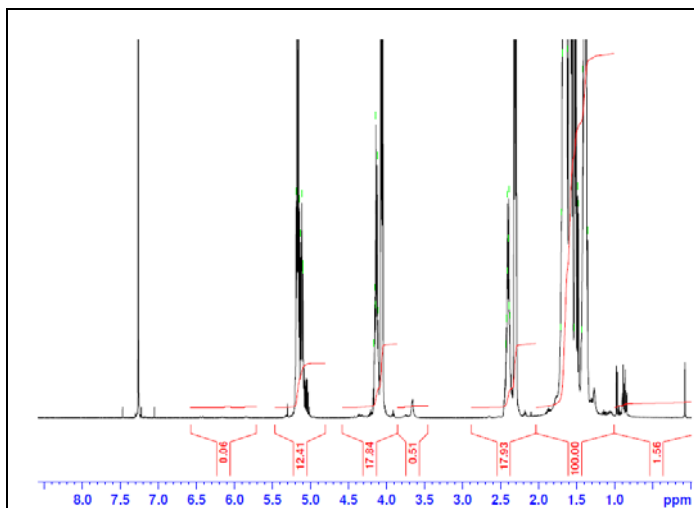


No. AP144

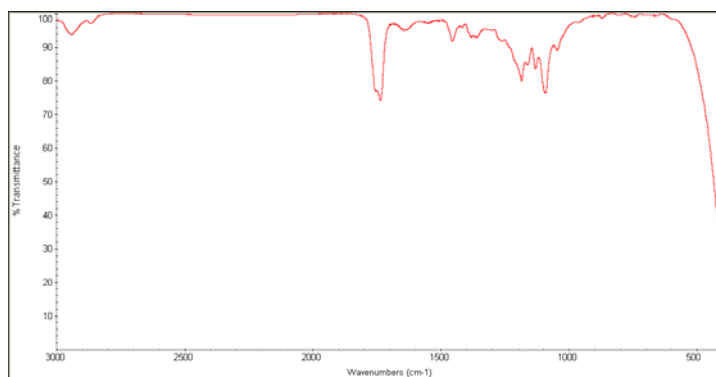
Certificate of Analysis



Product Name: Poly(L-lactide-co-caprolactone) copolymer ester end-capped (60:40 LA:CL, M_n : 100,000-200,000 Da) (Lot#: 60907ELH-C)

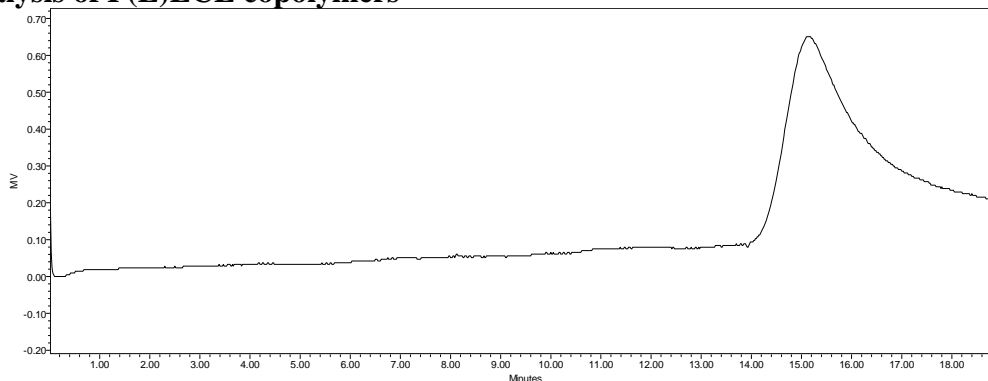


H-NMR Spectrum of P(L)LCL copolymers in CDCl₃ (Varian Inova 500 MHz instrument), NMR of P(L)LCL copolymers: LA/CL = 58%/42% molar ratio (47%/53% w/w)



FTIR Analysis: Collected from cast-film on KBr salt-plate placed in Protégé 460 spectrometer and analyzed in transmission E.S.P. mode.

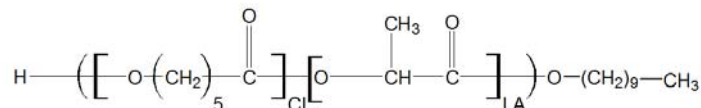
- **GPC analysis of P(L)LCL copolymers**



Analysis Method: Waters Breeze 2 system with 1 ml/min DCM flow across three GPC columns (7.6 x 300 mm, mixed porosities). Detection via refractive index, calibrated against polystyrene standards.

Polymer	M_n (from GPC)	M_w (from GPC)	PDI
P(L)LCL	100,738	115,680	1.11

- **Structure of P(L)LCL copolymers**



Material provided for research use only. Not for human use.