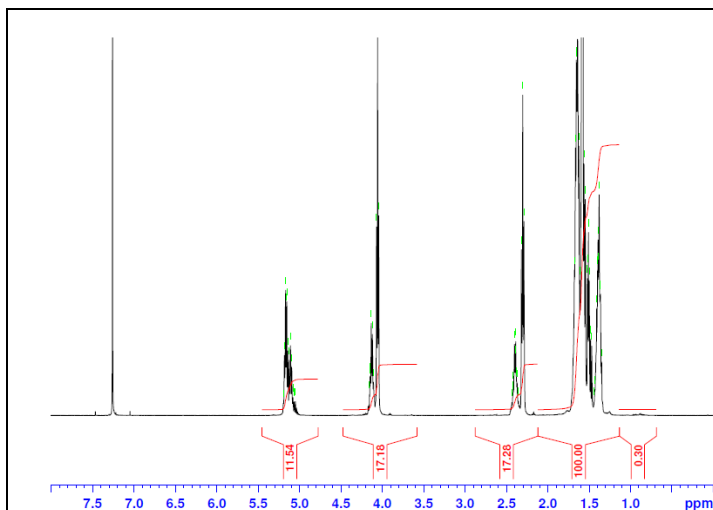


# No. AP144

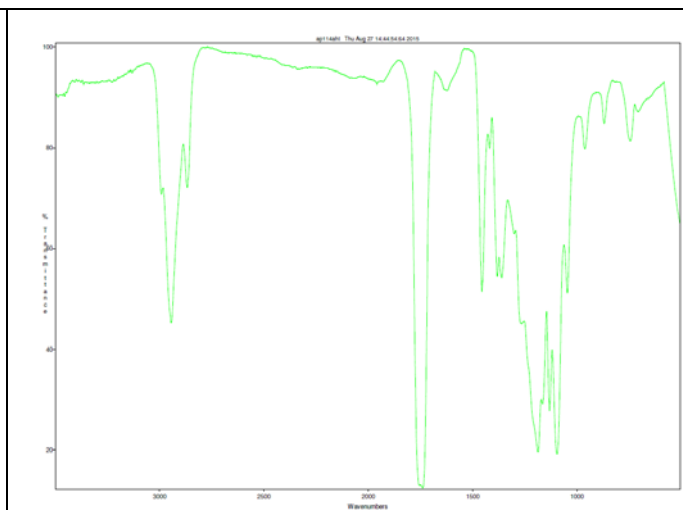
# Certificate of Analysis



Product Name: Poly(L-lactide-co-caprolactone) Copolymer ester end-capped (60:40 LA:CL,  $M_n$ : 100,000-200,000 Da) (Lot#: 50814AHT)

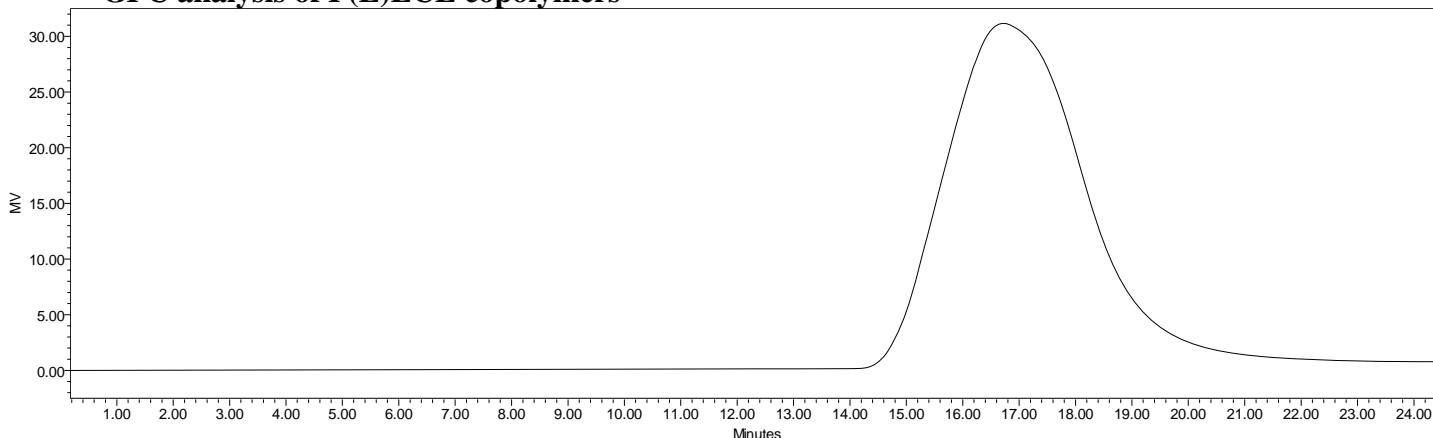


H-NMR Spectrum of P(L)LCL copolymers in  $CDCl_3$  (Varian Inova 500 MHz instrument), NMR of P(L)LCL copolymers: LA/CL = 57%/43% molar ratio (46%/55% w/w)



FTIR Analysis: Collected from cast-film on salt-plate placed in Satellite FTIR (Thermo-Mattson) and analyzed in transmission mode.

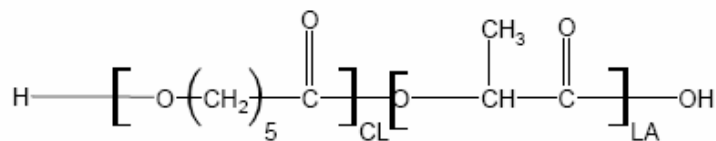
## • GPC analysis of P(L)LCL copolymers



Analysis Method: Varian Prostar system with 1 ml/min DCM flow across two Phenogel 5  $\mu m$  columns and one PLgel Resipore column (Agilent). Detection via UV/Vis, calibrated against polystyrene standards.

Polymer	$M_n$ (from GPC)	$M_w$ (from GPC)	PDI
P(L)LCL	100,236	124,375	1.24

## • Structure of P(L)LCL copolymers



Material provided for research use only. Not for human use.

PolySciTech Division of Akina, Inc. | 3495 Kent Avenue, West Lafayette, IN 47906  
765-464-0390 | www.polysciotech.com

For research use only.