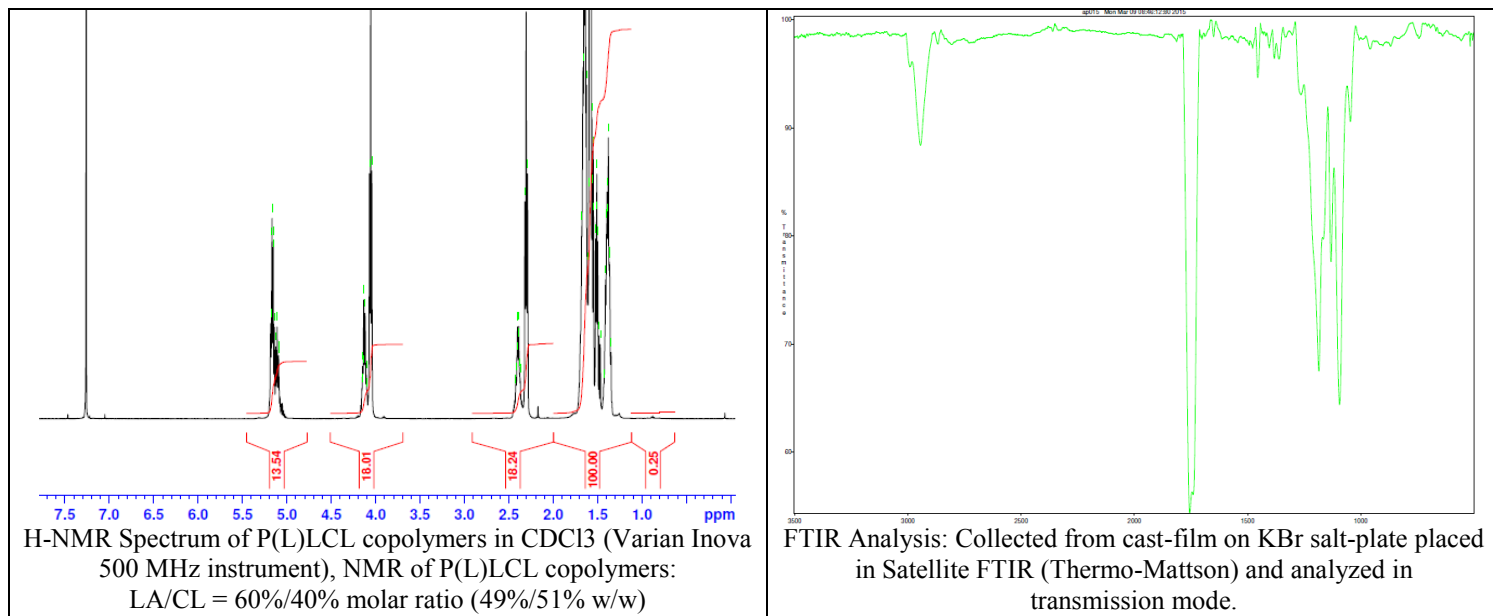


No. AP144

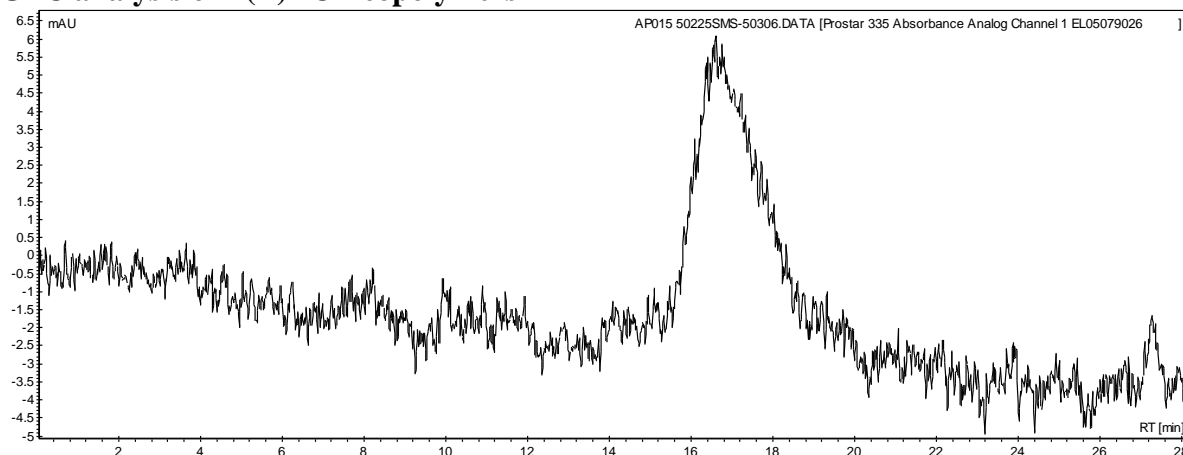
Certificate of Analysis



Product Name: Poly(L-lactide-co-caprolactone) Copolymer ester end-capped (60:40 LA:CL,
Mn: 100,000-200,000 Da) (Lot#: 50225SMS) REV:A



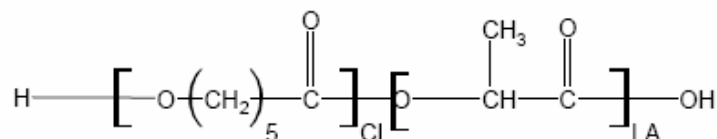
• GPC analysis of P(L)LCL copolymers



Analysis Method: Varian Prostar system with 1 ml/min DCM flow across two Phenogel 5 μ m columns and one PLgel Resipore column (Agilent). Detection via UV/Vis, calibrated against polystyrene standards.

Polymer	M _n (from GPC)	M _w (from GPC)	PDI
P(L)LCL	165,141	252,855	1.53

• Structure of P(L)LCL copolymers



Material provided for research use only. Not for human use.