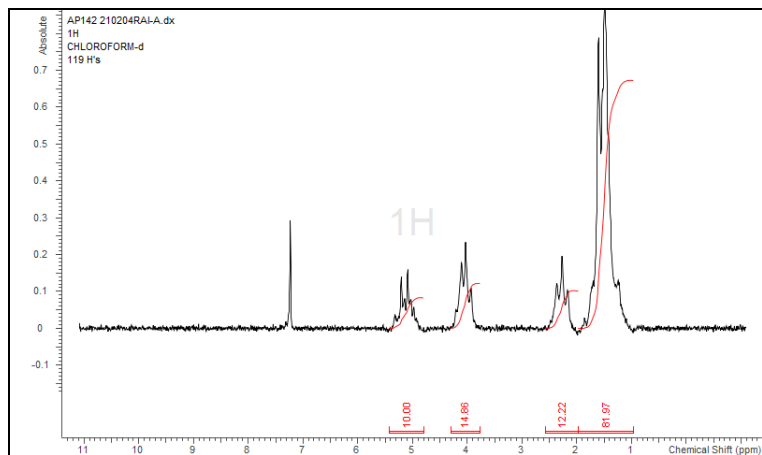


No. AP142

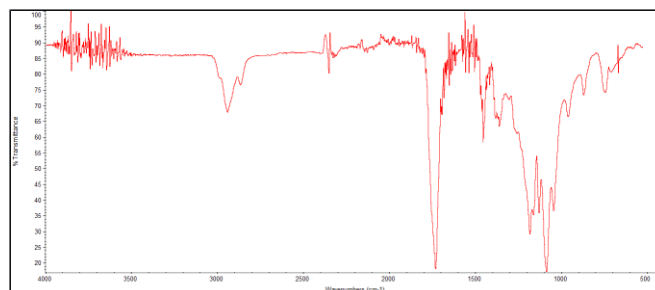
Certificate of Analysis



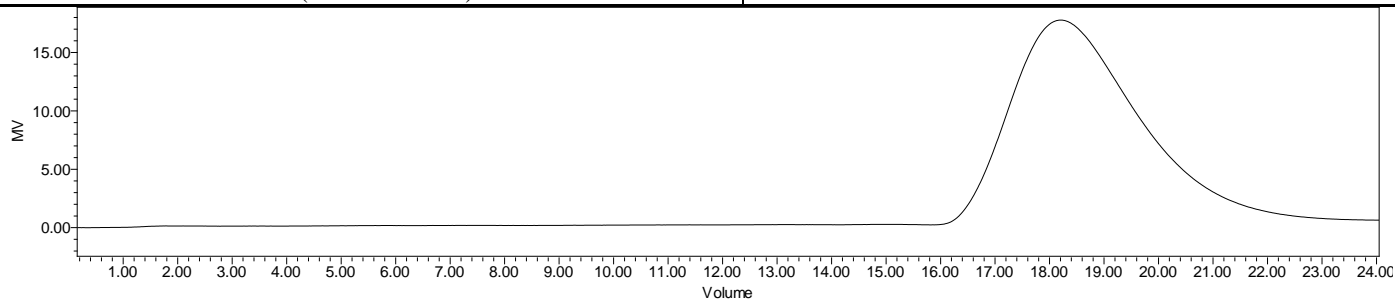
Product Name: Poly(L-Lactic-co-caprolactone) Copolymer (60:40 LA:CL,
Mn: 45,000-55,000 Da) (Lot#: 210204RAI-A)



H-NMR Spectrum of copolymers in CDCl₃ (NMReady 60e, Nanalysis) NMR of P(L)LCL Copolymer: LA:CL = 57%:43% molar ratio (46%:54% w:w)



FTIR Analysis: Collected from Nicolet Avatar 380 spectrometer with ATR Smart Orbit and analyzed in transmission mode.



GPC-ES Analysis Method: Waters Breeze 2 system with 1 ml/min THF flow across three GPC columns. Detection via refractive index, calibrated against polystyrene standards.

Polymer	M _n (from GPC)	M _w (from GPC)	PDI
P(L)LCL copolymers	52,354	84,599	1.62

- Structure of P(L)LCL copolymers

