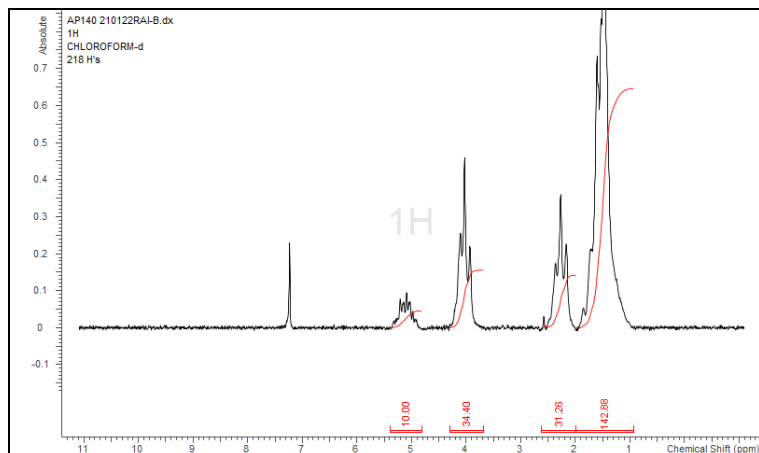


# No. AP140

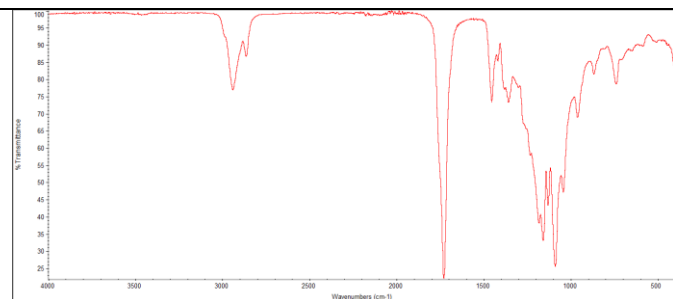
# Certificate of Analysis



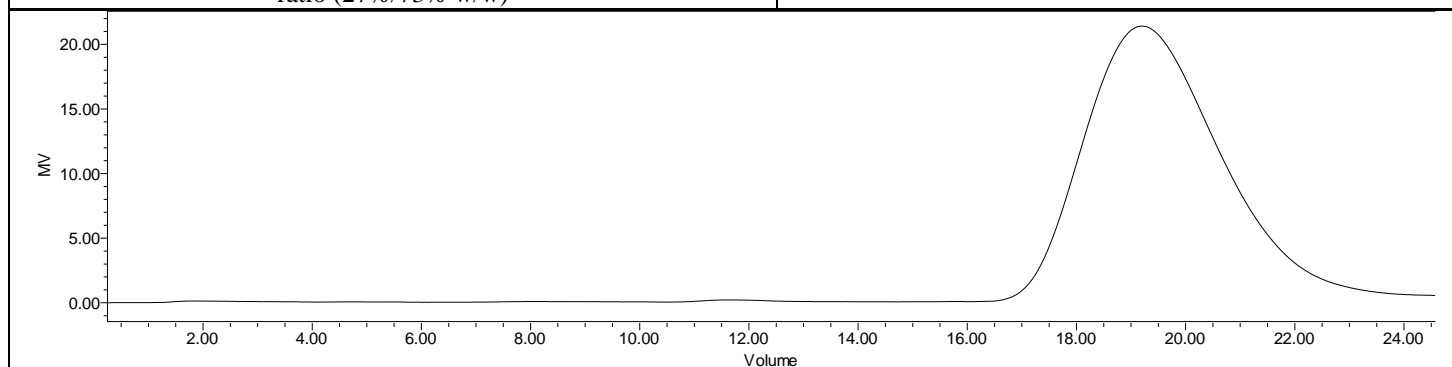
Product Name: Poly(L-Lactide-co-caprolactone) Copolymer acid end-capped  
(40:60 LA:CL, Mn: 35,000-45,000 Da) (Lot#: 210122RAI-A)



H-NMR Spectrum of copolymers in CDCl<sub>3</sub> (NMReady-60E, Nanalysis) NMR of P(L)LCL Copolymer: LA/CL = 37%/63% molar ratio (27%/73% w/w)



FTIR Analysis: Collected from cast-film on KBr salt-plate placed in a Nicolet Avatar 380 spectrometer with ATR Smart Orbit and analyzed in transmission mode.



GPC-ES Analysis Method: Waters Breeze 2 system with 1 ml/min THF flow across three GPC columns. Detection via refractive index, calibrated against polystyrene standards.

Polymer	M <sub>n</sub> (from GPC)	M <sub>w</sub> (from GPC)	PDI
P(L)LCL	36,585	51,963	1.42

- Structure of P(L)LCL copolymers

