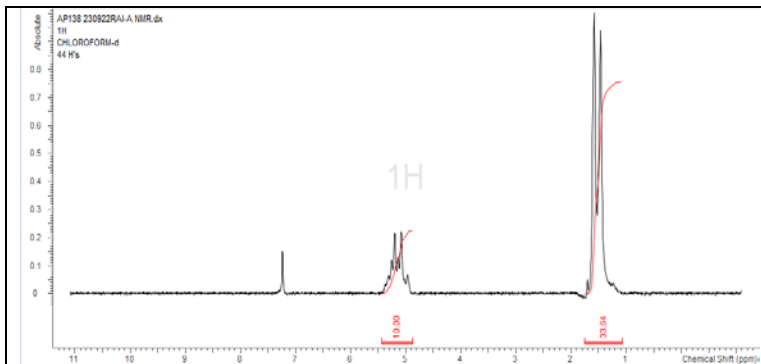


No. AP138

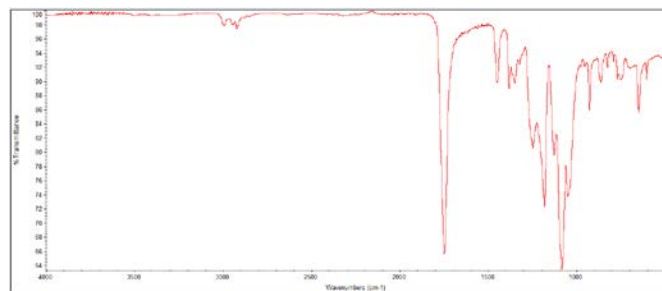
Certificate of Analysis



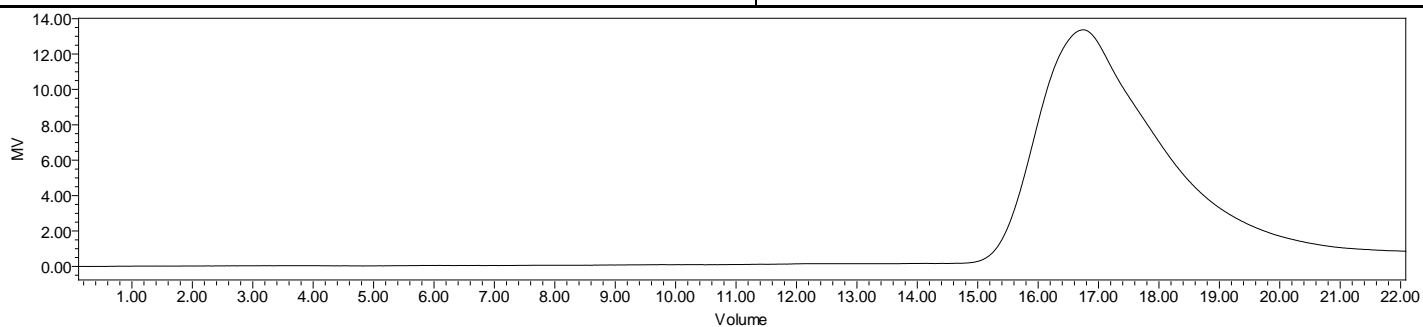
Product Name: Poly(D,L-lactide) acid end cap (Mn 100,000-200,000 Da)
(Lot#: 230922RAI-A)



H-NMR Spectrum of copolymers in CDCl₃ (NMReady-60e, Nanalysis 60 MHz) NMR of PDLLA Copolymer



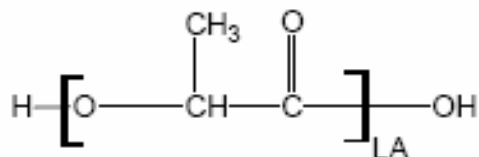
FTIR Analysis: Collected from IS5 ID7-ATR spectrometer (ThermoFisher) and analyzed in transmission mode.



GPC-ES Analysis Method: Waters Breeze 2 system with 1 ml/min THF flow across three GPC columns. Detection via refractive index, calibrated against polystyrene standards.

Polymer	M _n (from GPC)	M _w (from GPC)	PDI
PDLLA	138,451	266,089	1.92

- Structure of PDLLA copolymers**



Approved By:
Amie Tyler
Quality Manager