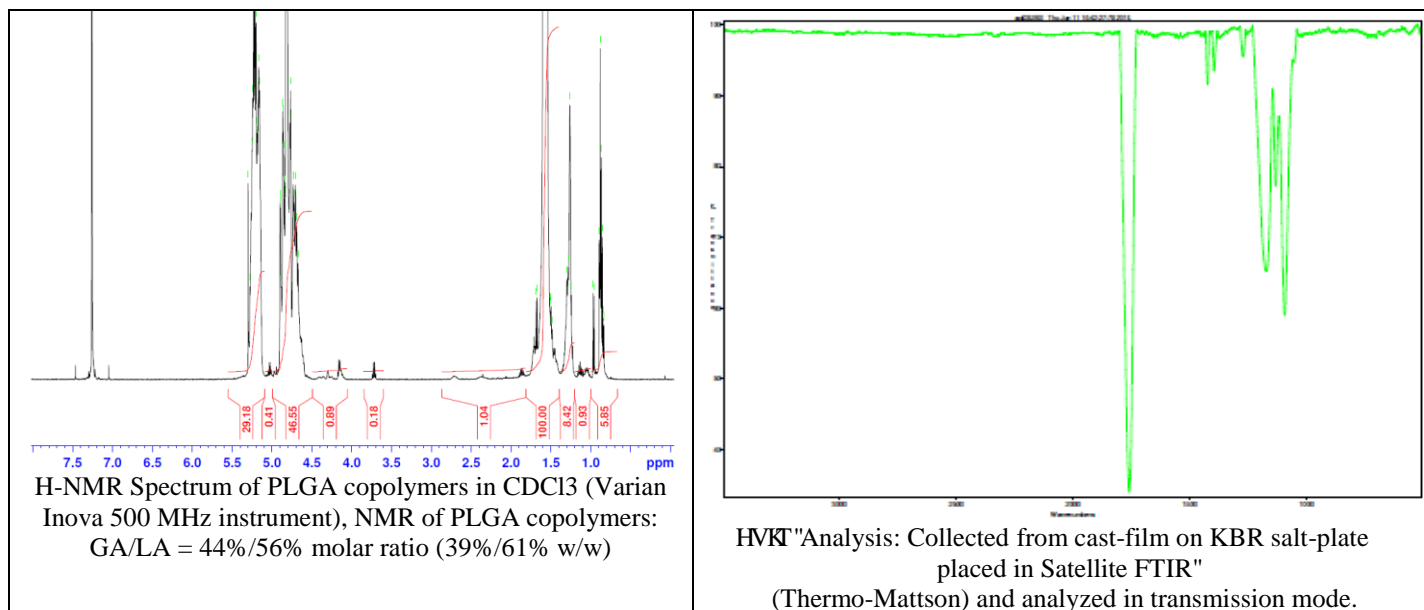
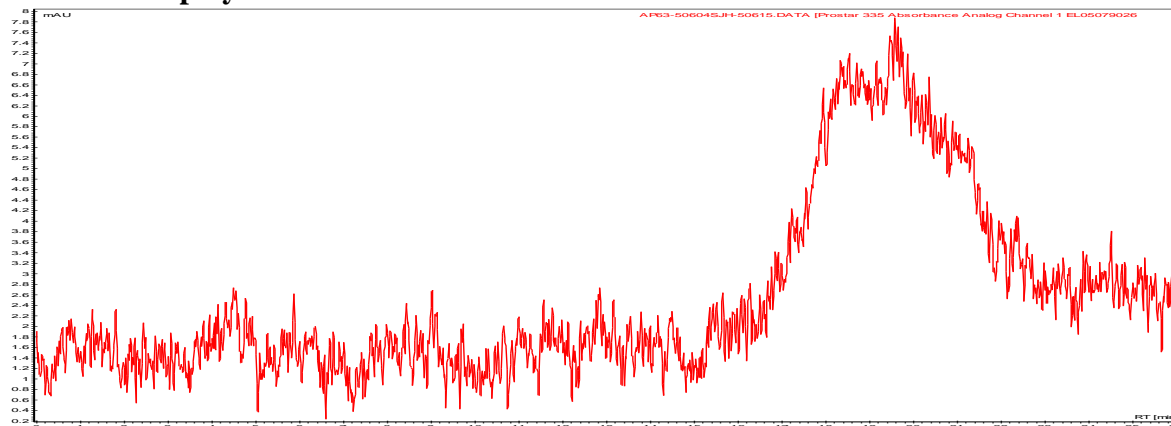


Product Name: Poly(lactic-co-glycolic acid) ester endcapped (60:40 LA:GA, Mn: 35,000-45,000Da) (Lot#: 50604SJH) REV:A



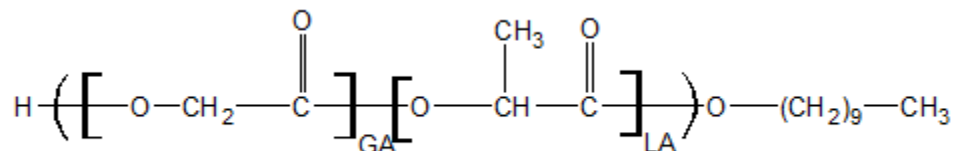
GPC analysis of PLGA copolymers



Analysis Method: Varian Prostar system with 1 ml/min DCM flow across four Phenogel 5u columns (Agilent). Detection via UV/Vis, calibrated against polystyrene standards

Polymer	Mn (from GPC)	Mw (from GPC)	PDI
PLGA	35,102	68,654	1.96

Structure of PLGA copolymers



Material provide for research use only. Not for human use.