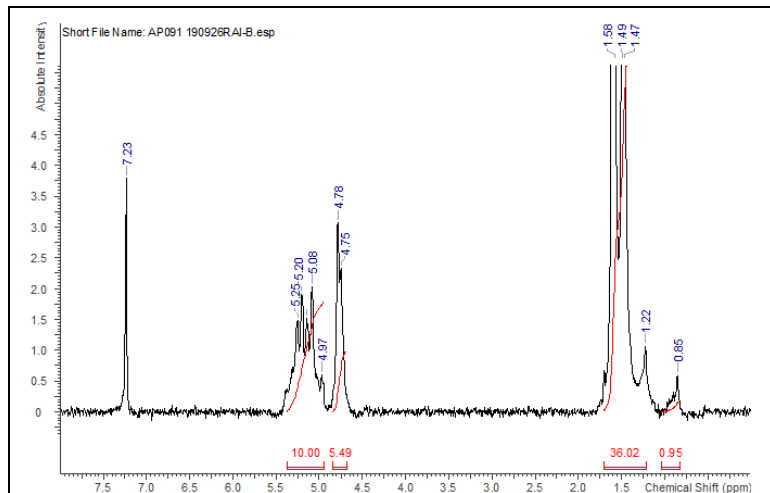
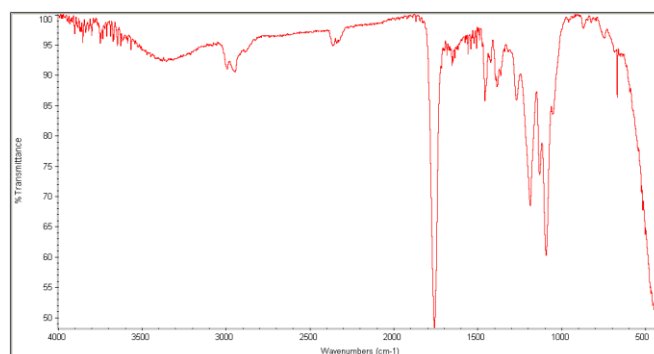


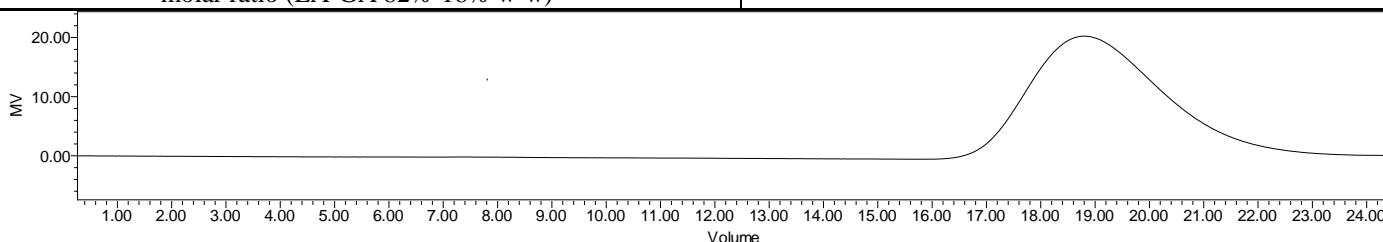
Product Name: Poly(lactide-co-glycolide) copolymers acid endcap  
(75:25 LA:GA, Mn: 25,000-35,000 Da) (Lot#: 190926RAI-A)



H-NMR Spectrum of copolymers in CDCl<sub>3</sub> (NMReady-60e, Nanalysis 60 MHz) NMR of PLGA copolymer: LA-GA = 78%-22% molar ratio (LA-GA 82%-18% w-w)



FTIR Analysis: Collected from cast-film on KBr salt-plate placed in a Nicolet Avatar 320 spectrometer and analyzed in transmission mode.



GPC Analysis Method: Waters Breeze 2 system with 1 ml/min THF flow across three GPC columns. Detection via refractive index, calibrated against polystyrene standards.

Polymer	M <sub>n</sub> (from GPC)	M <sub>w</sub> (from GPC)	PDI
PLGA	30,927	55,205	1.79

- Structure of PLGA copolymers**

